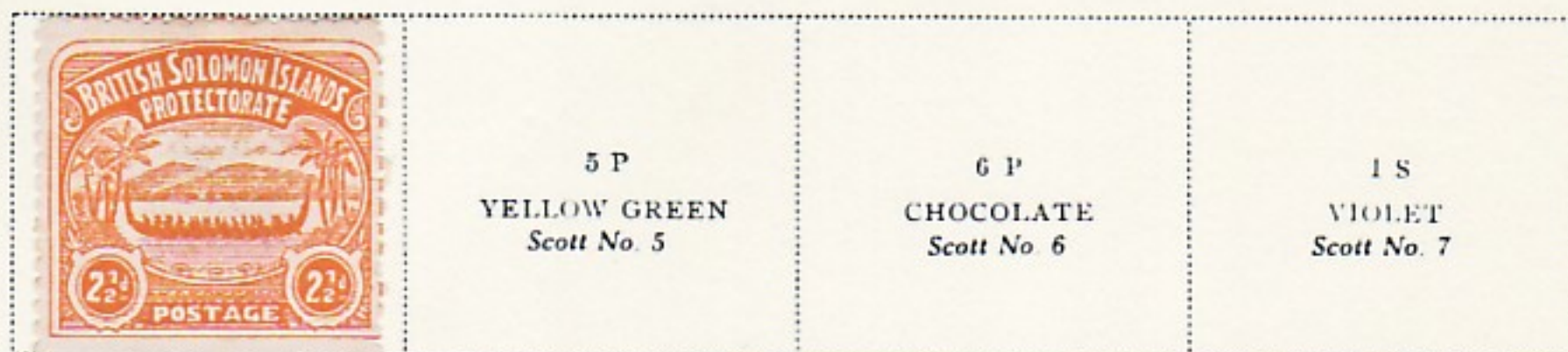


# TIMBRES DES ILES SALOMON



# BRITISH SOLOMON ISLANDS

Unwatermarked  
1907



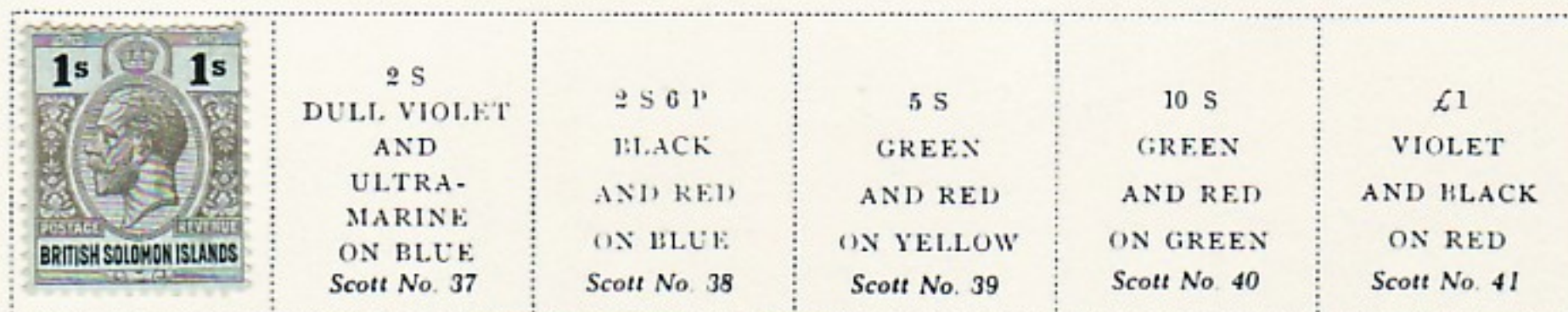
Watermarked Multiple Crown and C. A.  
1908-11



1913



1914





# BRITISH SOLOMON ISLANDS

Watermarked Multiple Crown and C. A.

1922-23

Type of 1914  
Inscribed  
"Postage Revenue"

3 P  
VIOLET  
ON YELLOW

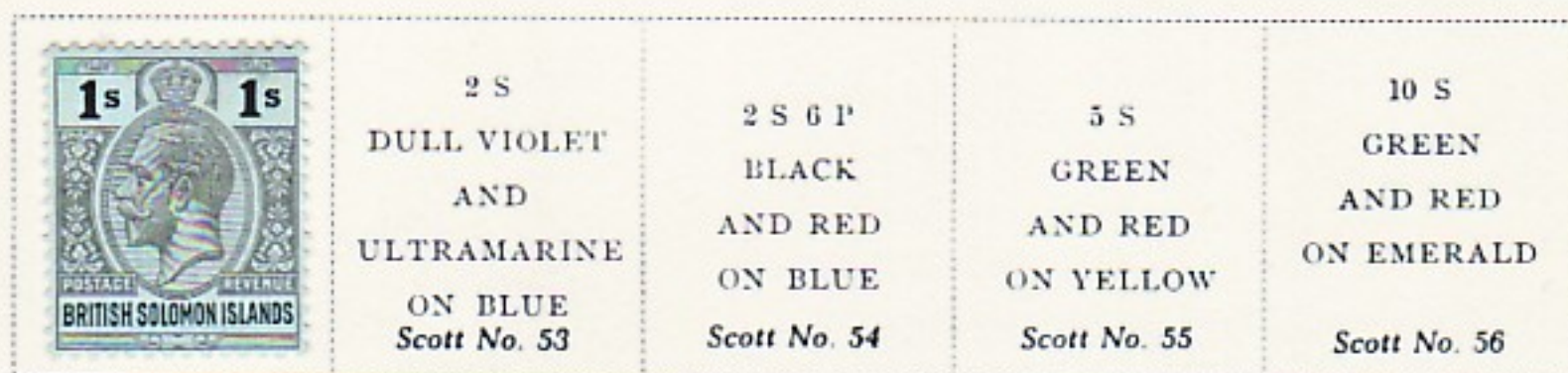
Watermarked Multiple Crown and Script C. A.



1924



1922-27



1931

Same  
4½ P  
RED BROWN  
Scott No. 49



Watermarked Multiple Crown and Script C. A.

The image displays three postage stamps from the British Solomon Islands, each featuring a profile of King George VI and a cityscape. The stamps are valued at 14/-, 3/-, and 6/- respectively. The text on the stamps includes "BRITISH SOLOMON ISLANDS", "1910-1935", and "POSTAGE & REVENUE".

12TH MAY 1957.

1s. BRITISH SOLOMON ISLANDS 1s.

1½s. BRITISH SOLOMON ISLANDS 1½s.

3s. BRITISH SOLOMON ISLANDS 3s.

The image displays a collection of 12 postage stamps from the British Solomon Islands, arranged in three rows. Each stamp features a profile portrait of King George VI in a circular frame on the left. The stamps are as follows:

- Top Row:**
  - 1d (green): Features a stylized sunburst design.
  - 1d (purple): Features two indigenous figures holding spears.
  - 4d (yellow): Features a thatched hut and palm trees.
  - 6d (blue): Features a tropical beach scene with palm trees.
  - 1 1/2d (red): Features a tropical island scene with palm trees and a boat.
- Middle Row:**
  - 2d (orange): Features a thatched hut and palm trees.
  - 2 1/2d (green): Features a tropical beach scene with palm trees.
  - 3d (blue): Features a tropical beach scene with palm trees and a boat.
  - 1d (red): Features a branch with fruit.
- Bottom Row:**
  - 2d (red): Features a volcano.
  - 5d (red): Features a tropical beach scene with palm trees and a boat.
  - 2 1/6d (blue): Features a tropical beach scene with palm trees and a boat.

Each stamp includes the text "BRITISH SOLOMON ISLANDS" at the bottom.



# BRITISH SOLOMON ISLANDS

Watermarked Multiple Crown and Script C. A.

1942



1946



1949



1949



1953





# BRITISH SOLOMON ISLANDS

Watermarked Multiple Crown and Script C. A.

1956



1958-60



Coat of Arms

£1

LIGHT BLUE  
AND BLACK

Scott No. 105



# BRITISH SOLOMON ISLANDS

Watermarked St. Edward's Crown and C A Multiple

1961



1963



1964





# BRITISH SOLOMON ISLANDS

Watermarked St. Edward's Crown and C A Multiple  
1965





# BRITISH SOLOMON ISLANDS

Watermarked St. Edward's Crown and C A Multiple

1965



1965



1966





# BRITISH SOLOMON ISLANDS

Watermarked St. Edward's Crown and C A Multiple

1966-67



1966





# BRITISH SOLOMON ISLANDS

Watermarked St. Edward's Crown and C A Multiple

1966



1966



1967



1968





# BRITISH SOLOMON ISLANDS

Watermarked St. Edward's Crown and C A Multiple  
1968

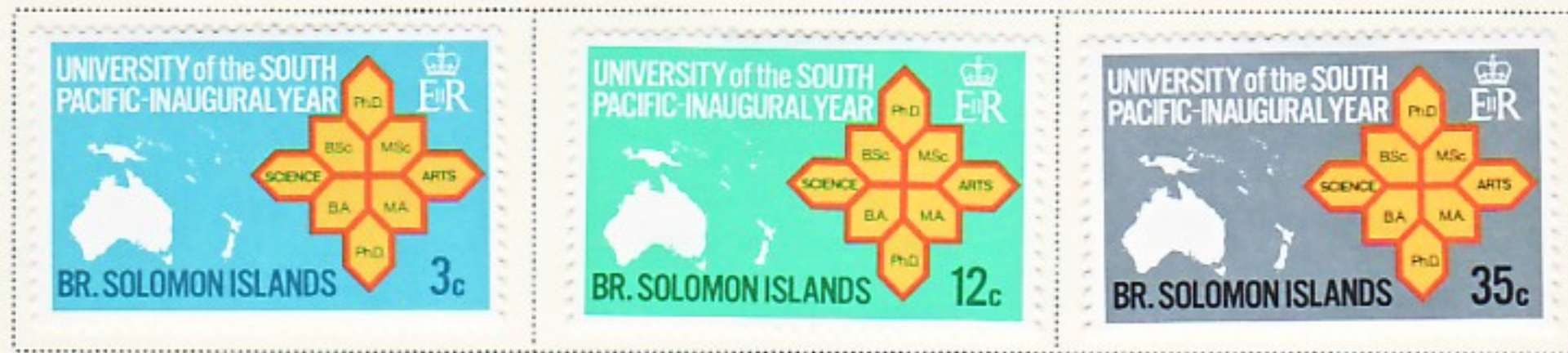




# BRITISH SOLOMON ISLANDS

Unwatermarked

1969



Watermarked St. Edward's Crown and C A Multiple

1969



1969





BRITISH SOLOMON ISLANDS

1969

THIRD SOUTH PACIFIC GAMES

PORT MORESBY



BRITISH SOLOMON ISLANDS



# BRITISH SOLOMON ISLANDS

Watermarked St. Edward's Crown and C A Multiple

1970



1970



1970





# BRITISH SOLOMON ISLANDS

Watermarked St. Edward's Crown and SL, Multiple

1971



1971



1971





# BRITISH SOLOMON ISLANDS

Watermarked St. Edward's Crown and CA Multiple

1971



1972



1972





# BRITISH SOLOMON ISLANDS

Watermarked St. Edward's Crown and CA Multiple

1972





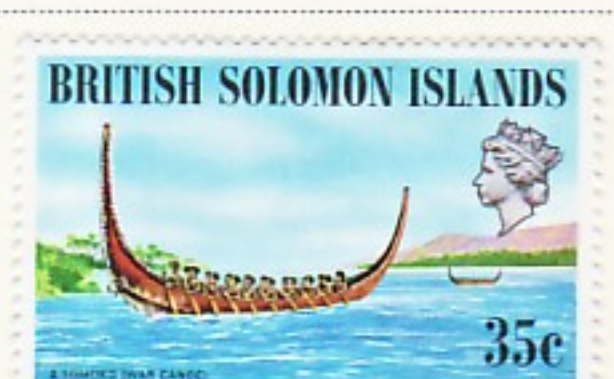
# BRITISH SOLOMON ISLANDS

Watermarked St. Edward's Crown and CA Multiple

1973



1973



1973





# BRITISH SOLOMON ISLANDS

Watermarked St. Edward's Crown and CA Multiple  
1973



1974

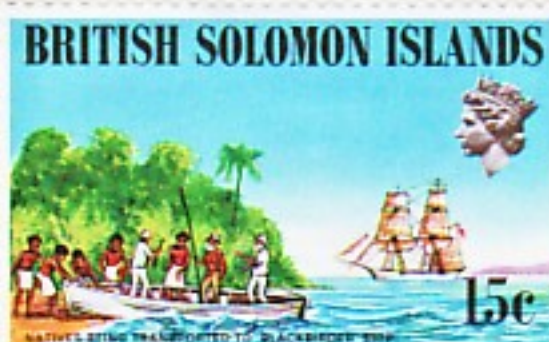




# BRITISH SOLOMON ISLANDS

Watermarked St. Edward's Crown and CA Multiple

1974





# BRITISH SOLOMON ISLANDS

1974





# BRITISH SOLOMON ISLANDS

Watermarked St. Edward's Crown and C A Multiple

1975





SOLOMON ISLANDS

1975





# SOLOMON ISLANDS

1975



Scott No. 295a



# SOLOMON ISLANDS

Watermarked St. Edward's Crown and C A Multiple

1975





# SOLOMON ISLANDS

Watermarked St. Edward's Crown and C A Multiple

1975



Watermarked St. Edward's Crown and C A Multiple, in Spiral

1975



Watermarked St. Edward's Crown and C A Multiple

1976





# SOLOMON ISLANDS

1976





# SOLOMON ISLANDS

1976

## Bi-centenary of American Independence



Scott 336a



# SOLOMON ISLANDS

1976



1977





# SOLOMON ISLANDS

Watermarked St. Edward's Crown and C A Multiple, in Spiral

1977





# SOLOMON ISLANDS

Watermarked St. Edward's Crown and C A Multiple, in Spiral

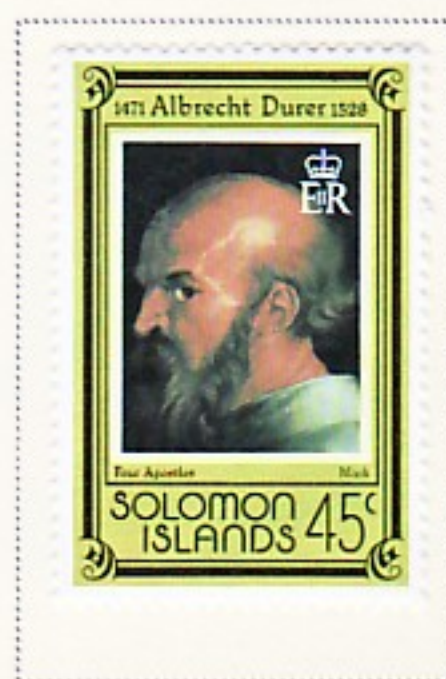
1977





# SOLOMON ISLANDS

1978





# SOLOMON ISLANDS

1978

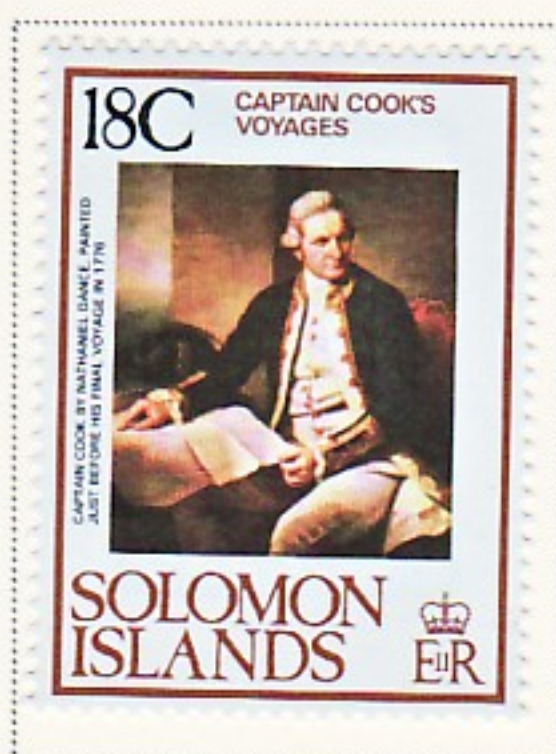


Scott 368



# SOLOMON ISLANDS

1978-79





# SOLOMON ISLANDS

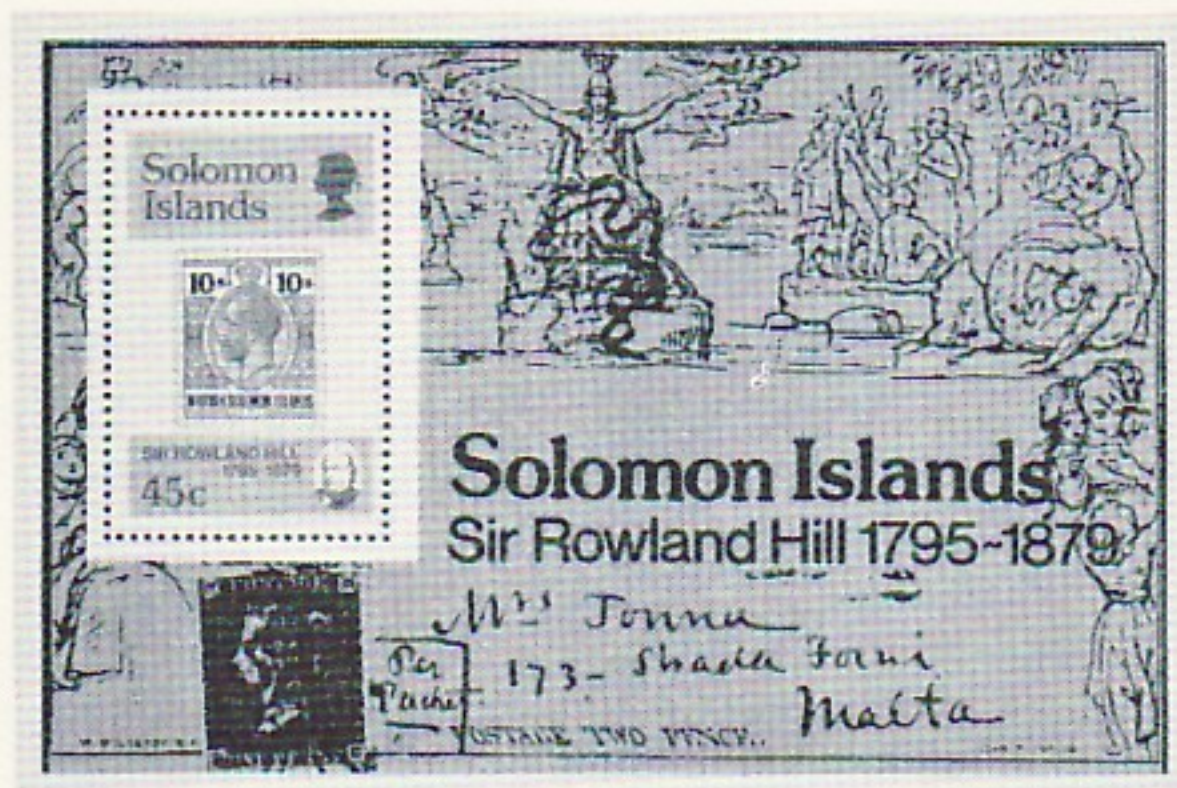
1979





# SOLOMON ISLANDS

1979

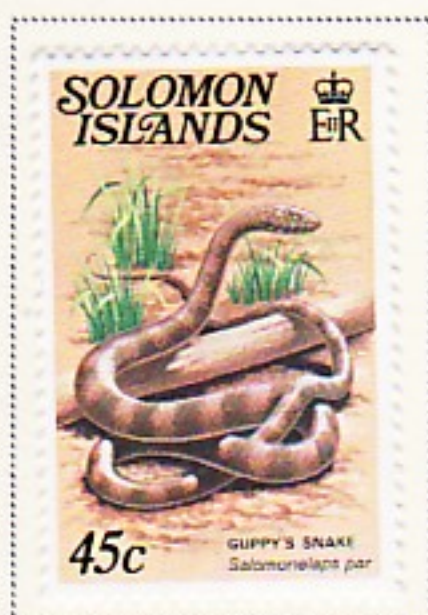
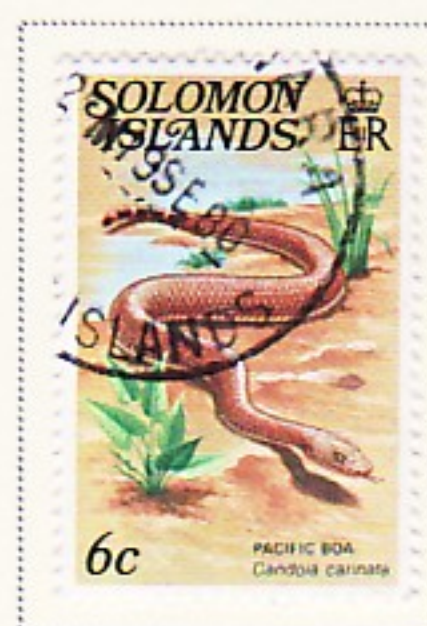
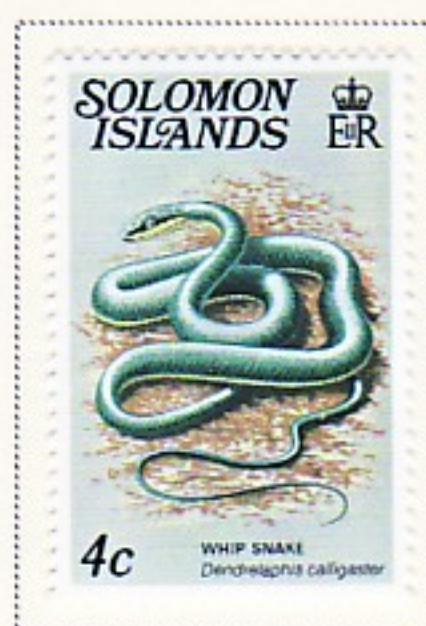
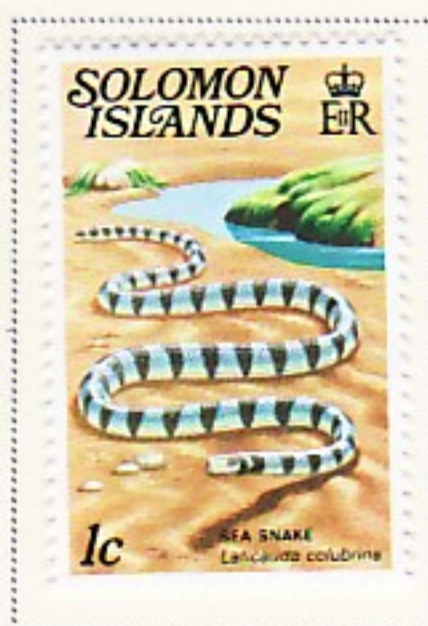


Scott 396



# SOLOMON ISLANDS

1979





# SOLOMON ISLANDS

1979

CHRISTMAS - I Y C 1979

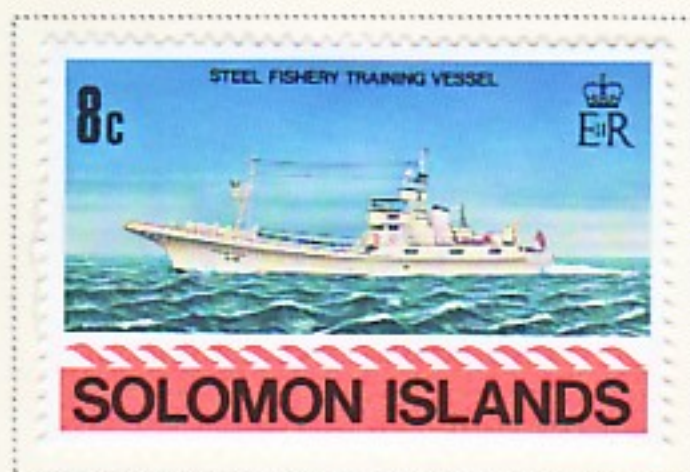
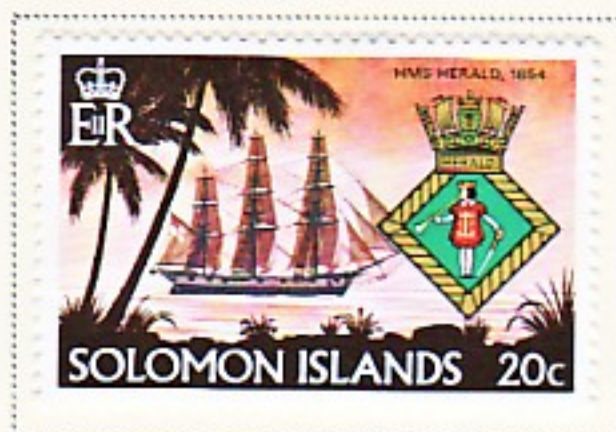


Scott 416a



# SOLOMON ISLANDS

1980





# SOLOMON ISLANDS

1980



Scott 425



# SOLOMON ISLANDS

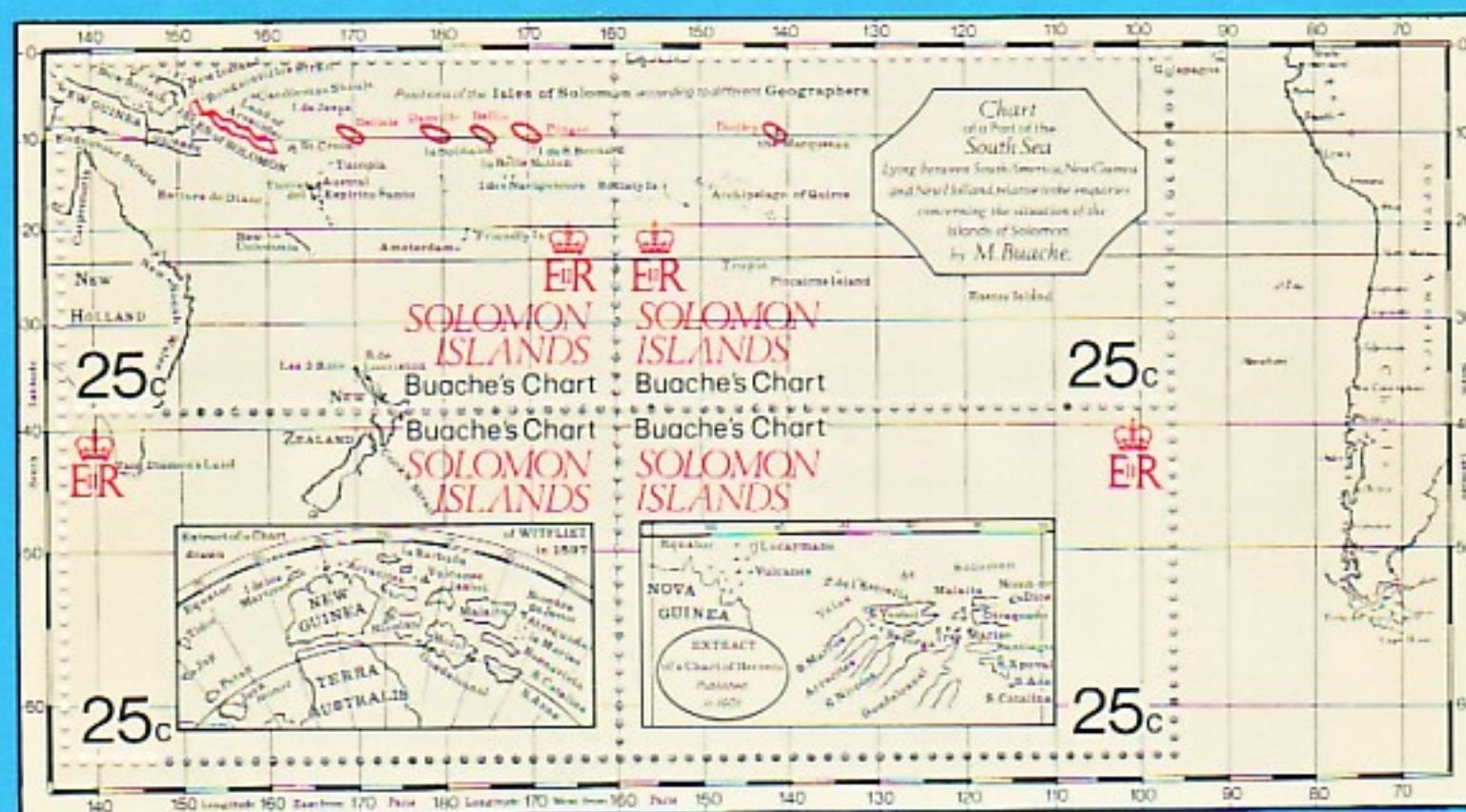
1980-81





# SOLOMON ISLANDS

1981



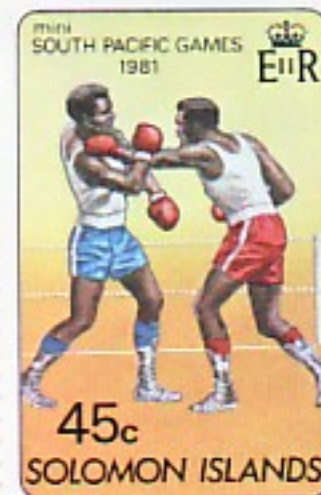
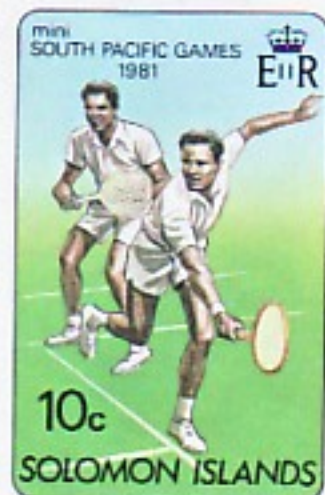
M. Jean Nicholas Buache (1741 - 1825), nephew of the geographer M. Philippe Buache (1700 - 1773) who had developed new theories on physical geography and a new technique for hydrographic chart making, was convinced that Solomons must lie 12½ degrees longitude between Santa Cruz and New Guinea. Purportedly in 1781, he put forward the theory that the islands seen by the French explorers Bougainville (1766) and Surville (1769), were part of Solomons. However, the French did not put this theory to the test until 1786 when they sent one of their Pacific explorers La Perouse to follow Buache's chart. The chart depicted was actually published in 1791. Buache included extracts from earlier charts i.e. by Witfliet - 1597 and Herrera - 1601, to expound his own theory.





# SOLOMON ISLANDS

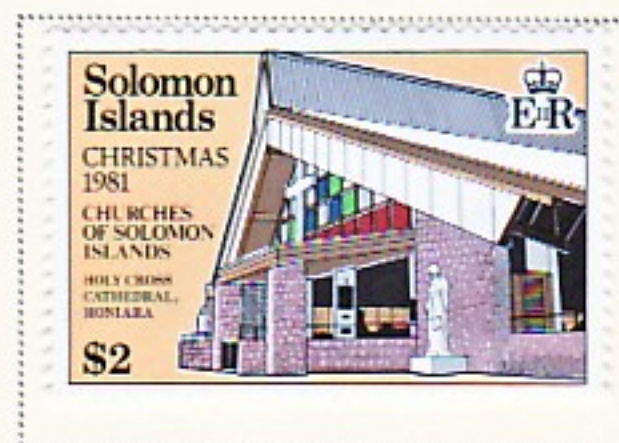
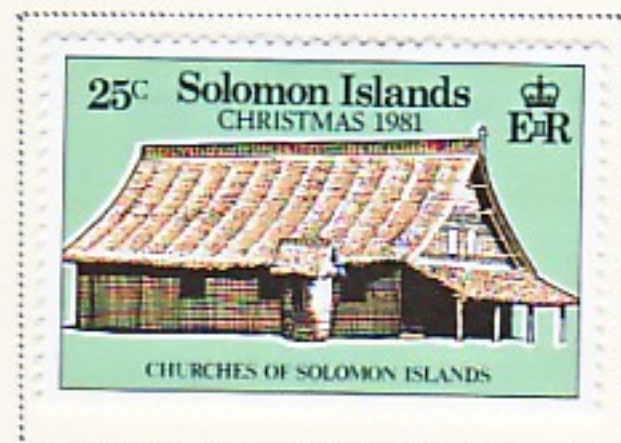
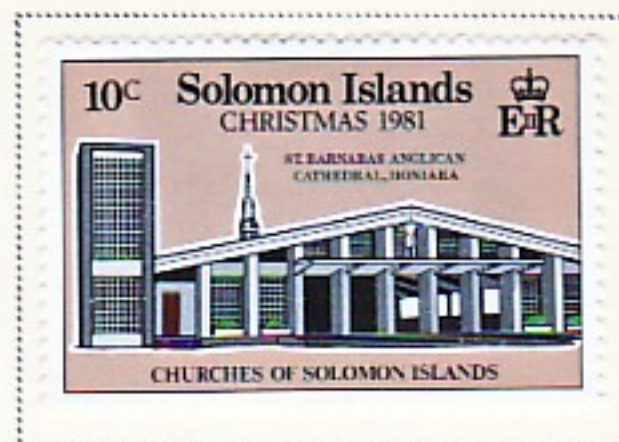
1981-82





# SOLOMON ISLANDS

1982





# SOLOMON ISLANDS

1982



Scott 477



Scott 480



# SOLOMON ISLANDS

1982



Scott 477a



# SOLOMON ISLANDS

1982

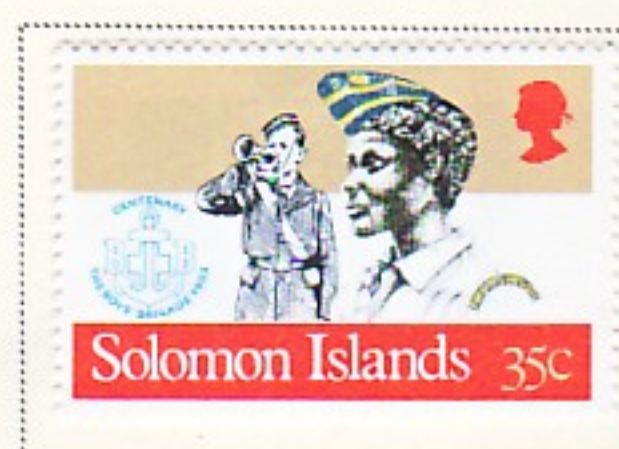


Scott 480a



# SOLOMON ISLANDS

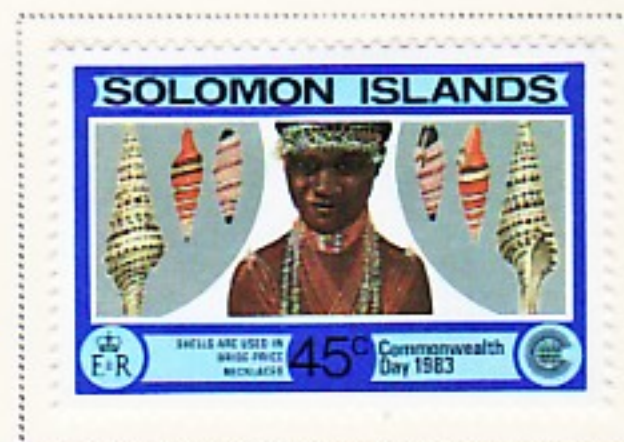
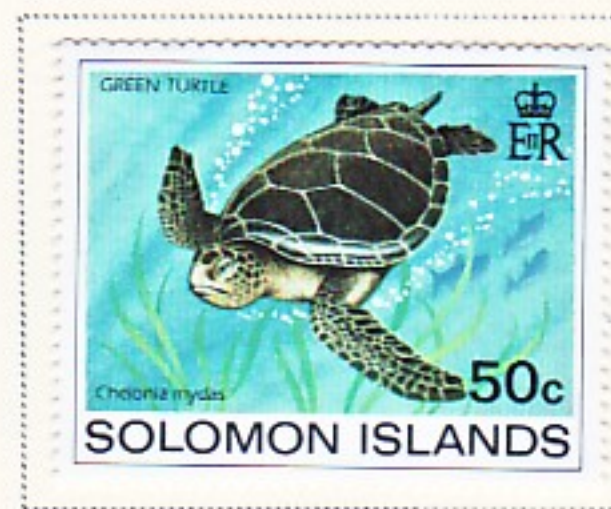
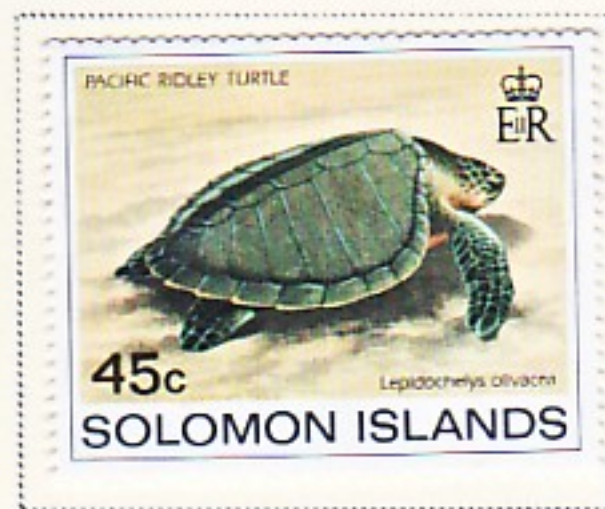
1982





# SOLOMON ISLANDS

1982-83





# SOLOMON ISLANDS

1983





# SOLOMON ISLANDS

1983



Scott 510a



# SOLOMON ISLANDS

1983-84





# SOLOMON ISLANDS

1983-84

## SOLOMON ISLANDS \* 1908 | 1983



The above reproduction marks the 75th Anniversary of Crown Agents' involvement in Solomon Islands stamps. In 1908 the 'Small Canoes' set of eleven stamps was released. The paper used embodied one of the earliest examples of the now famous CROWN AGENTS WATERMARK. The original stamps were printed by Thomas de la Rue in a size approximately 20 x 24mm. The issue was highly popular and successful: it was not fully replaced until 1914.

1983 coincidentally marks the 150th Anniversary of the Crown Agents who, over the years, have rendered many other services to the Solomon Islands, such as recruitment of Officials; banking and investment; engineering consultancy and stores procurement; hospital and medical services. Today the Crown Agents are still very much involved with the design and production of postage stamps for many countries. But few of these can trace their direct association back as far as 1908.

Scott 514a

## SOLOMON ISLANDS \* 1907 | 1984



U.P.U. XIX CONGRESS  
HAMBURG 1984

The first stamps issued by Solomon Islands are popularly referred to as the 1907 'Large Canoes'. They were based on a drawing by Mr Charles Woodford, Resident Commissioner, and were an instant success. Unfortunately their colourings did not comply with prevailing regulations of the Universal Postal Union and, so, in 1908, the 'Small Canoes' issue, reproduced above replaced them.

The paper used embodied one of the earliest examples of the now famous Crown Agents Watermark, the Multiple Crown, C.A. sideways. The stamps were printed by Thomas De La Rue.

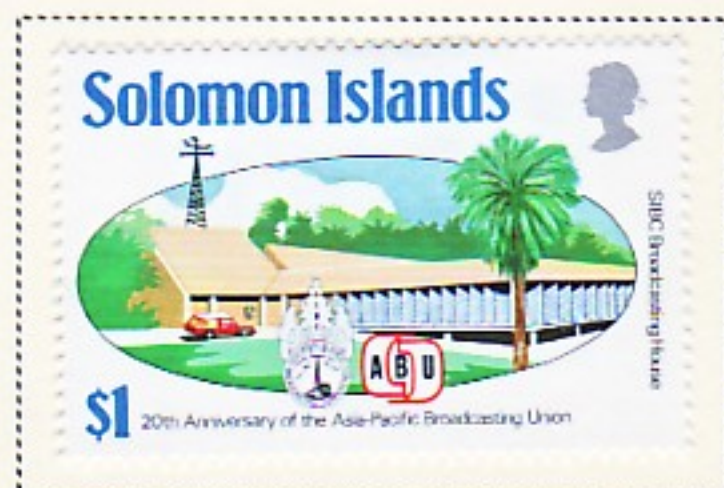
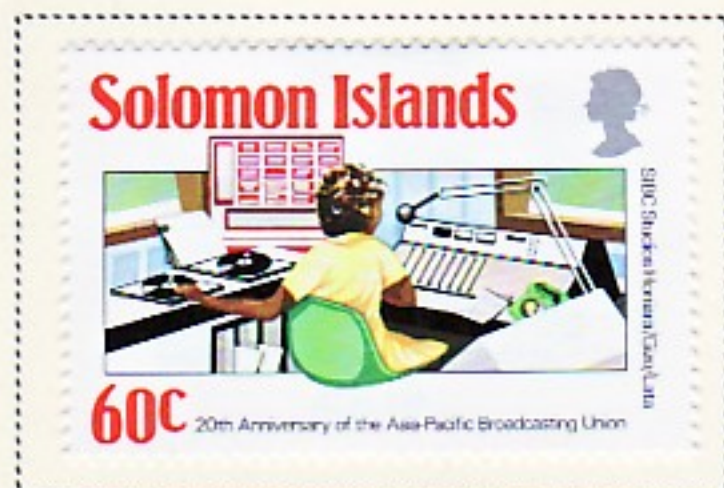
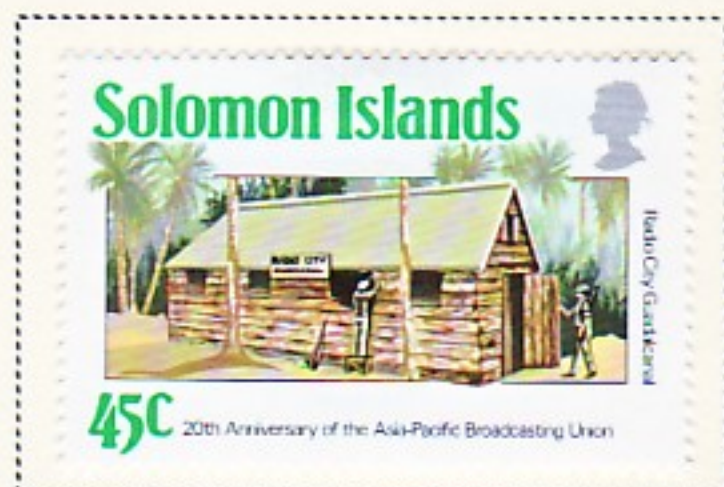
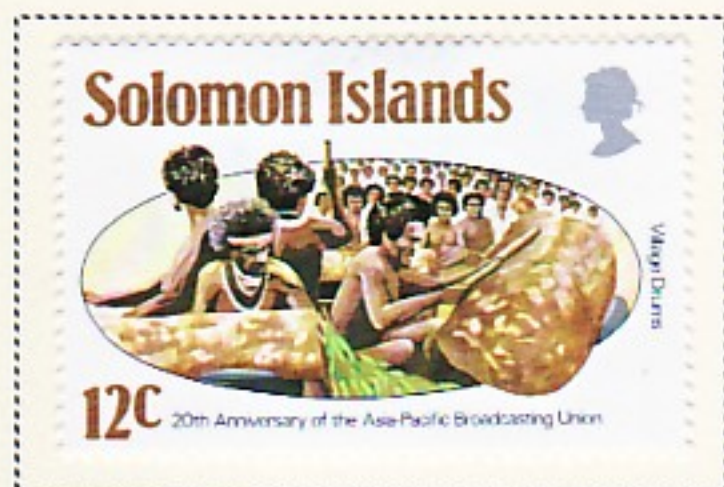
1984 is highly significant for Solomon Islands as the nation has attained full membership of the Universal Postal Union with effect from 1st January. As evidence of the nation's commitment to the ideals of the Union, two delegates will, for the first time, attend, and participate in, the UPU XIX Congress in Hamburg in June.

Scott 525



# SOLOMON ISLANDS

1984





# SOLOMON ISLANDS

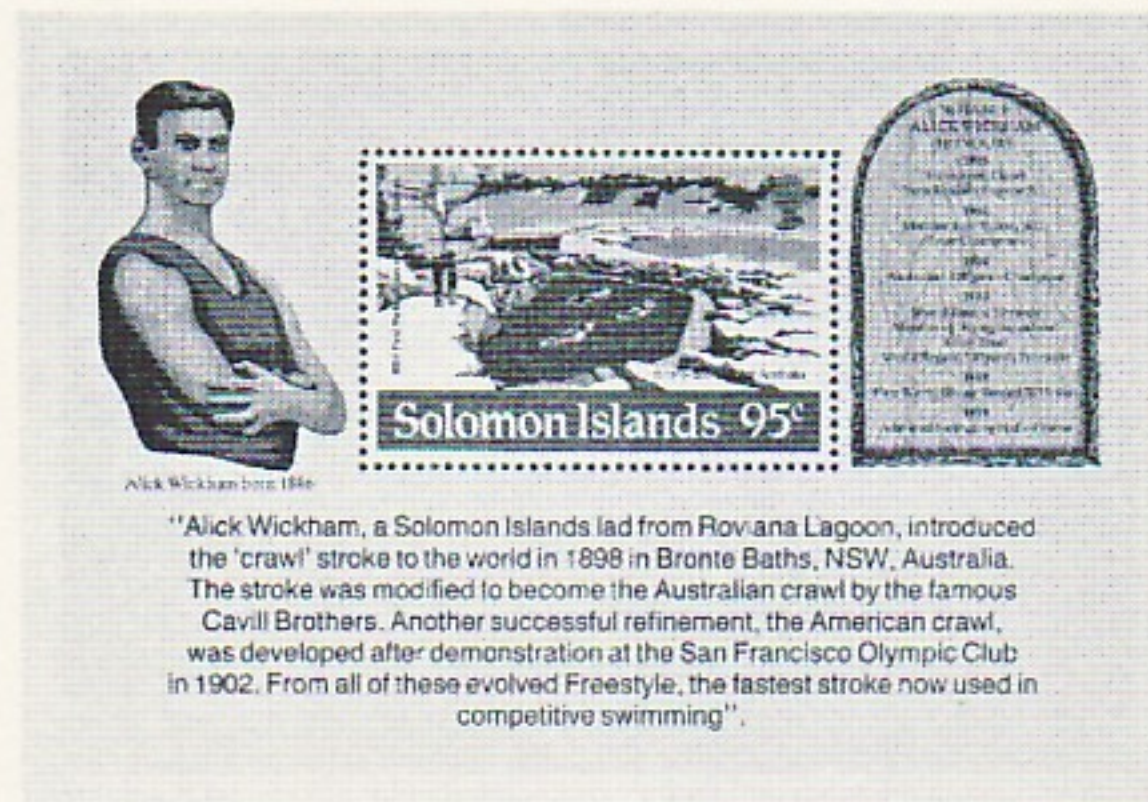
1984





# SOLOMON ISLANDS

1984



Scott 534



Scott 538a



# SOLOMON ISLANDS

1985





# SOLOMON ISLANDS

1985



The Life and Times of  
Her Majesty Queen Elizabeth The Queen Mother

Scott 547



Scott 554a



# SOLOMON ISLANDS

1985



Scott 556



# SOLOMON ISLANDS

1985-86





# SOLOMON ISLANDS

1986

## SOLOMON ISLANDS

### HYDRO-ELECTRICITY

#### MICRO-SCALE SCHEME AT IRIRI VILLAGE WESTERN PROVINCE

A pioneer project, which became operational in 1983, providing electrical power to a remote village, using natural water resources.

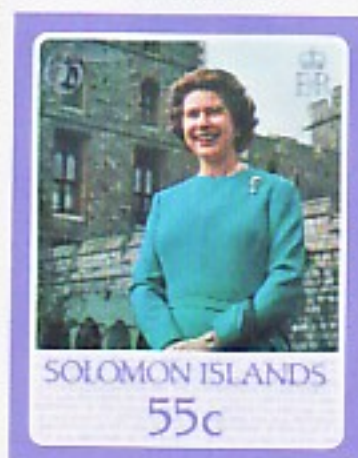
Similar projects have since begun or been completed, following the inspiration of Iriri.





# SOLOMON ISLANDS

1986





# SOLOMON ISLANDS

1986





# SOLOMON ISLANDS

1986



THE OFFICIAL 1987 AMERICA'S CUP POSTAGE STAMPS



THE OFFICIAL 1987 AMERICA'S CUP POSTAGE STAMPS



THE OFFICIAL 1987 AMERICA'S CUP POSTAGE STAMPS



THE OFFICIAL 1987 AMERICA'S CUP POSTAGE STAMPS



# SOLOMON ISLANDS

1986





# SOLOMON ISLANDS

1987





# SOLOMON ISLANDS

1987





# SOLOMON ISLANDS

1987





# SOLOMON ISLANDS

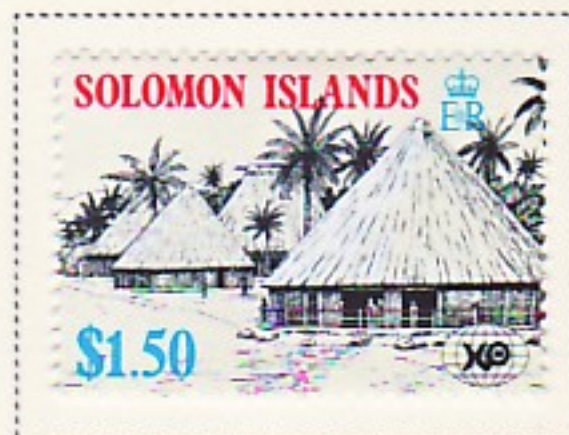
1987





# SOLOMON ISLANDS

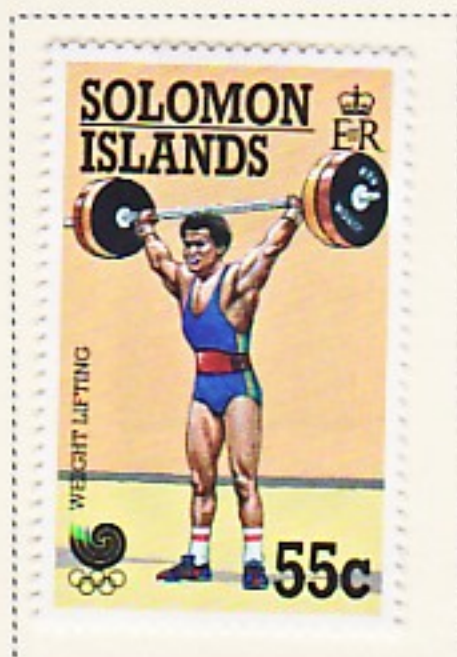
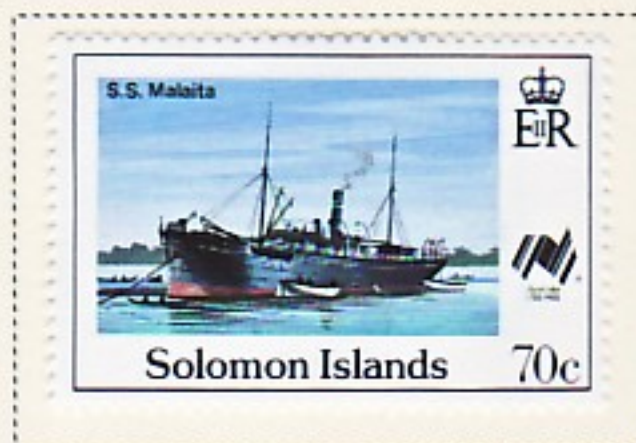
1988





# SOLOMON ISLANDS

1988





# SOLOMON ISLANDS

1988



Scott 613a



Scott 613b



Scott 621a



# SOLOMON ISLANDS

1988

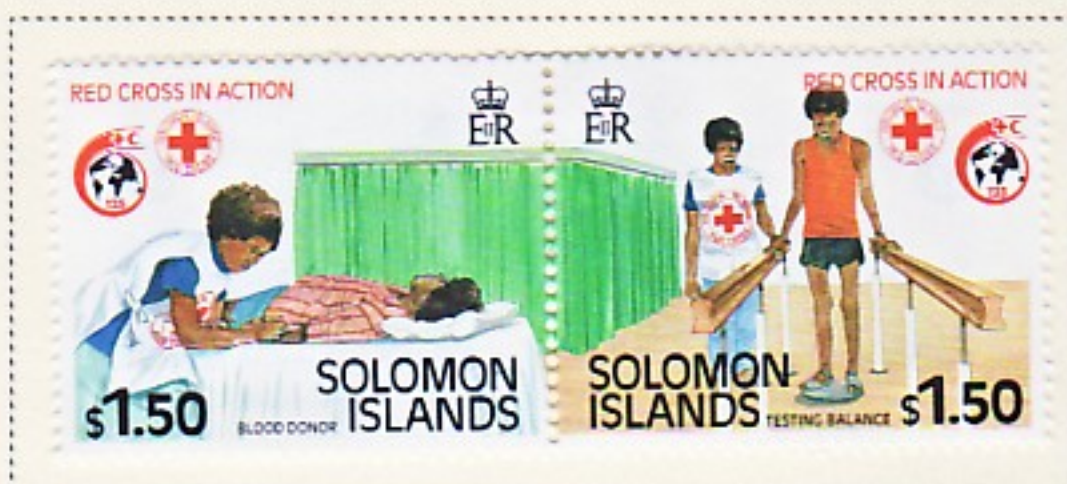


Scott 626



# SOLOMON ISLANDS

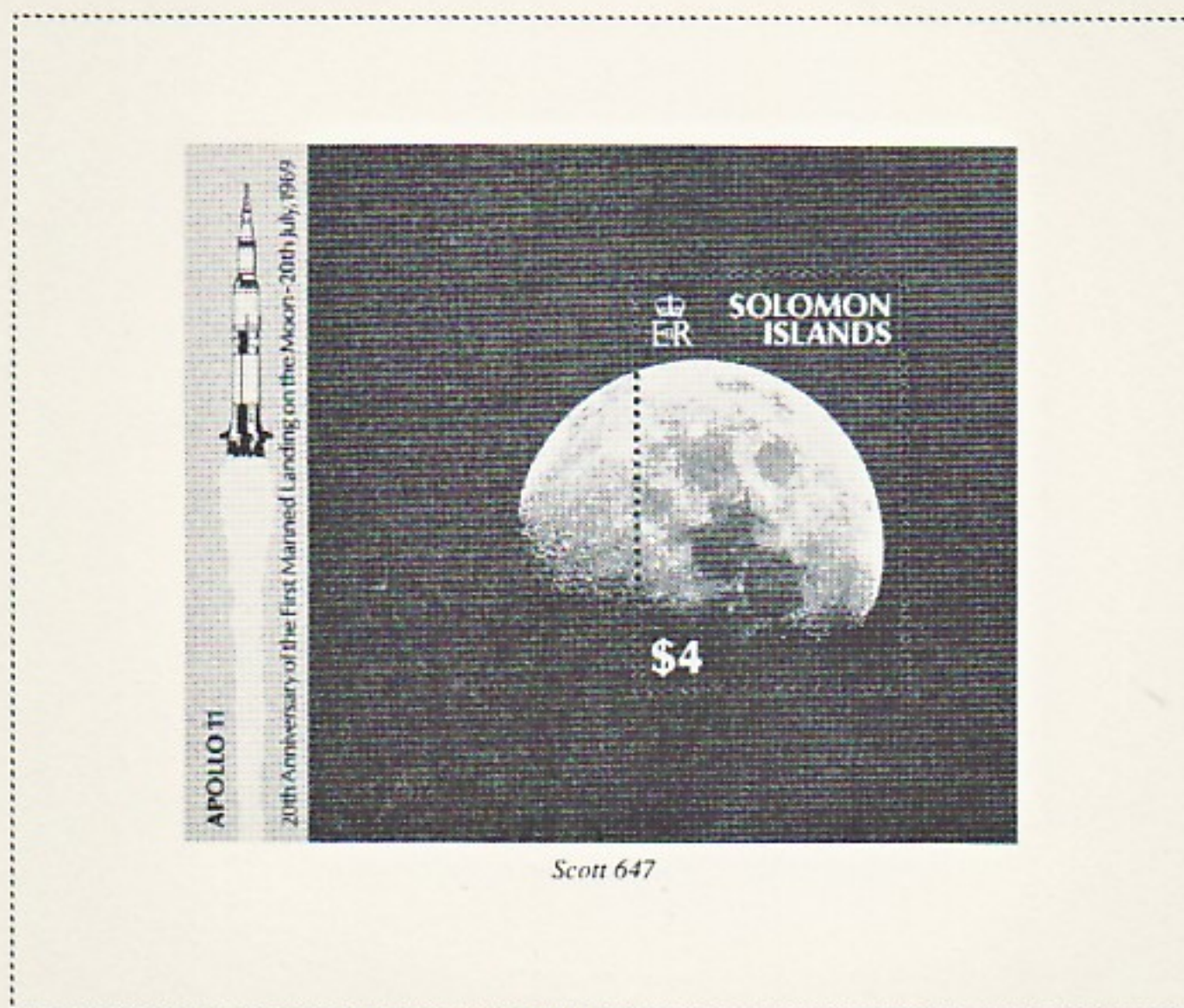
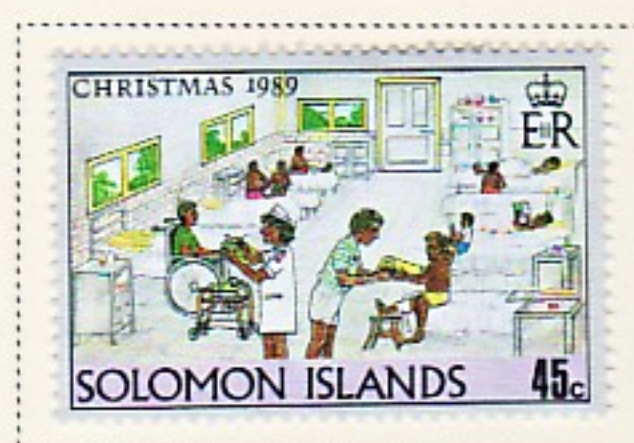
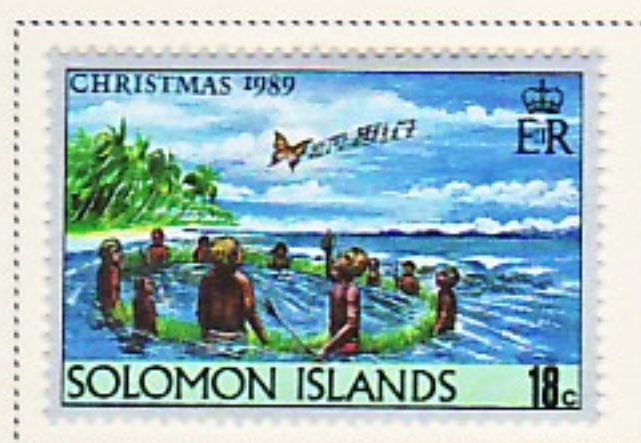
1989





# SOLOMON ISLANDS

1989



Scott 647



# SOLOMON ISLANDS

1989

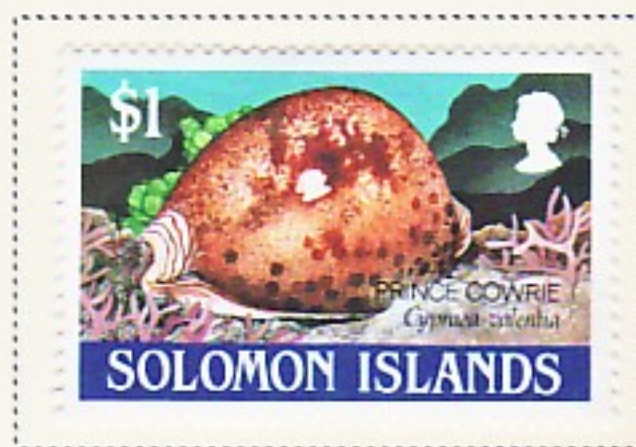
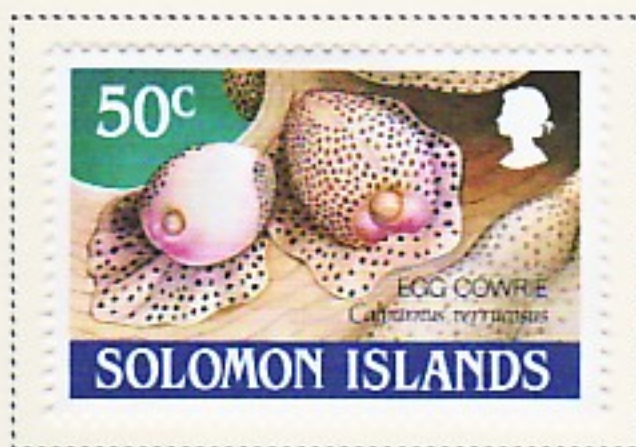


Scott 652



# SOLOMON ISLANDS

1990





# SOLOMON ISLANDS

1990





# SOLOMON ISLANDS

1991





# SOLOMON ISLANDS

1991





# SOLOMON ISLANDS

1991



Scott 698



Scott 707



# SOLOMON ISLANDS

1991



Scott 702a



# SOLOMON ISLANDS

1992





# SOLOMON ISLANDS

1992





# SOLOMON ISLANDS

1992



Scott 726a



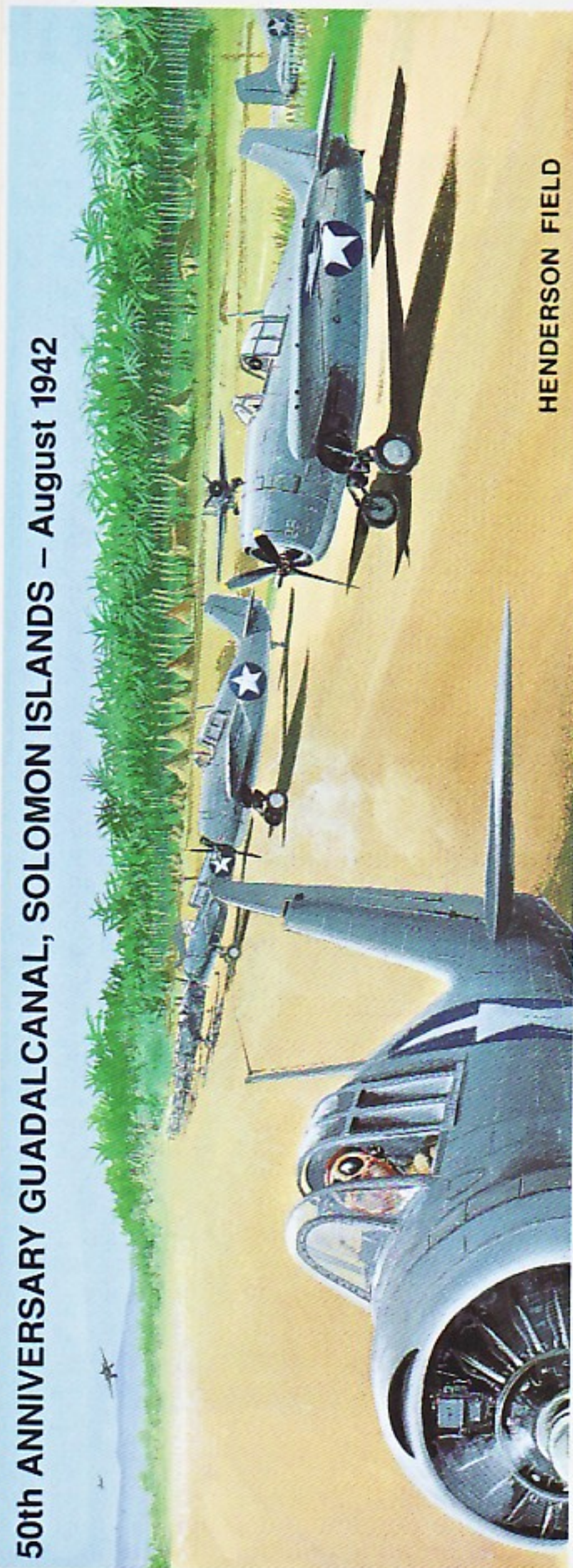
Scott 726b



# SOLOMON ISLANDS

1992

50th ANNIVERSARY GUADALCANAL, SOLOMON ISLANDS – August 1942



HENDERSON FIELD



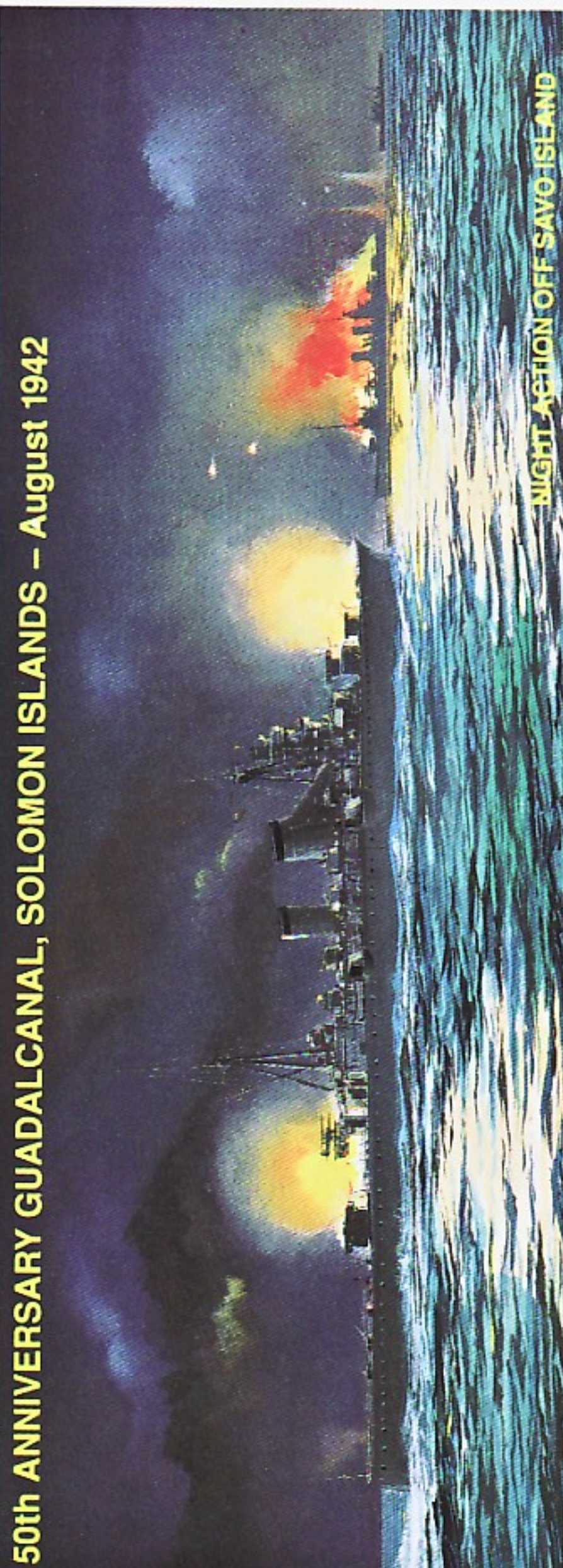


# SOLOMON ISLANDS

1992



## 50th ANNIVERSARY GUADALCANAL, SOLOMON ISLANDS - August 1942





# SOLOMON ISLANDS

1993



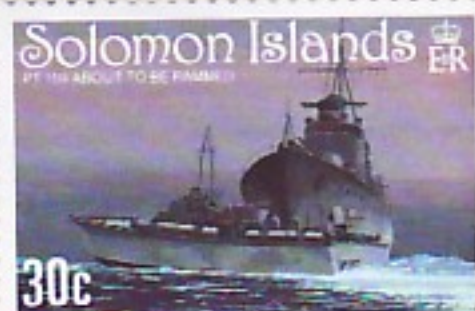
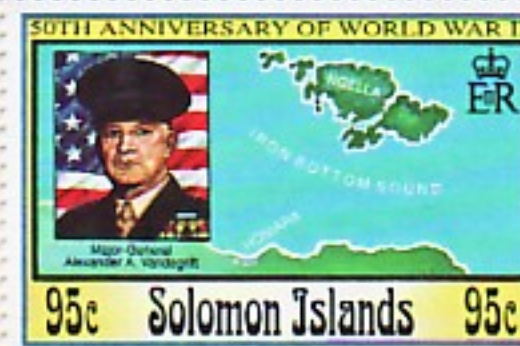
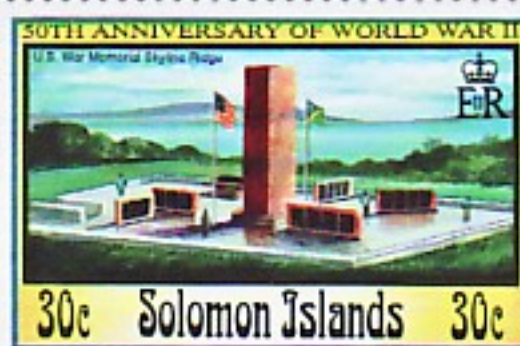
LEIGH-MARDON  
MELBOURNE, AUSTRALIA

LEIGH-MARDON  
MELBOURNE, AUSTRALIA



# SOLOMON ISLANDS

1993



BDT INTERNATIONAL  
SECURITY PRINTING LTD

BDT INTERNATIONAL  
SECURITY PRINTING LTD



# SOLOMON ISLANDS

1993



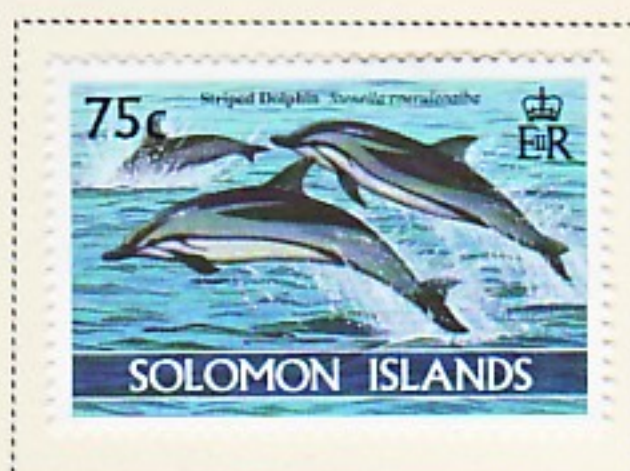
Scott 760





# SOLOMON ISLANDS

1994



Family means being together  
INTERNATIONAL  
YEAR OF THE FAMILY





# SOLOMON ISLANDS

1994

SOLOMON ISLANDS



*Vindula sapor sapor*

70c

SOLOMON ISLANDS



*Papilio aegaeus aegaeus*

70c

SOLOMON ISLANDS



*Graphium bicetaon*

70c

SOLOMON ISLANDS



*Graphium mendana*

70c

SOLOMON ISLANDS



필라코리아1994

70c

SOLOMON ISLANDS



*Graphium meeki*

70c

SOLOMON ISLANDS



*Danaus schenkli schenkli*

70c

SOLOMON ISLANDS



*Papilio polybus*

70c

SOLOMON ISLANDS



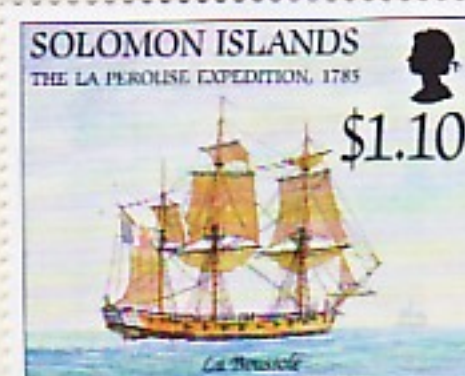
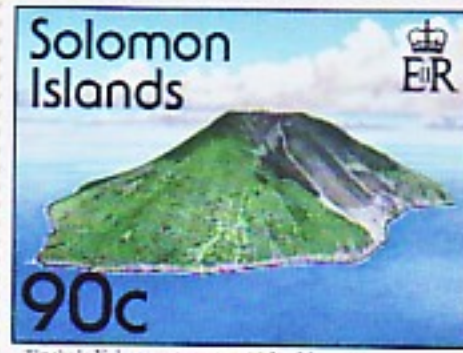
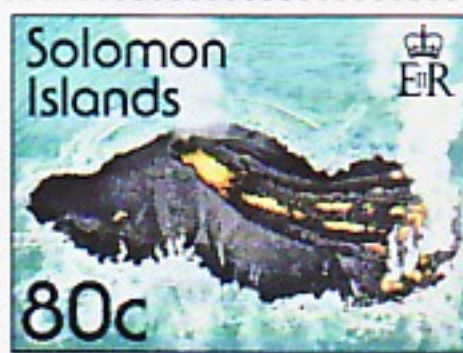
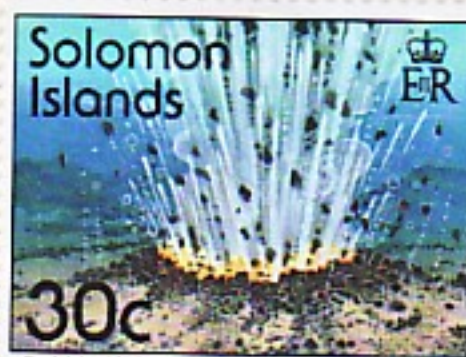
*Phaedyra fissizonata vella*

70c



# SOLOMON ISLANDS

1994-95





# SOLOMON ISLANDS

1994-95



Scott 783

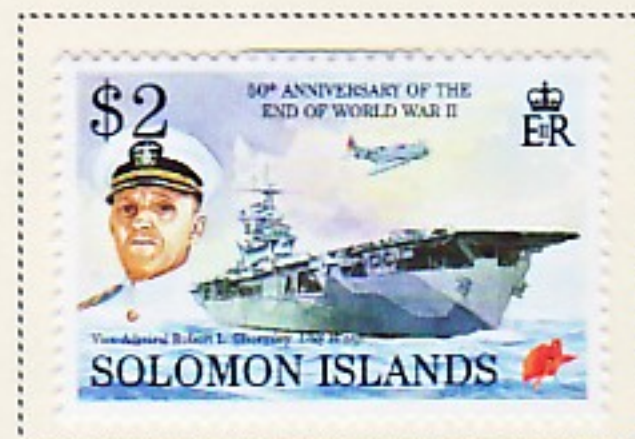
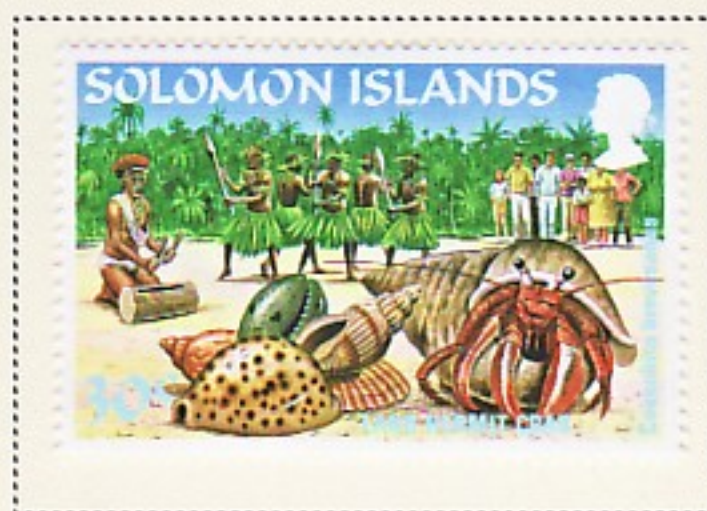


Scott 793



# SOLOMON ISLANDS

1995





# SOLOMON ISLANDS

1995



Scott 798



Scott 803



Scott 808



# SOLOMON ISLANDS

1995





# SOLOMON ISLANDS

1996





# SOLOMON ISLANDS

1996



Scott 823

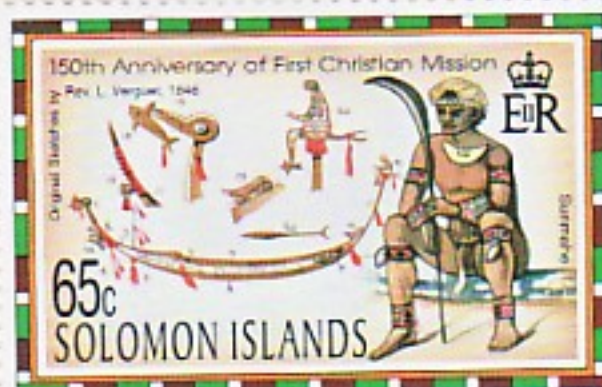
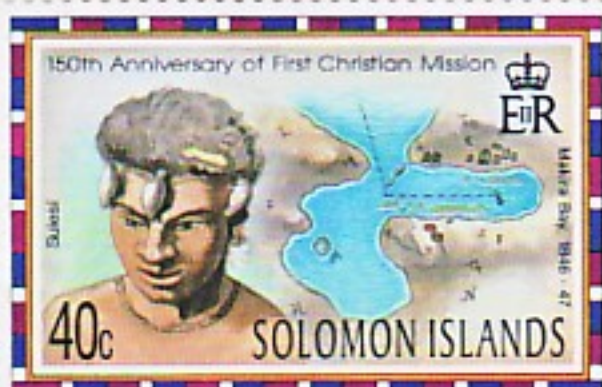
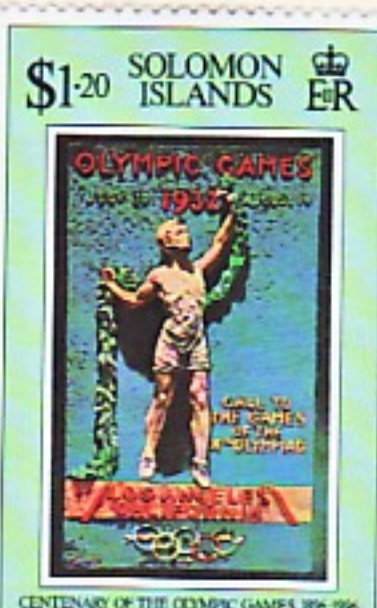
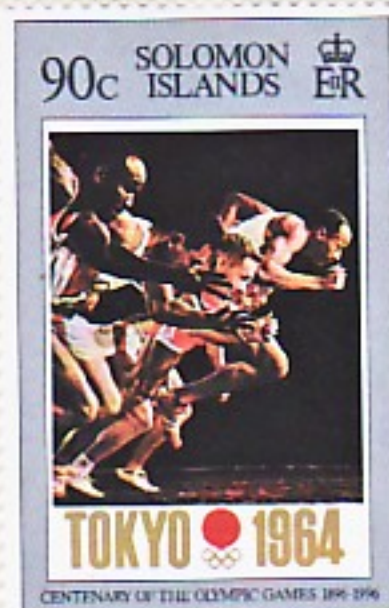


Scott 828



# SOLOMON ISLANDS

1996



The House of  
Questa



The House of  
Questa



The House of  
Questa



# SOLOMON ISLANDS

1996



10th Asian International Philatelic Exhibition

Scott 837



# BRITISH SOLOMON ISLANDS

## POSTAGE DUE STAMPS

Watermarked Multiple Crown and Script C. A.

1940

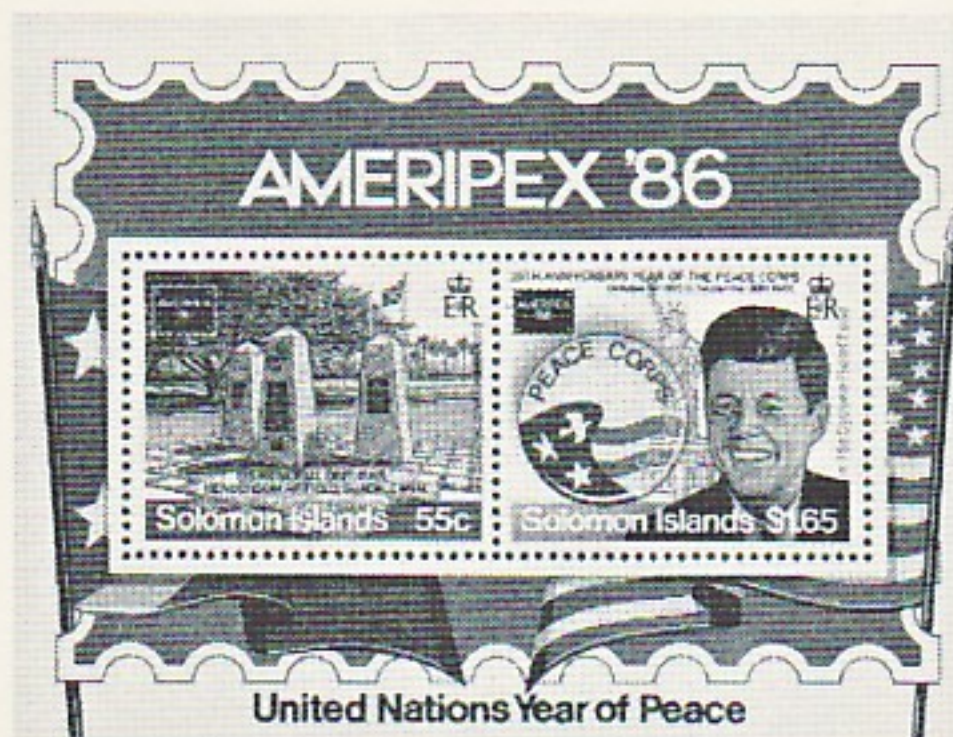




# SOLOMON ISLANDS

1982-86

SEMI-POSTAL STAMPS



Scott B3