



TIMBRES  
DE BARBUDA (Antigua-et-Barbuda)

1968





# BARBUDA

Part of the Leeward Islands and a dependency of Antigua. Area: 63 sq. mi.; pop.: 1150. From 1922-1968 Barbuda used stamps of Antigua and Leeward Islands.

Issues of ~~1968~~ 1968-69





# BARBUDA

ISSUES OF 1969-70





# BARBUDA

ISSUES OF 1970





# BARBUDA

ISSUES OF 1970-71





# BARBUDA

ISSUES OF 1970-71





# BARBUDA

ISSUES OF 1973





1973





1973





# BARBUDA

ISSUES OF 1973-74



135a  
SS





# BARBUDA

ISSUES OF 1974





# BARBUDA

ISSUES OF 1974





# BARBUDA

ISSUES OF 1974





1974





1974





1974

## Steel bands of Antigua



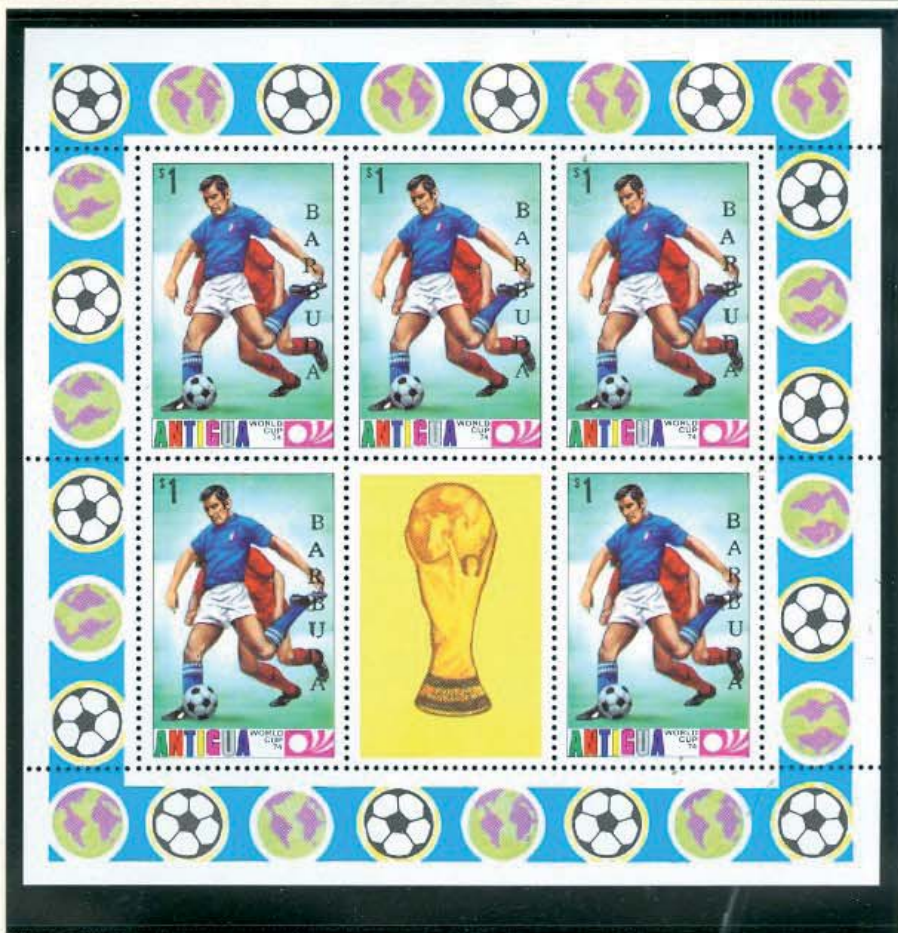


1974





1974





1974



1974





# BARBUDA

ISSUES OF 1974





1974





1974

· Centenary of the U. P. U. 1874-1974 ·

BARBUDA

Centenary of the U. P. U. 1874-1974  
UNION POSTALE UNIVERSELLE



BARBUDA 35c

Centenary of the U. P. U. 1874-1974  
UNION POSTALE UNIVERSELLE



BARBUDA \$1.20

Centenary of the U. P. U. 1874-1974  
UNION POSTALE UNIVERSELLE



BARBUDA \$2.50

BARBUDA



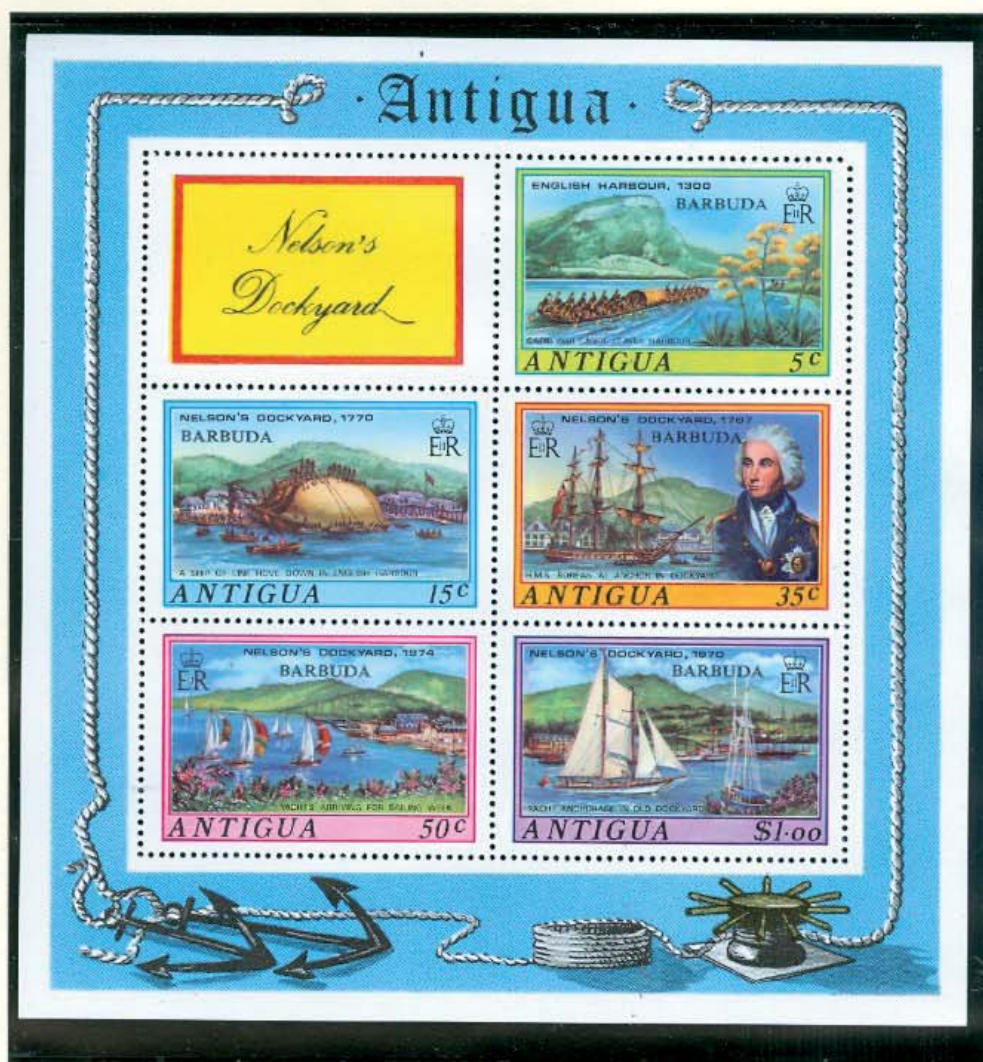
# BARBUDA

ISSUES OF 1975





1975





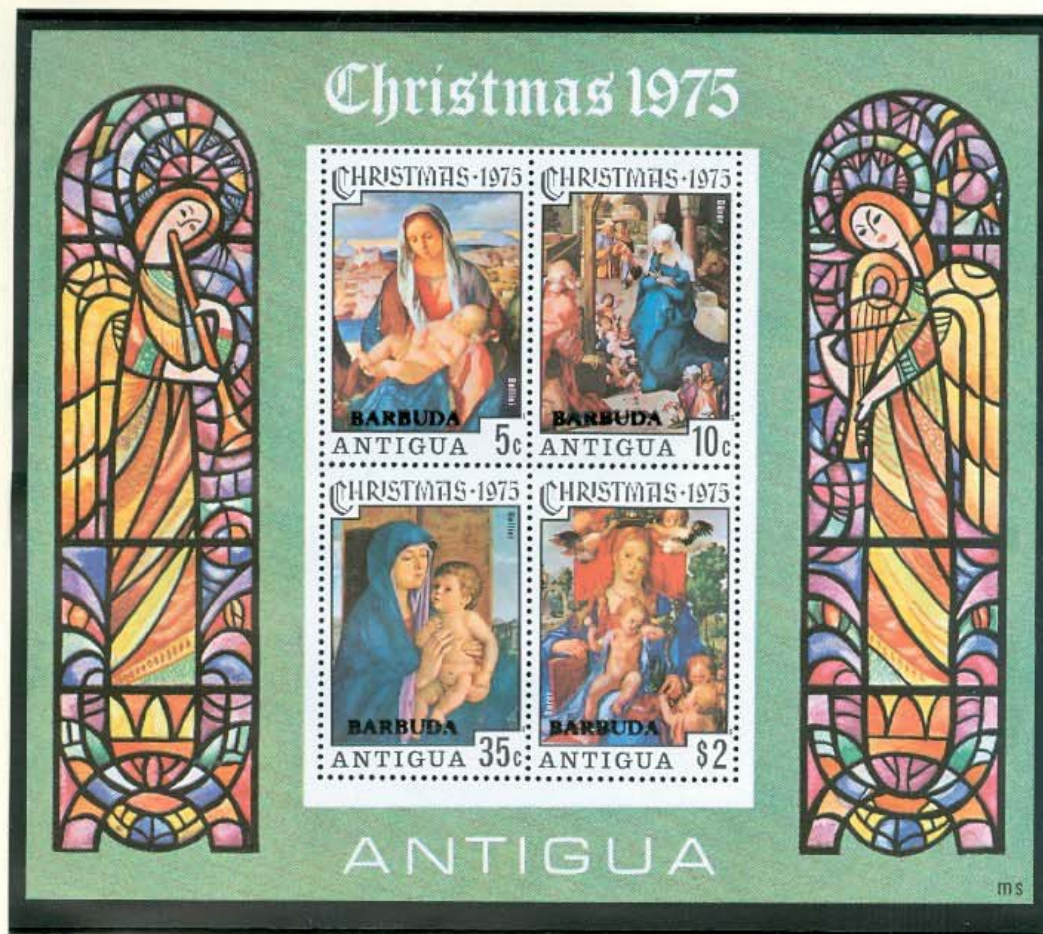
# BARBUDA

ISSUES OF 1975





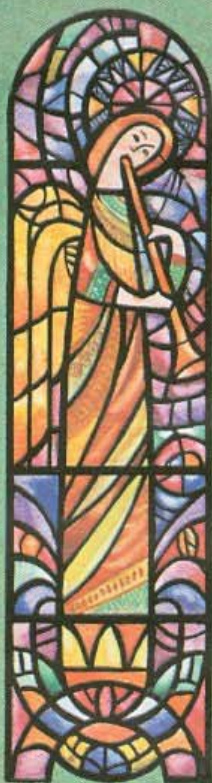
1975





1975

# Christmas 1975



ANTIGUA

ms



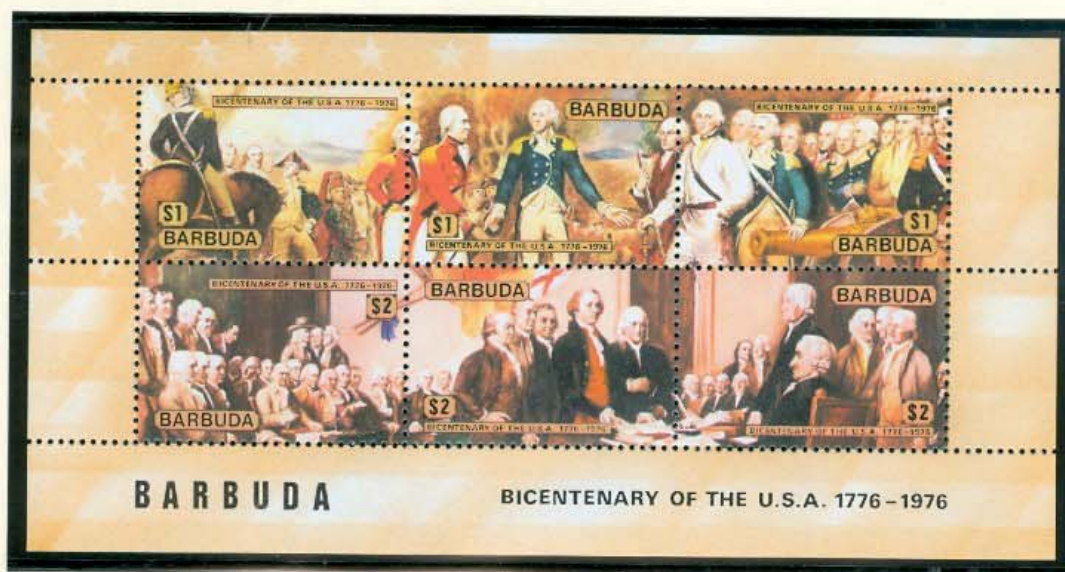
# BARBUDA

ISSUES OF 1975-76





1976





# BARBUDA

ISSUES OF 1976

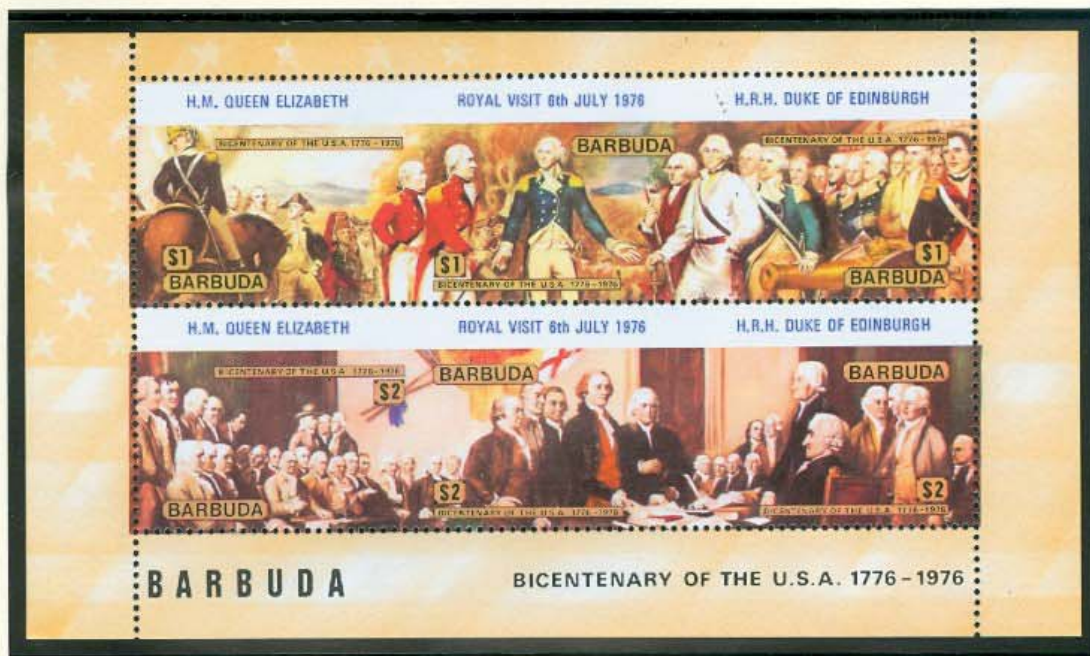
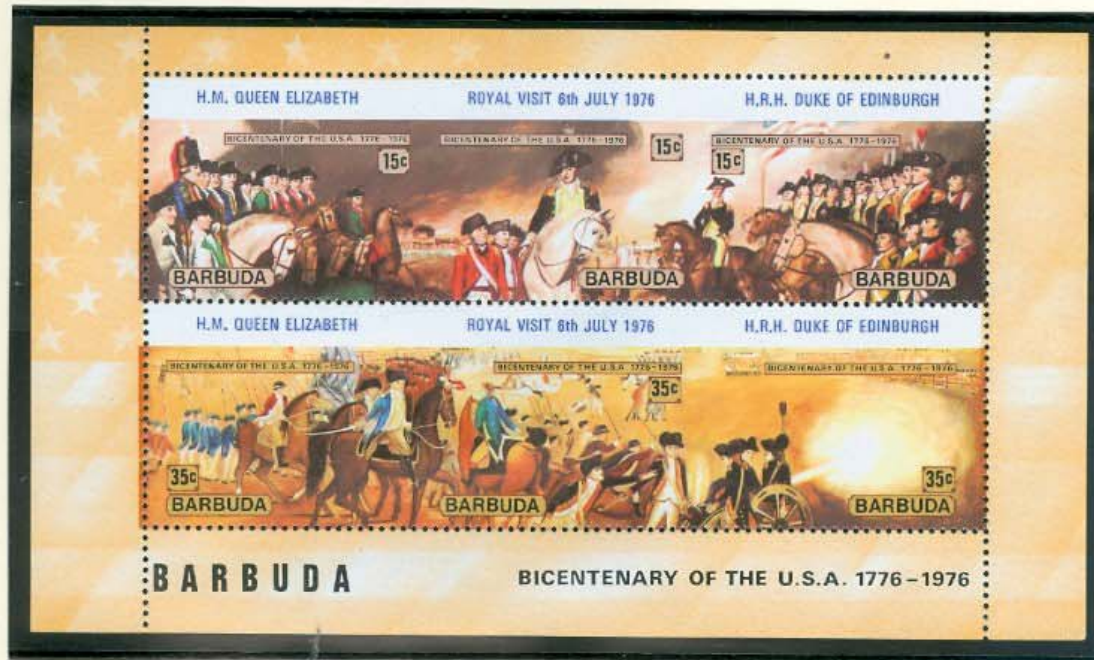


IMPERFORATE





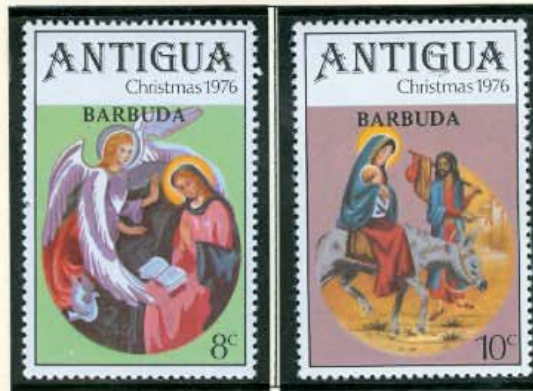
1976





# BARBUDA

ISSUES OF 1976-77





# BARBUDA

ISSUES OF 1976-77





1976 - 77

*H.M.  
Queen Elizabeth  
II  
Silver Jubilee  
1952-1977*



Royal Coronation  
OF HER MOST EXCELLENT  
MAJESTY  
QUEEN ELIZABETH II



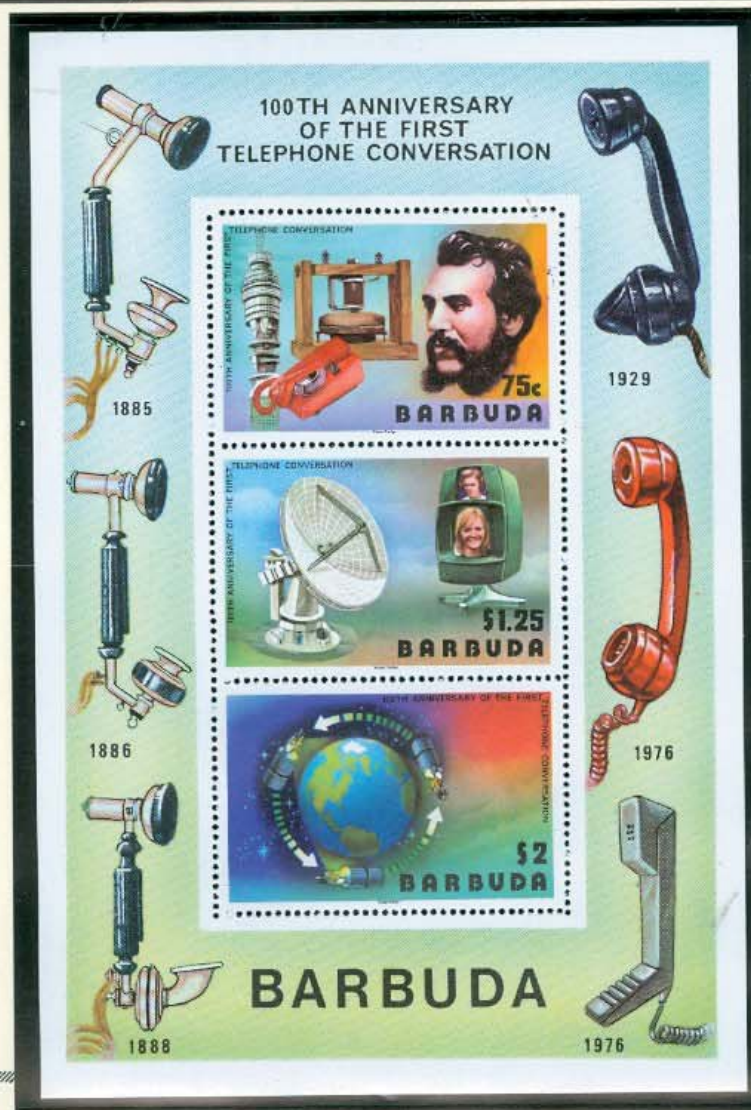
IN THE ABBEY CHURCH OF  
ST PETER WESTMINSTER  
ON TUESDAY  
THE SECOND DAY OF JUNE 1953



  
**ANTIGUA**  
OLYMPIC  
GAMES  
MONTREAL  
CANADA  
1976



1977





# BARBUDA

ISSUES OF 1977





# BARBUDA

ISSUES OF 1977





1977



## ANTIGUA

Caribbean Boy Scout Jamboree  
Jamaica 1977

Boy Scouts of the First, Second and Third Antigua





1977

# ANTIGUA CARNIVAL

21st ANNIVERSARY





1977

## ROYAL JUBILEE VISIT



OCTOBER 28th 1977

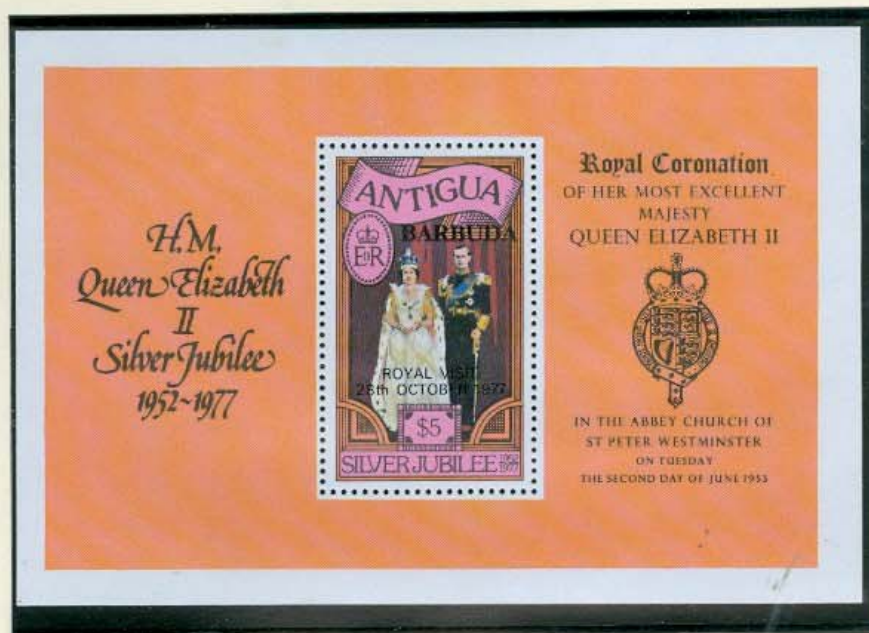


# BARBUDA 1977





1977





1977





# BARBUDA

ISSUES OF 1978





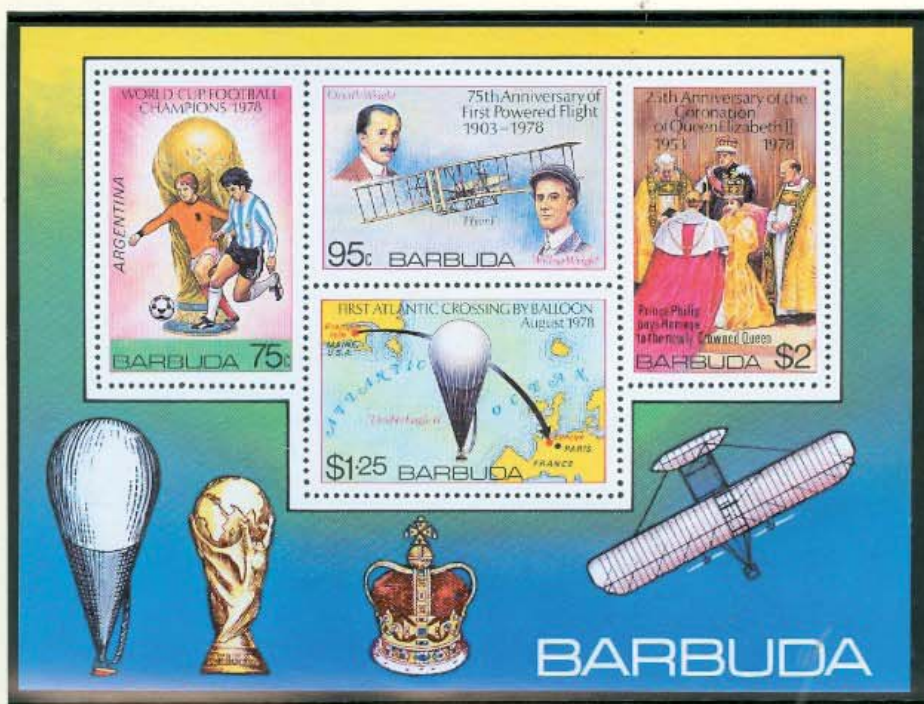
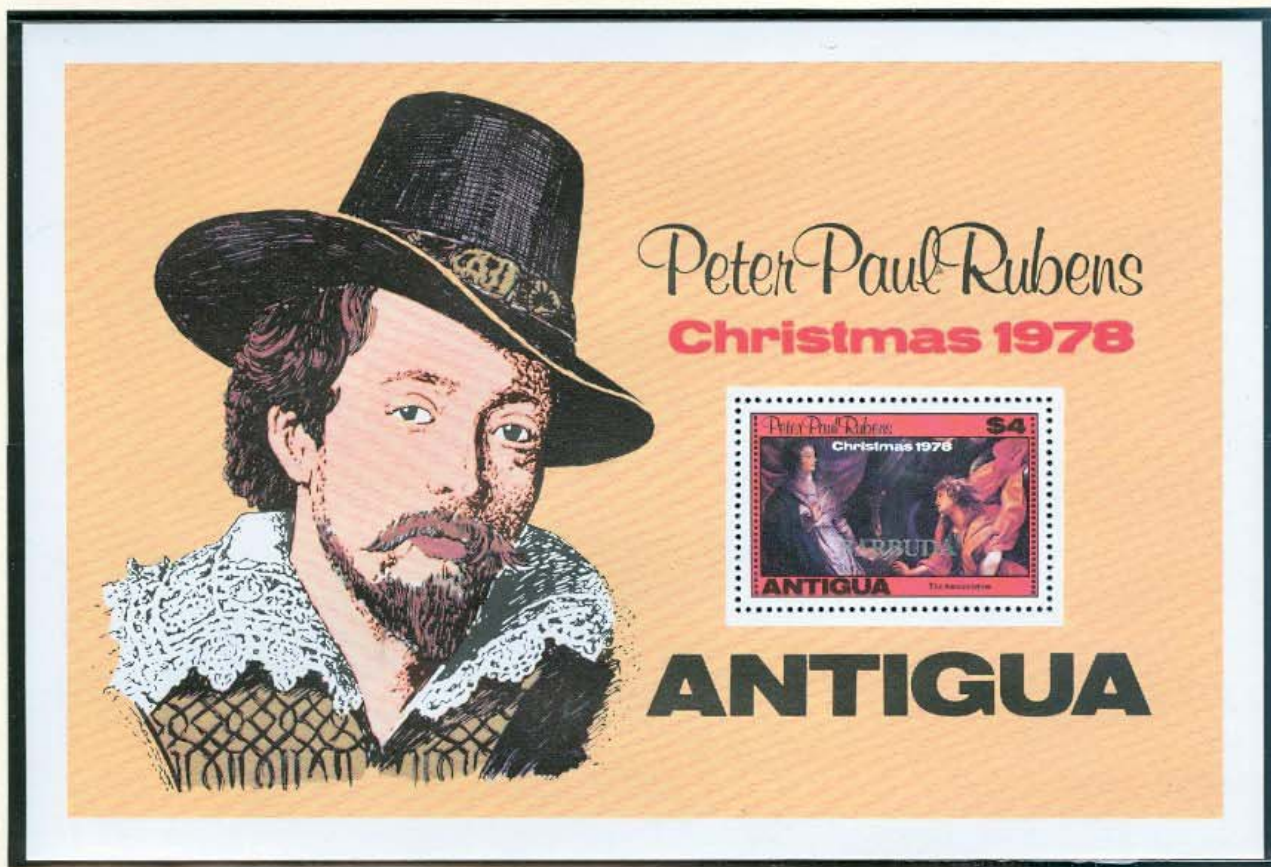
# BARBUDA

ISSUES OF 1978





1978





1978





1978





1978





1978





1978





# BARBUDA

ISSUES OF 1978





1978-79





1978



SILVER JUBILEE OF H.M. QUEEN ELIZABETH II  
Commemorative Self Adhesive Stamps: 6 of 50c, 1 of \$5.

**ANTIGUA**

**BARBUDA**



Photo: Press Association



1978





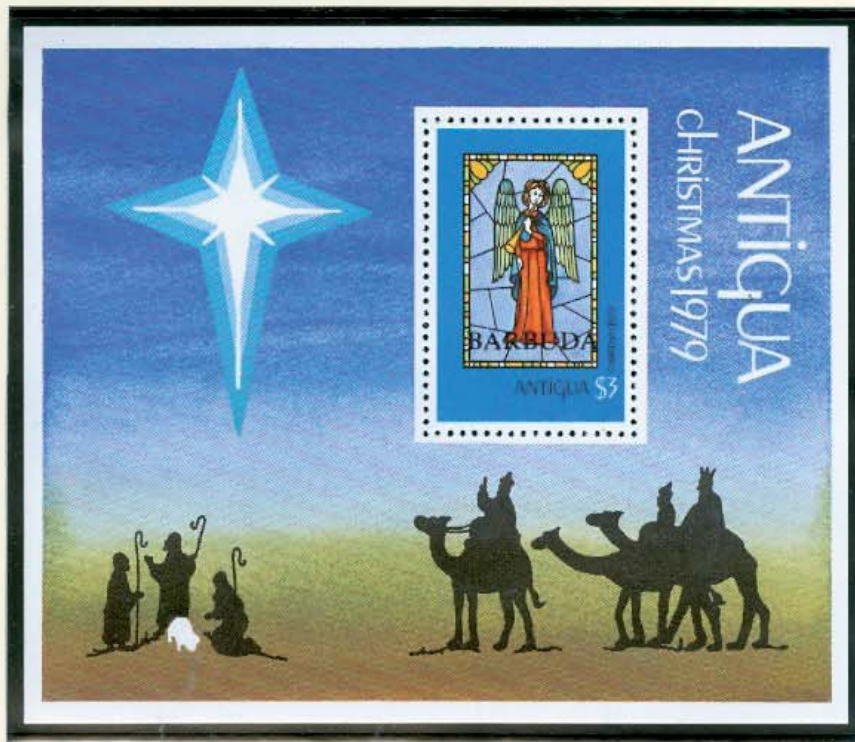
# BARBUDA

ISSUE OF 1979





1979





1979



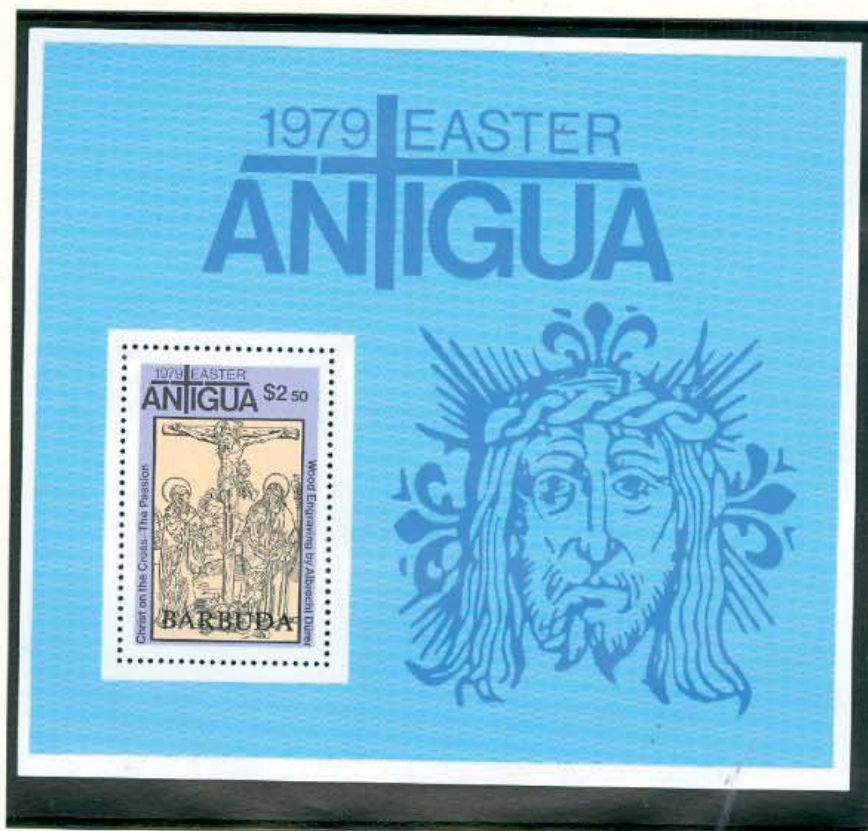


1979





1979





# BARBUDA

ISSUES OF 1979





1979





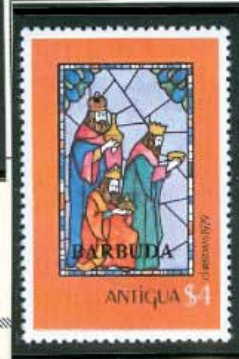
1979





1979

# BARBUDA





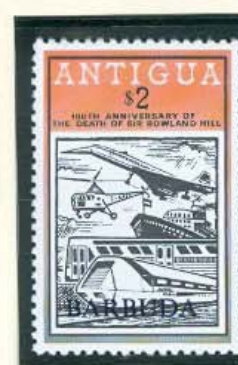
1979





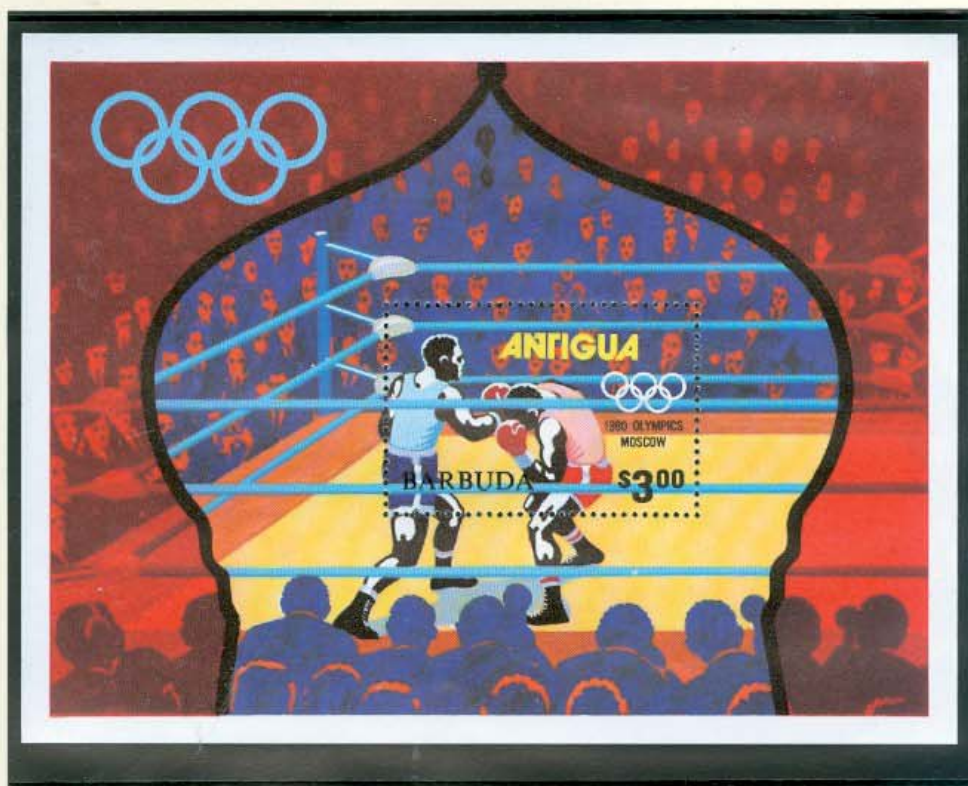
# BARBUDA

ISSUES OF 1978-80





1980





1980





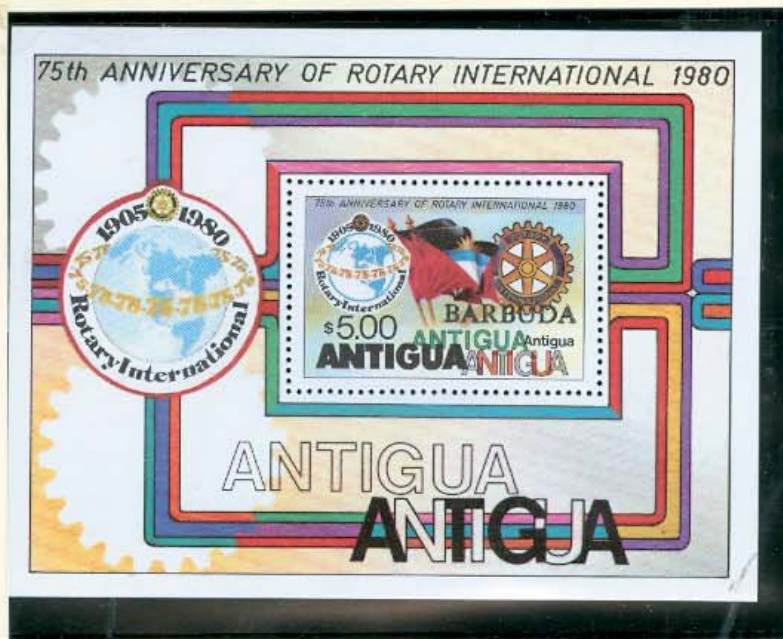
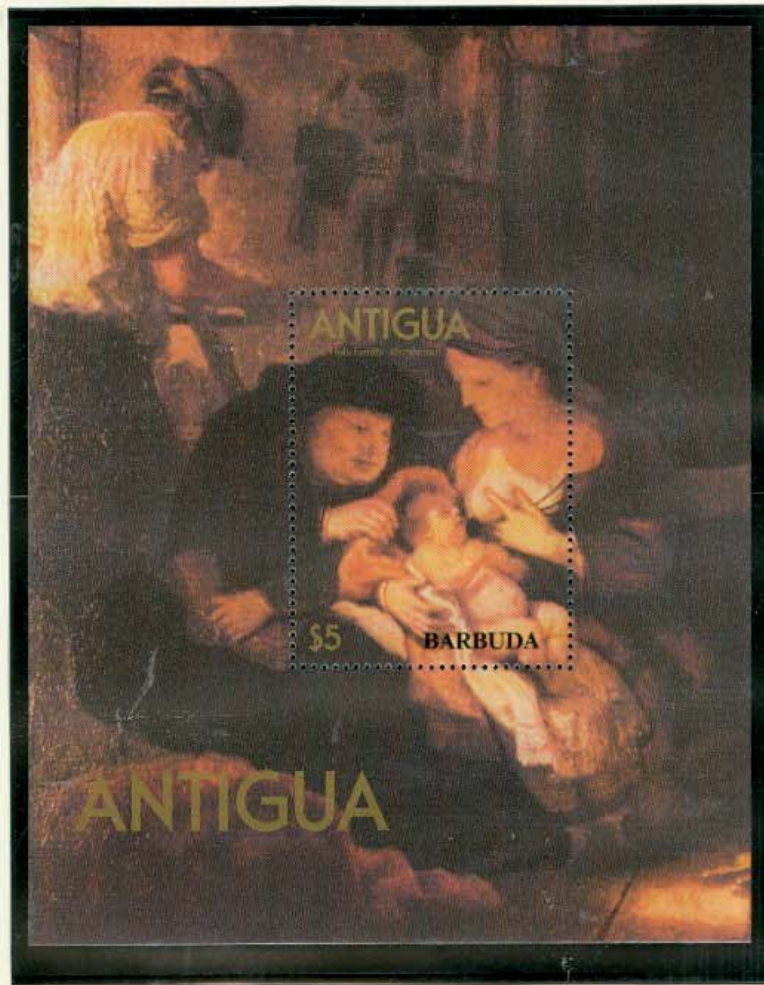
# BARBUDA

ISSUES OF 1980





1980





# BARBUDA

ISSUES OF 1981





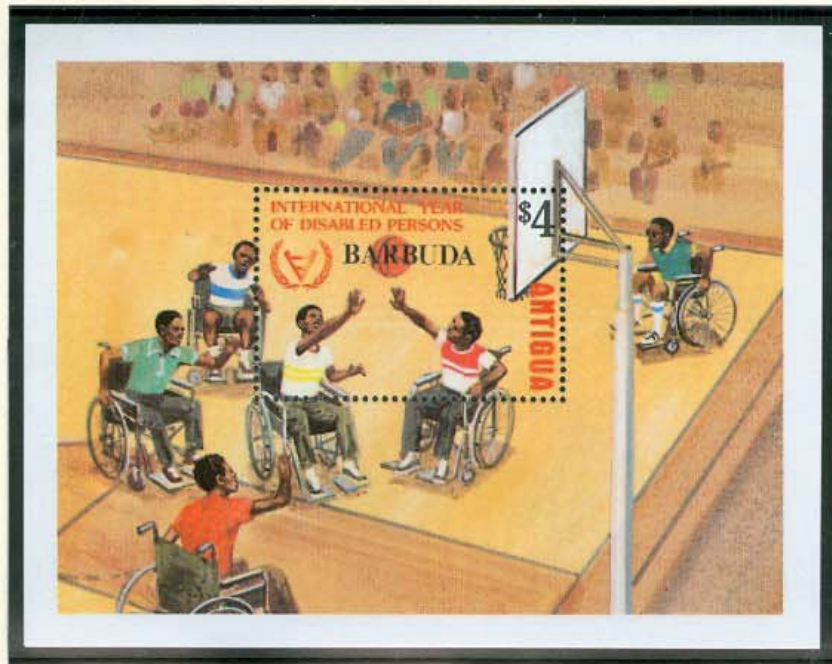
# BARBUDA

ISSUES OF 1981





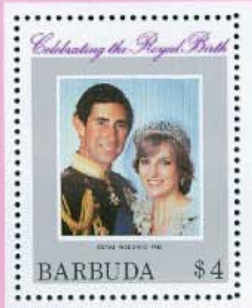
1981





1981

# BIRTH OF ROYAL BABY





1981





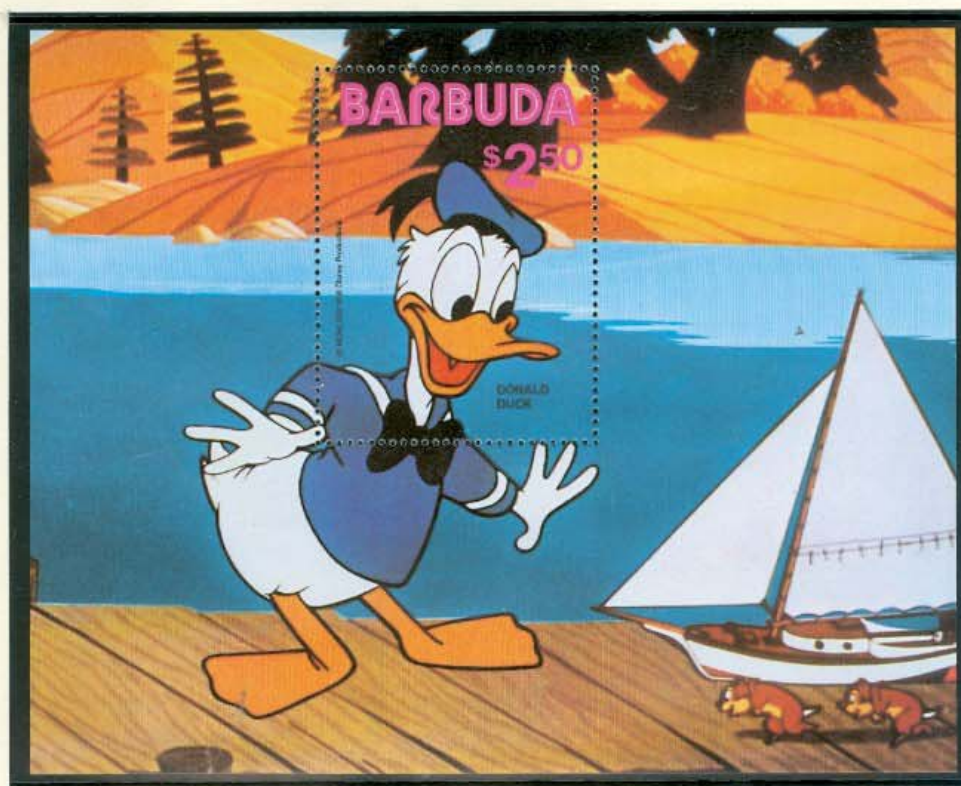
# BARBUDA

ISSUES OF 1981



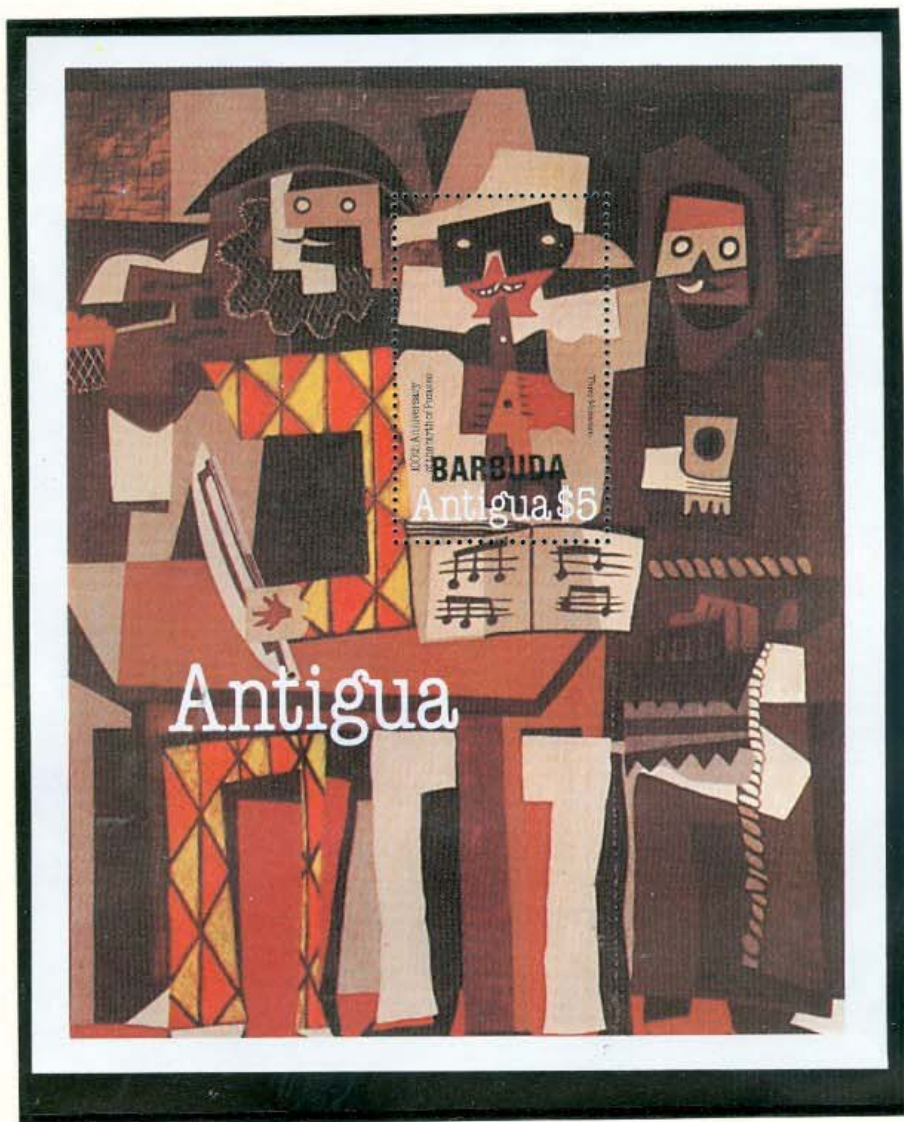


1981



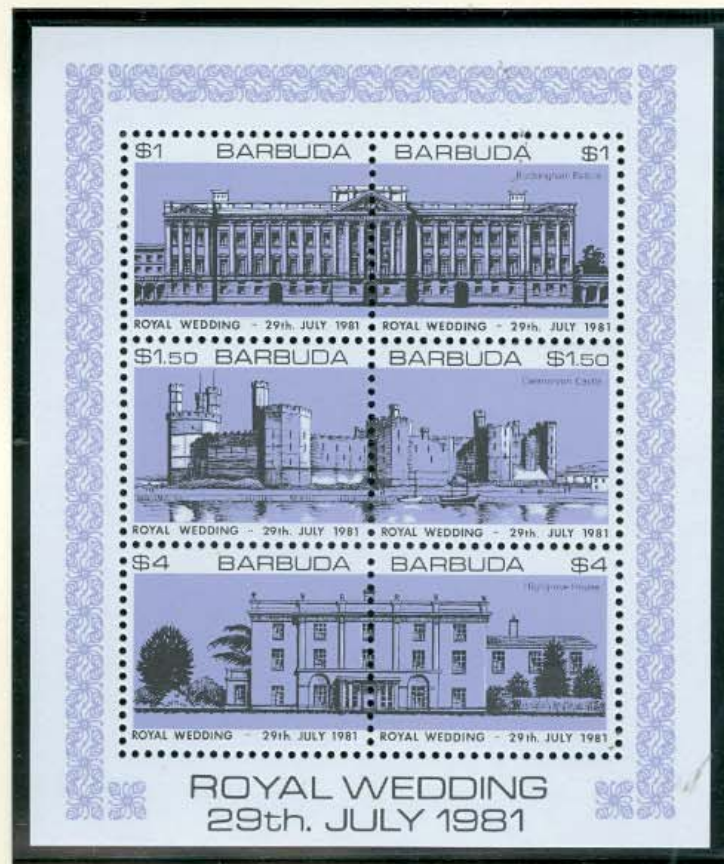
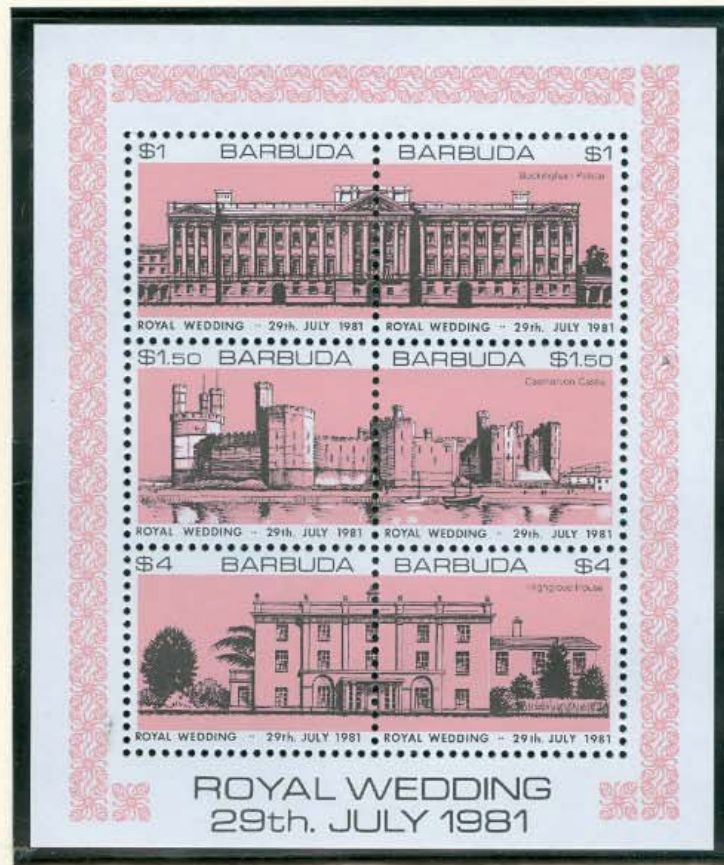


1981



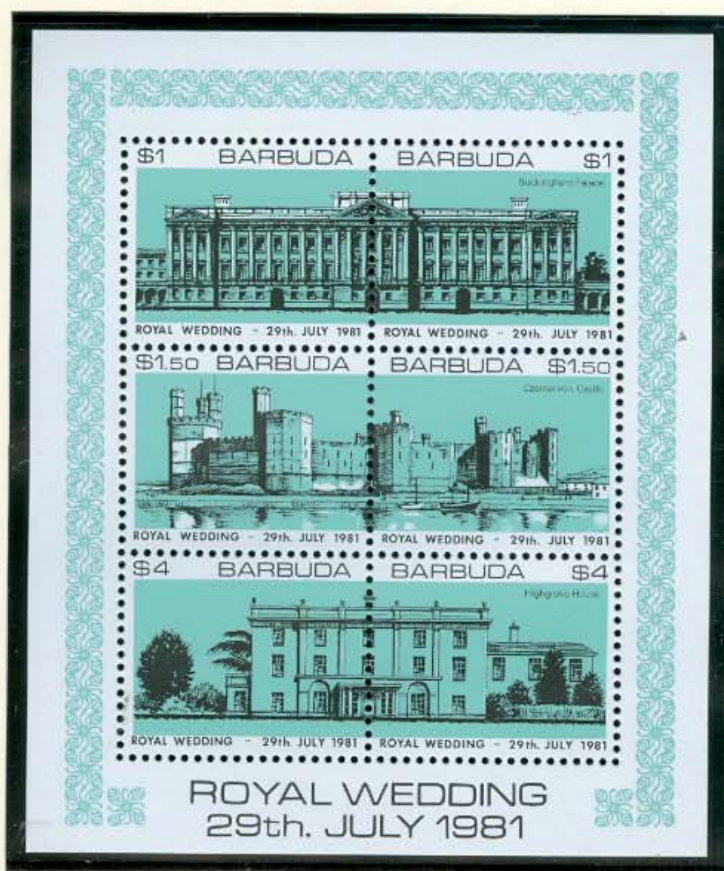


1981





1981





1981



ALTERNATE COLORS





# BARBUDA

ISSUES OF 1981-82





1984-82

Twenty First Birthday of  
H.R.H. The Princess of Wales



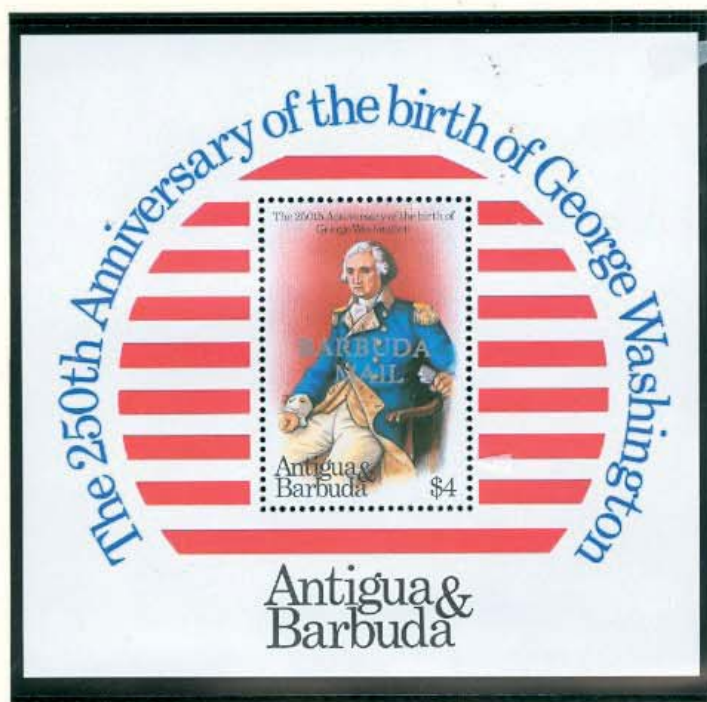


# BARBUDA

ISSUES OF 1981












1982

The 21st Birthday of HRH The Princess of Wales  
LINES OF DESCENT

HRH The Princess of Wales  
**ANTIGUA & BARBUDA**  
1st July 1982

The 21st Birthday of HRH The Princess of Wales  
LINES OF DESCENT

HRH The Princess of Wales  
**ANTIGUA & BARBUDA**  
1st July 1982



# BARBUDA

ISSUES OF 1982-83





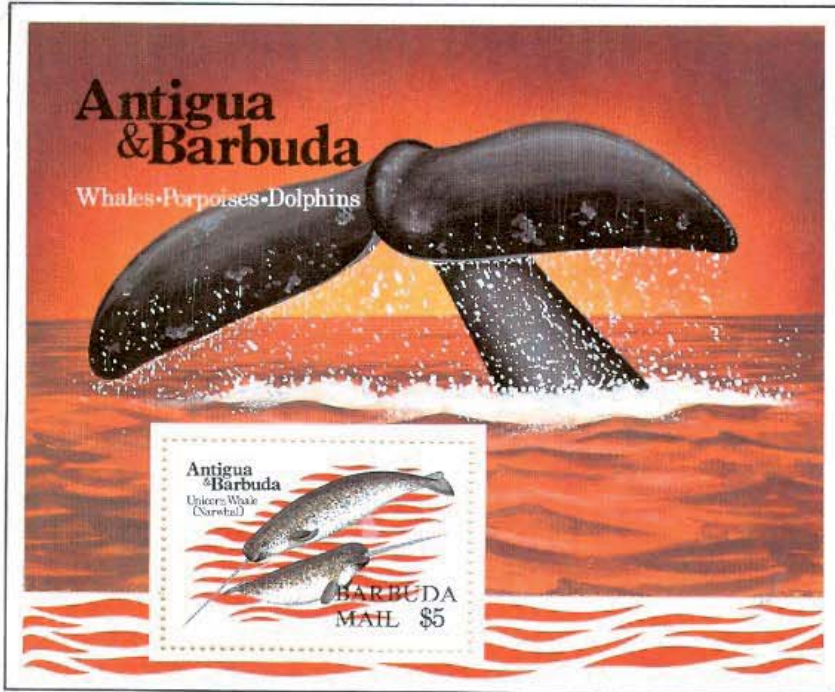
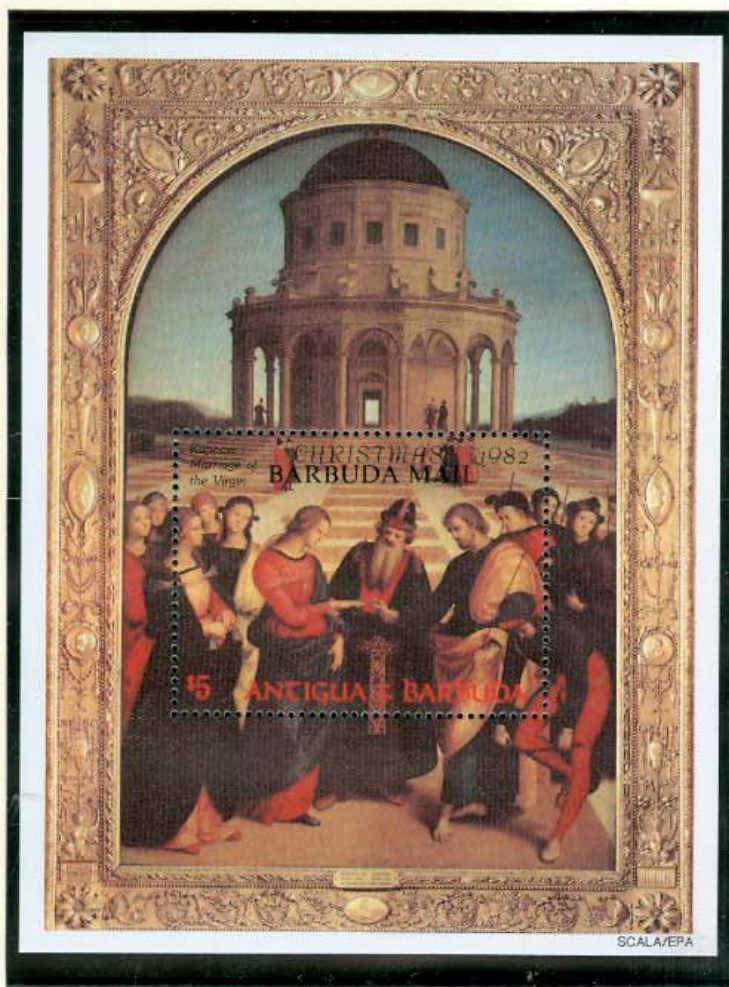
# BARBUDA

ISSUES OF 1982-83





1982-83





SEMI POSTAL

1982-95

B1



B3





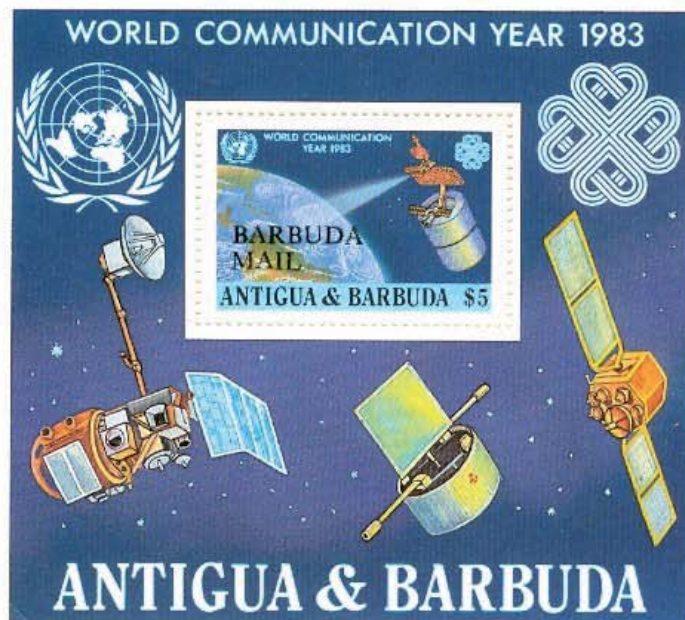
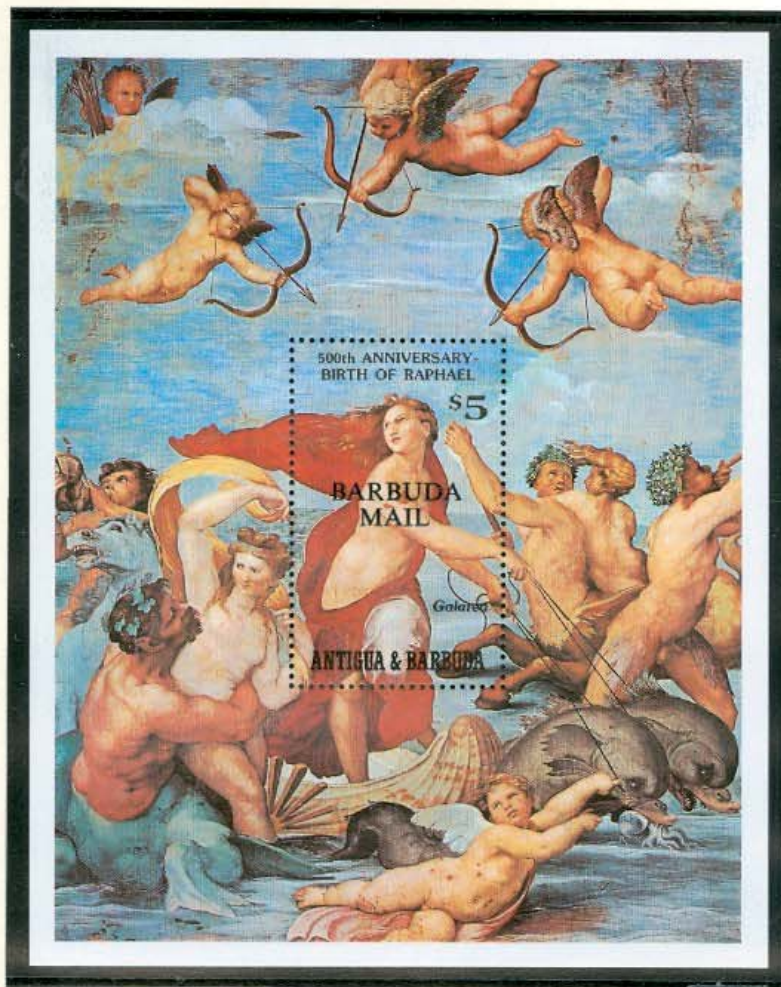
# BARBUDA

ISSUES OF 1983



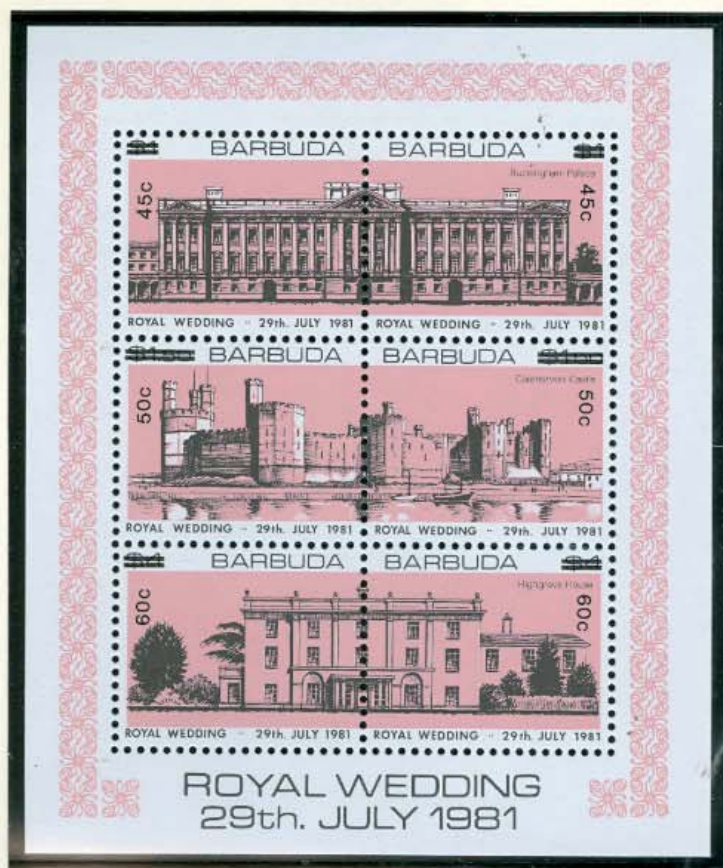
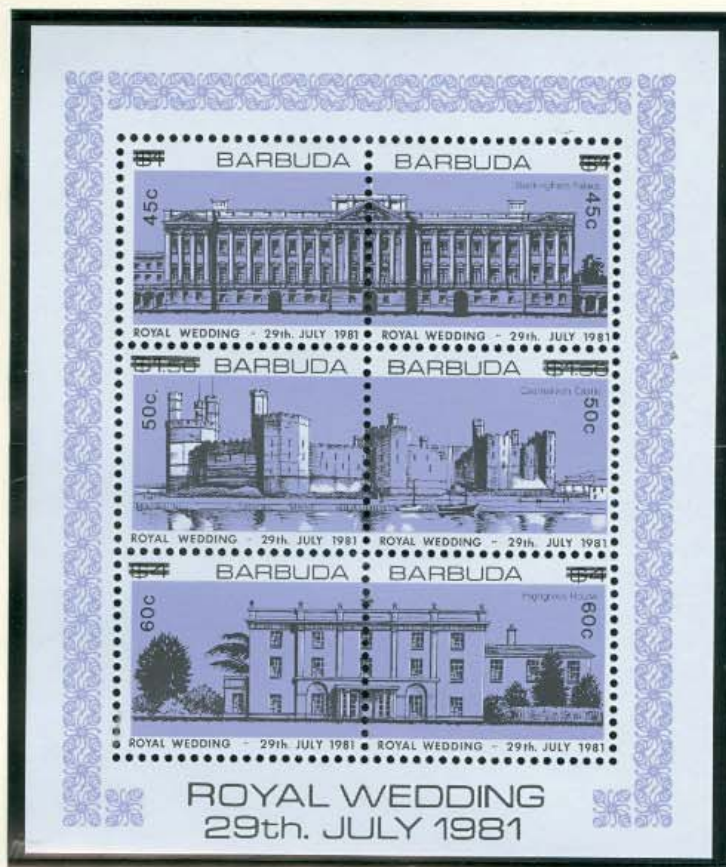


1983





1983



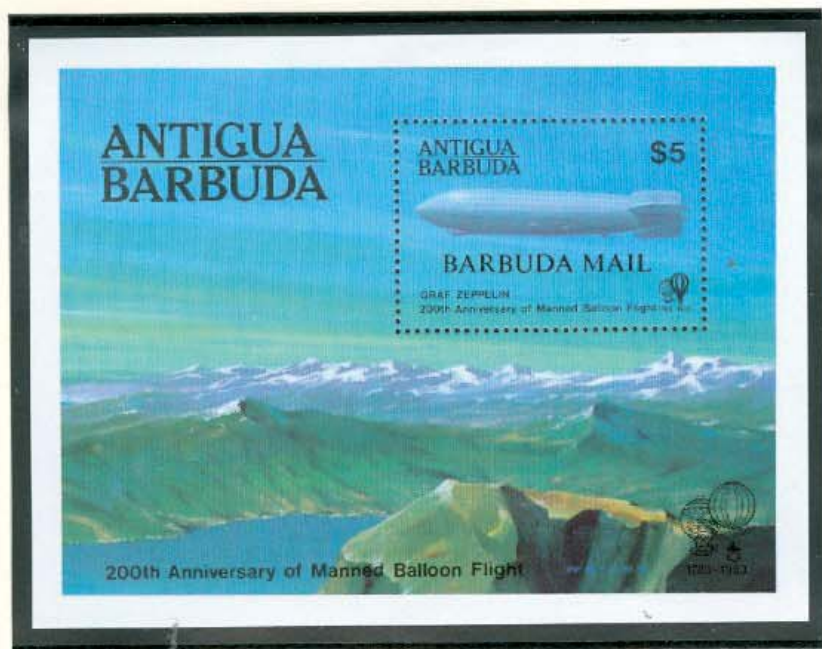


1983





1983





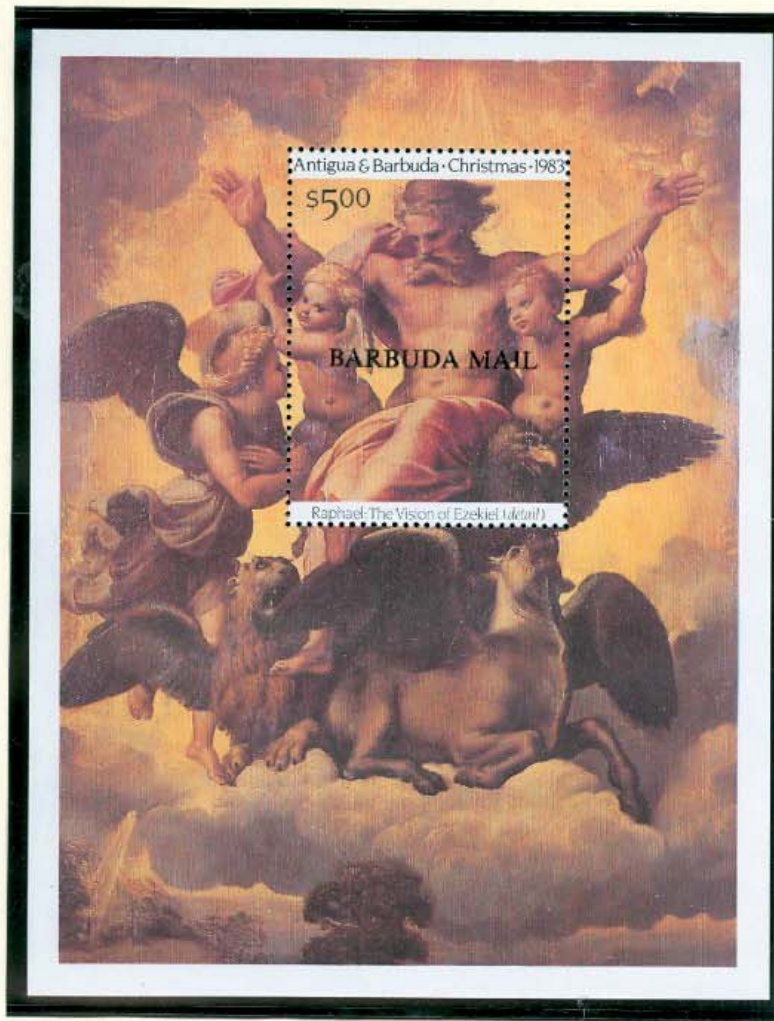
# BARBUDA

ISSUES OF 1983





1983





# BARBUDA

ISSUES OF 1983-84





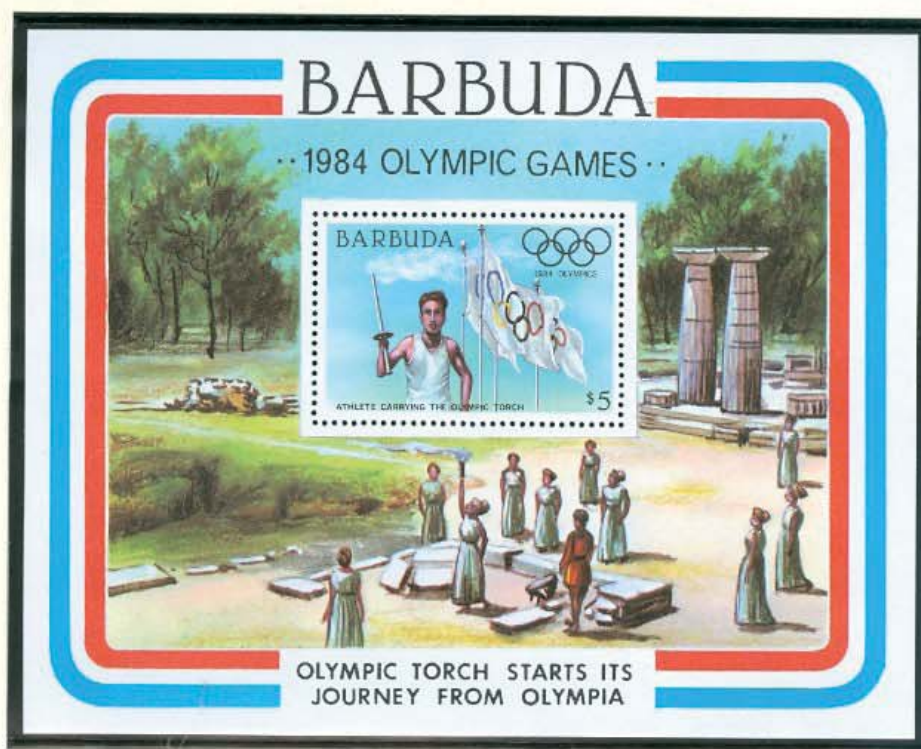
# BARBUDA

ISSUES OF 1984



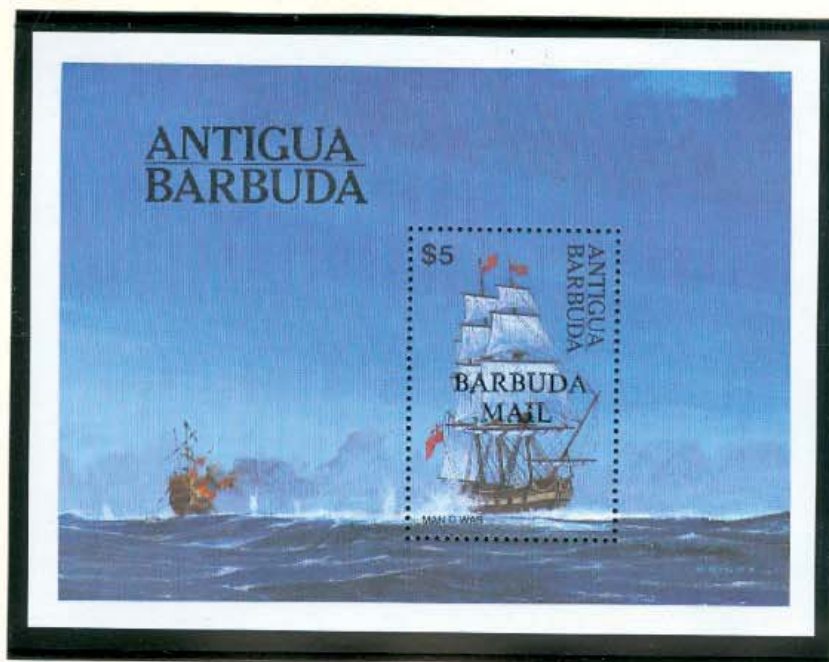


1984





1984





# BARBUDA

ISSUES OF 1984



658 55





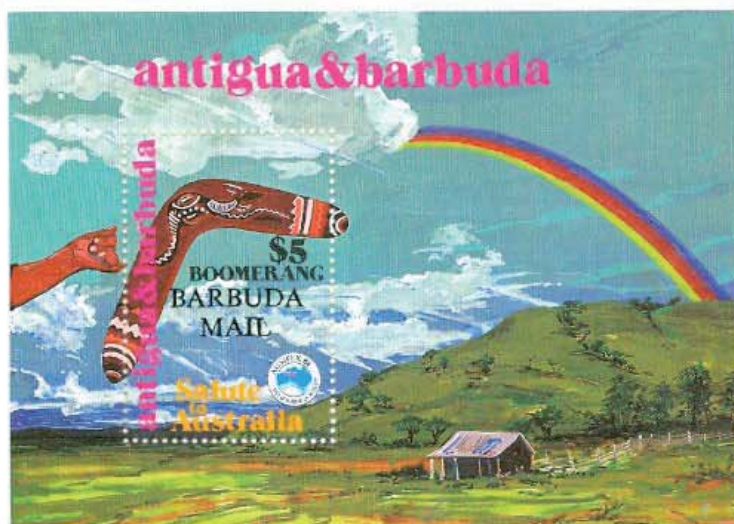
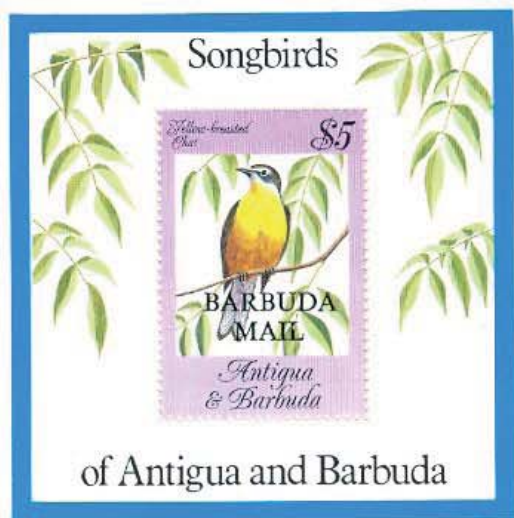
# BARBUDA

ISSUES OF 1984





1984





# BARBUDA

ISSUES OF 1985





# BARBUDA

ISSUES OF 1985

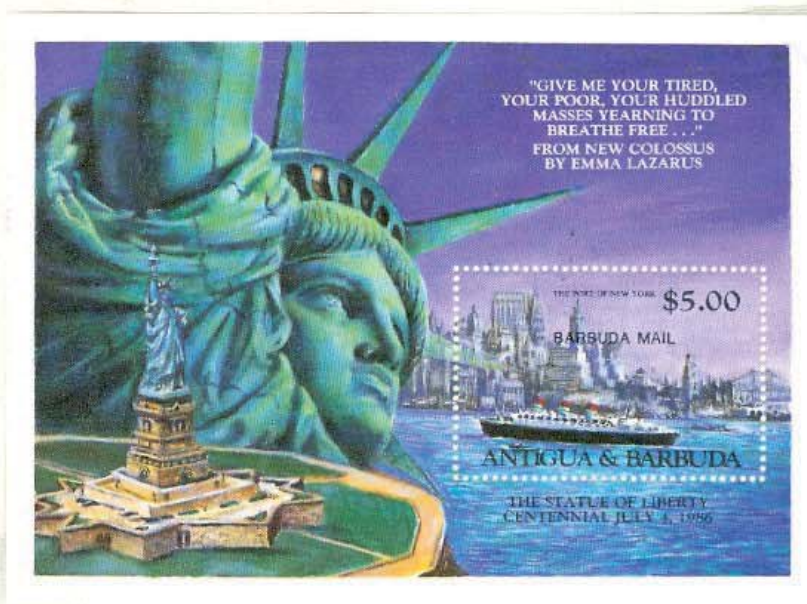
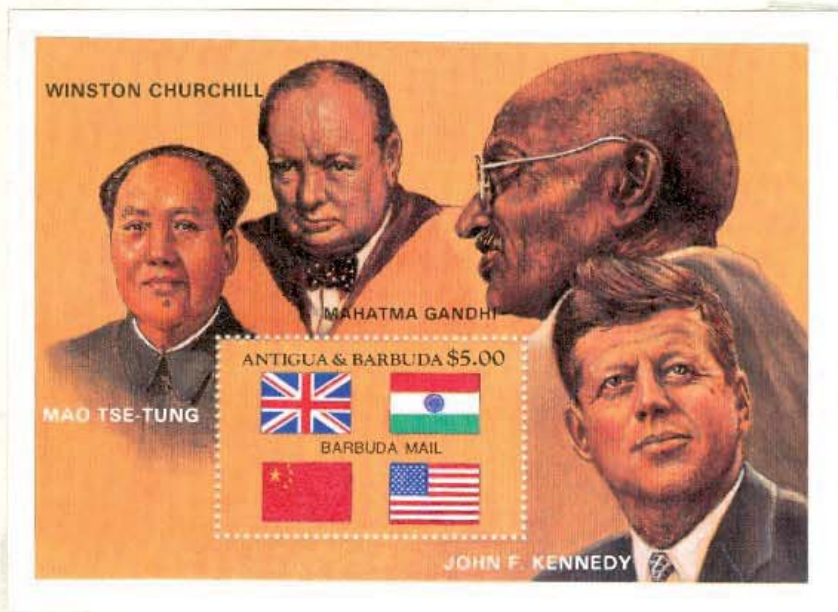


723 55





BARBUDA  
1985





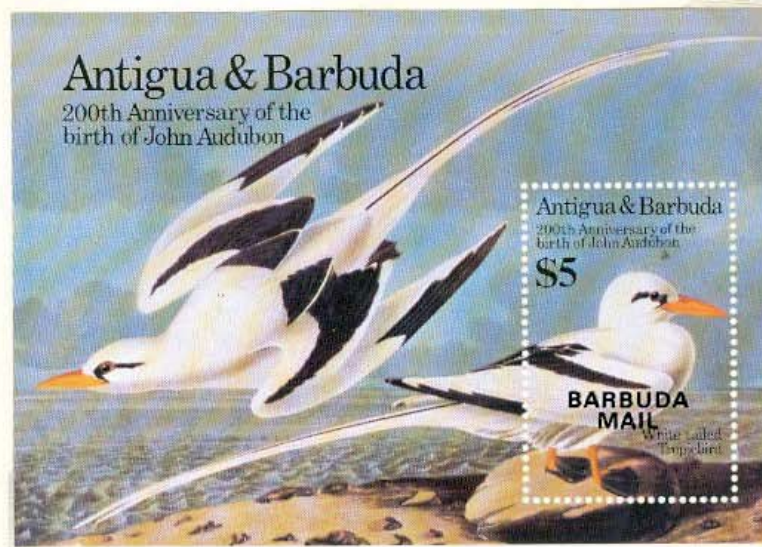
# BARBUDA

ISSUES OF 1985



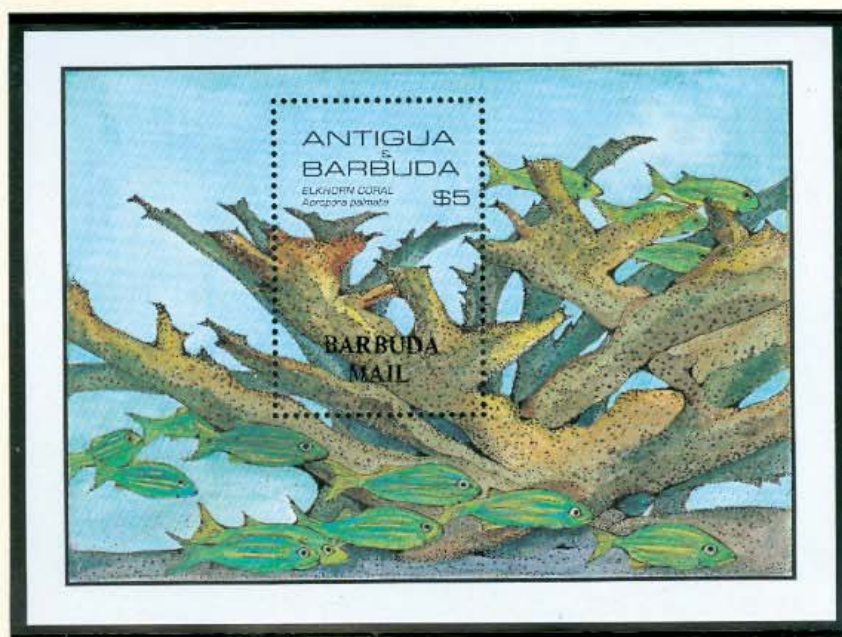


BARBUDA  
1985





1985





# BARBUDA

ISSUES OF 1985



747 55



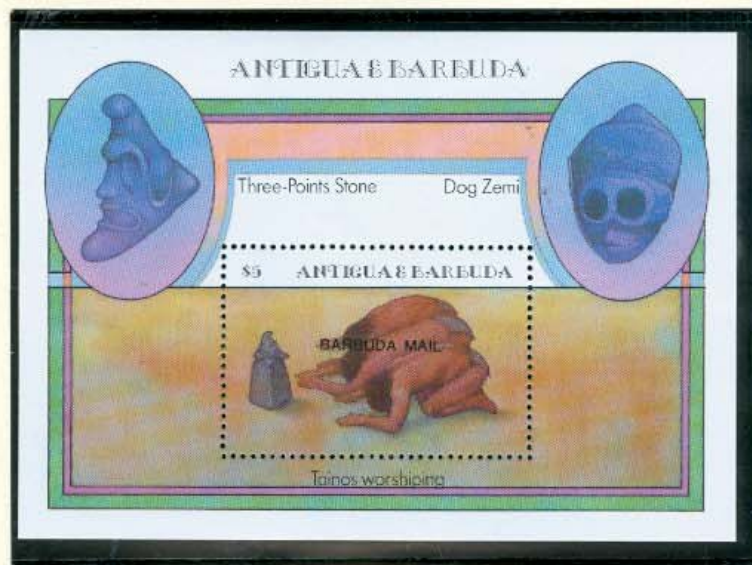
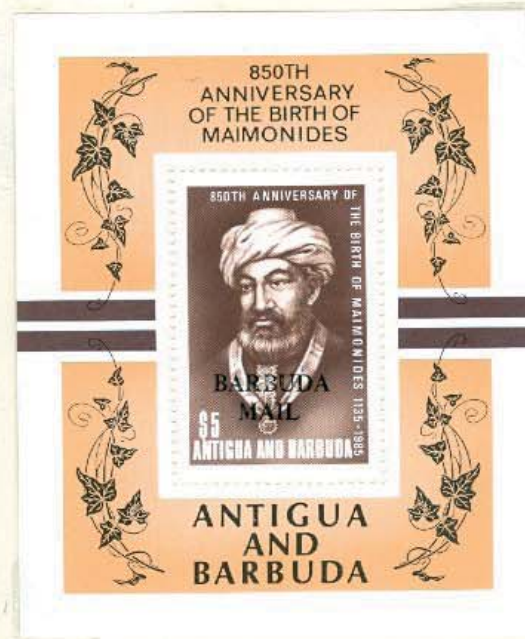
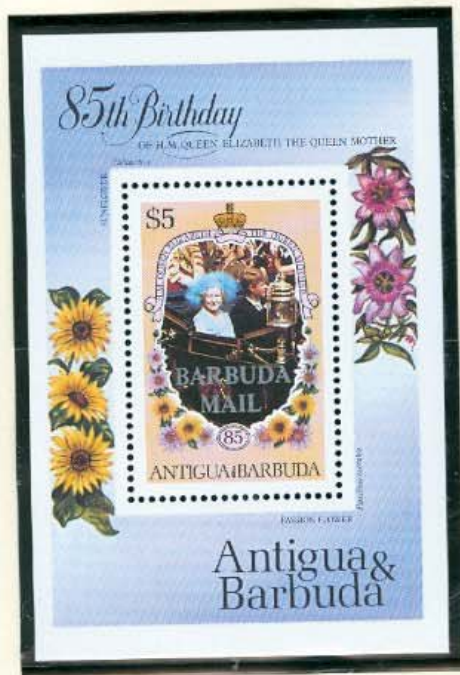


1985





1985-86





# BARBUDA

ISSUES OF 1985-86





1985





# BARBUDA

ISSUES OF 1986



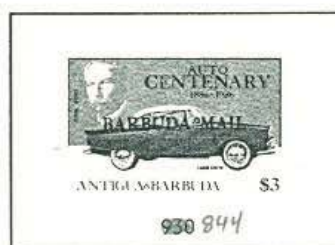
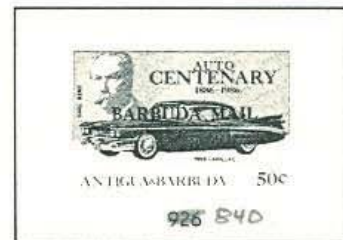
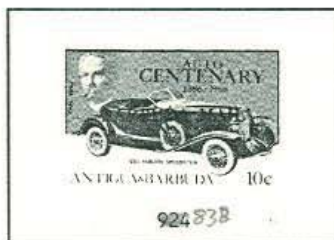
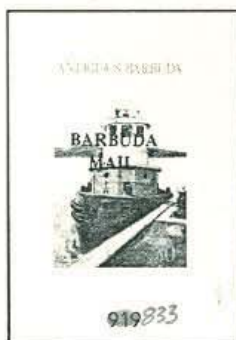


# BARBUDA

ISSUES OF 1986

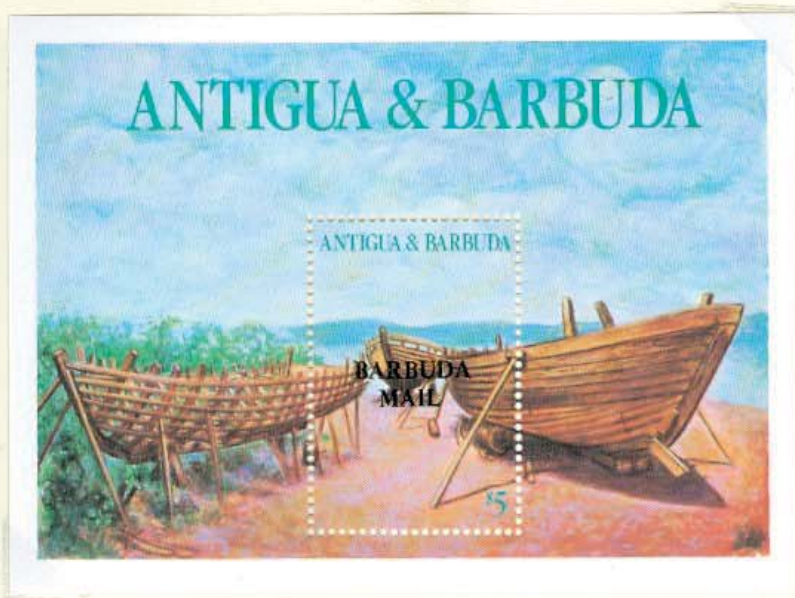


786 55





BARBUDA  
1986





1986





1986





# BARBUDA

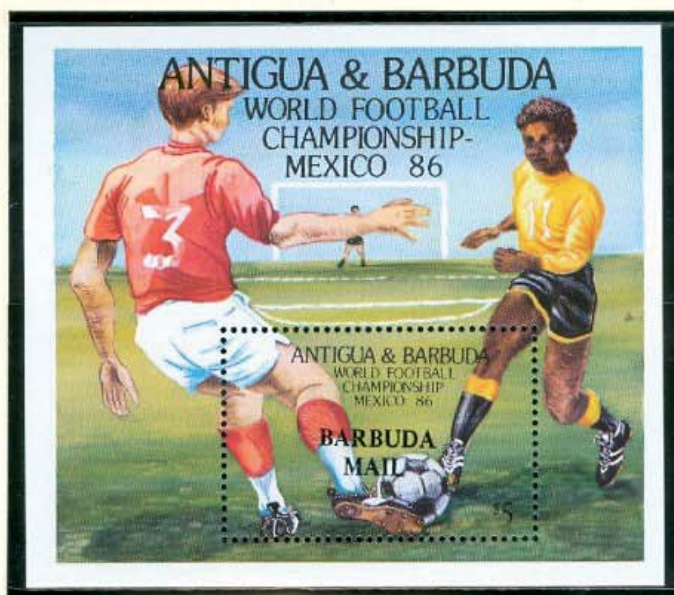
ISSUES OF 1986



808 52



1986





# BARBUDA

ISSUES OF 1986



890 787



891 788



892 789

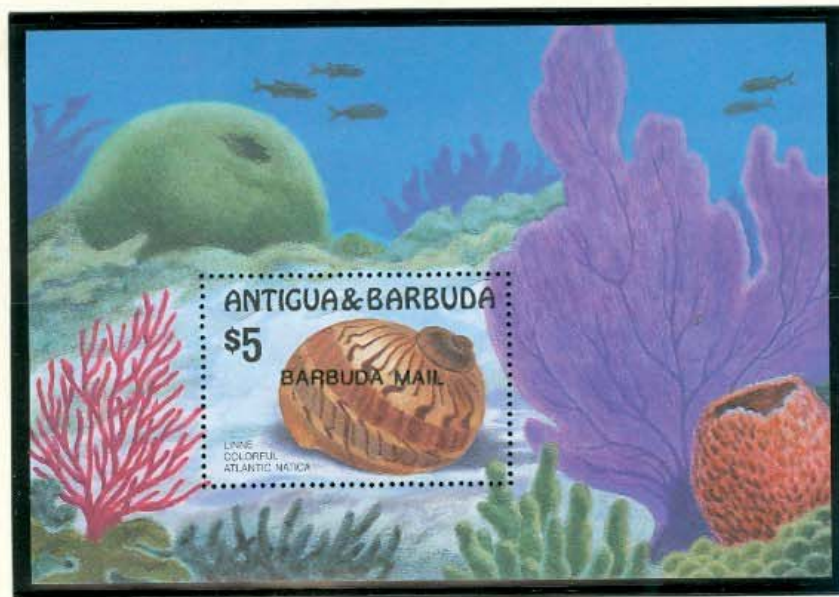


893 792





1986





# BARBUDA

ISSUES OF 1986



904 818



905 819



906 820



907 821



908 822



909 823



910 824



911 825



914  
828



915  
829



916  
830



917  
831

832



# BARBUDA

ISSUES OF 1986-1987



79855



865-655

Note: Barbuda Mail stamps not available; stamps identical to Antigua except for overprint.



BARBUDA  
1986





1987





# BARBUDA

ISSUES OF 1987





# BARBUDA

ISSUES OF 1987



960 867



961 868



962 869



963 870



964 871



965 872



966 873



967 874



968 875



969 876



# BARBUDA

ISSUES OF 1987





# BARBUDA

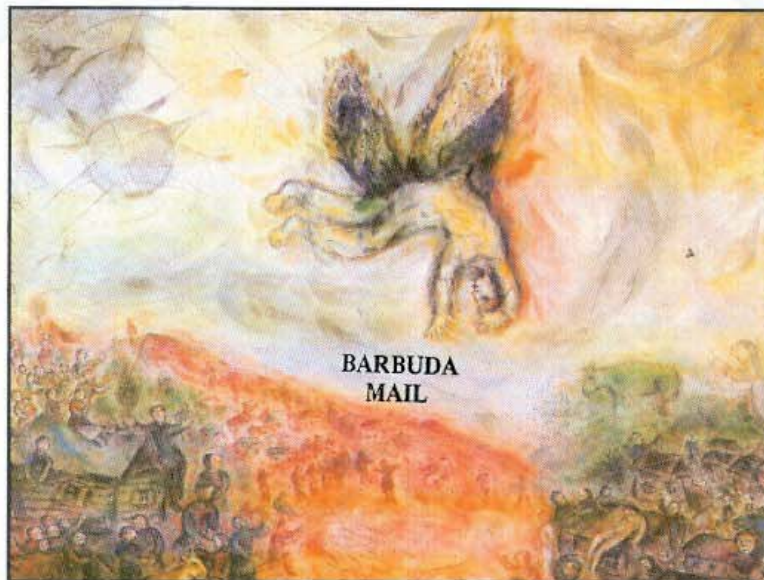
ISSUES OF 1987



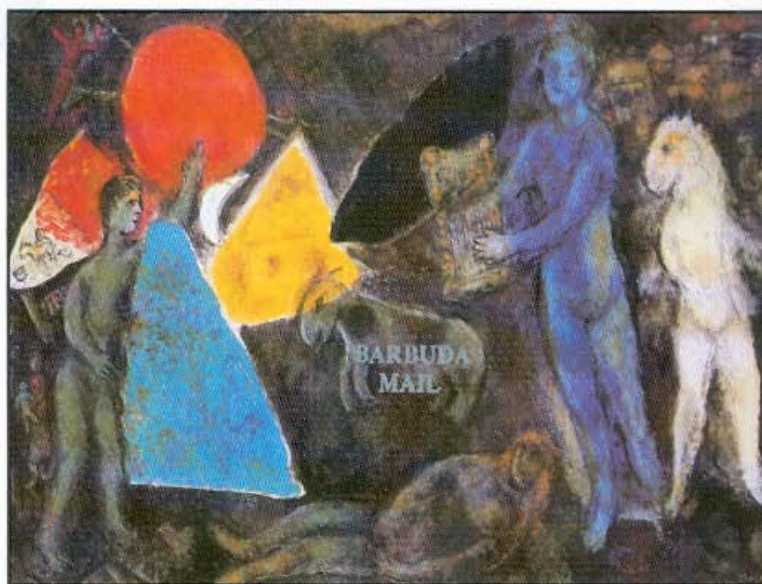
Note: Barbuda Mail stamps not available; stamps identical to Antigua except for overprint.



BARBUDA  
1987



ANTIGUA & BARBUDA FALL OF ICARUS \$5  
100TH ANNIVERSARY • CHAGALL



ANTIGUA & BARBUDA MYTH OF ORPHEUS \$5  
100TH ANNIVERSARY • CHAGALL



1987





# BARBUDA

ISSUES OF 1987



1017 924



1016 923



1018 925

92755



1019 926



1026 933



1027 934



1028 935



1029 936



1030 937



1031 938



1032 939



1033 940



# BARBUDA

ISSUES OF 1987



998 905



999 906



1000



1001



1004



1005



1002



1003



1007



1006 913



1008 915



1009 916



1010 917



1011 918



1012 919



1013 920



1014 921



1015 922



# BARBUDA

ISSUES OF 1988

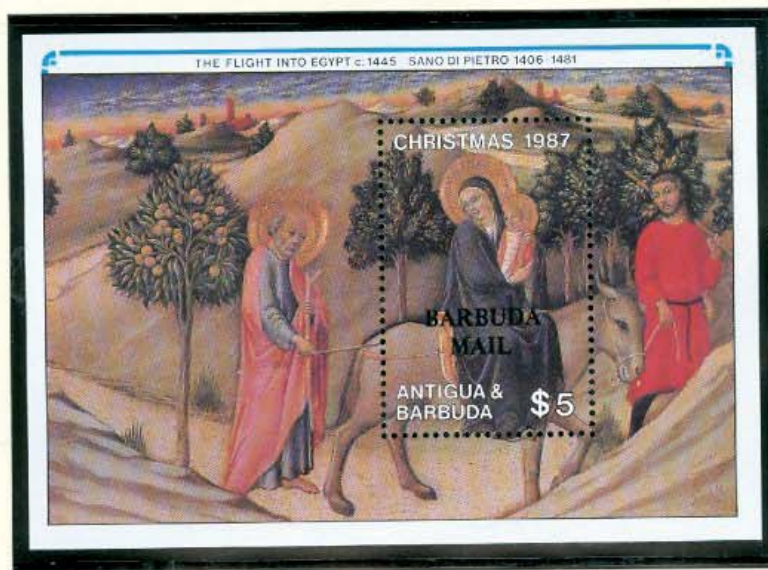


946 55





1988





# BARBUDA

ISSUES OF 1988



969-155

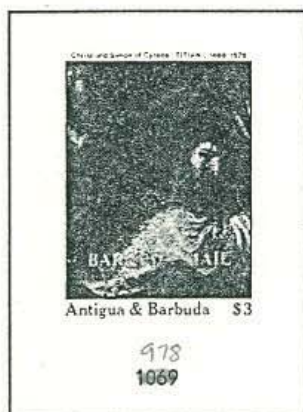
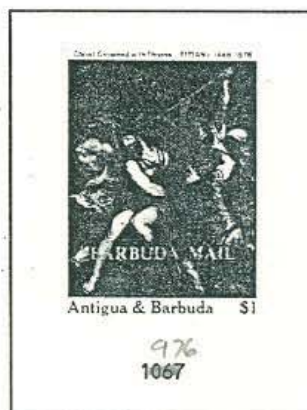


970-155



# BARBUDA

## ISSUES OF 1988



980-1 25



# BARBUDA

ISSUES OF 1988



991 55





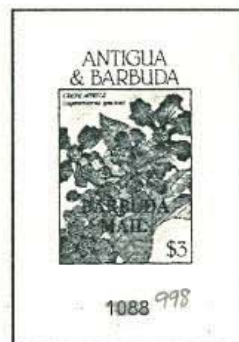
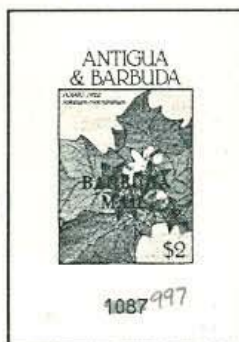
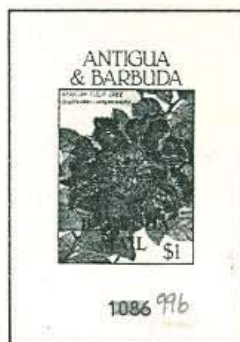
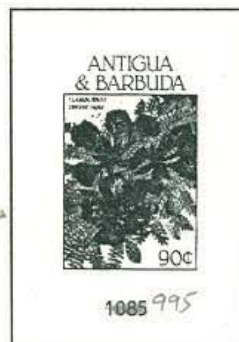
1988





# BARBUDA

ISSUES OF 1988-1989



1000-155





BARBUDA

1989





# BARBUDA

ISSUES OF 1989





# BARBUDA

ISSUES OF 1989



1045-6



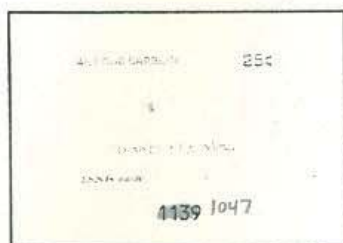






# BARBUDA

ISSUES OF 1989

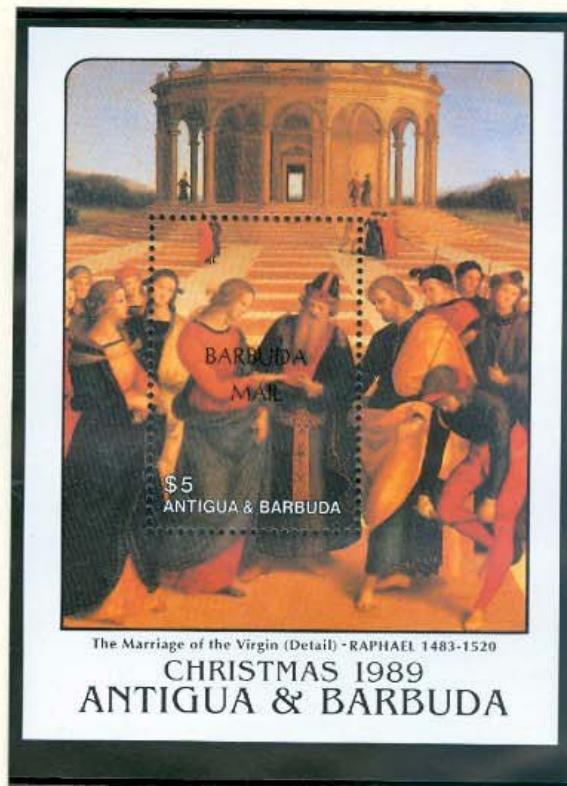
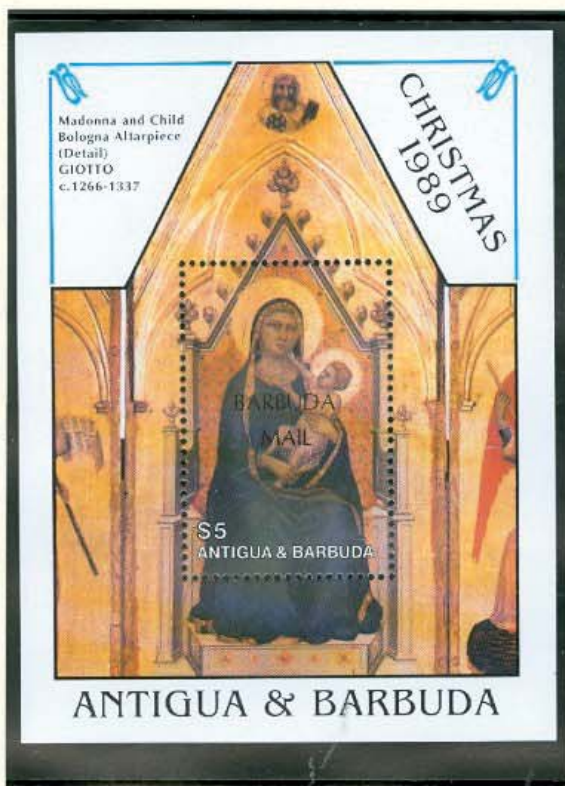


1055-655





1989





# BARBUDA

ISSUES OF 1989



1065-655



# BARBUDA

ISSUES OF 1990



1091-255



109755





1990





# BARBUDA

ISSUES OF 1990



1103  
1196



1104  
1197



1105  
1198



1106  
1199



1107  
1200



1108  
1201



1109  
1202



1110  
1203

1111-255



1206 1113



1207 1114



1208 1115



1209 1116



1210 1117



1211 1118



1212 1119



1213 1120

1121-2



# BARBUDA

ISSUES OF 1990

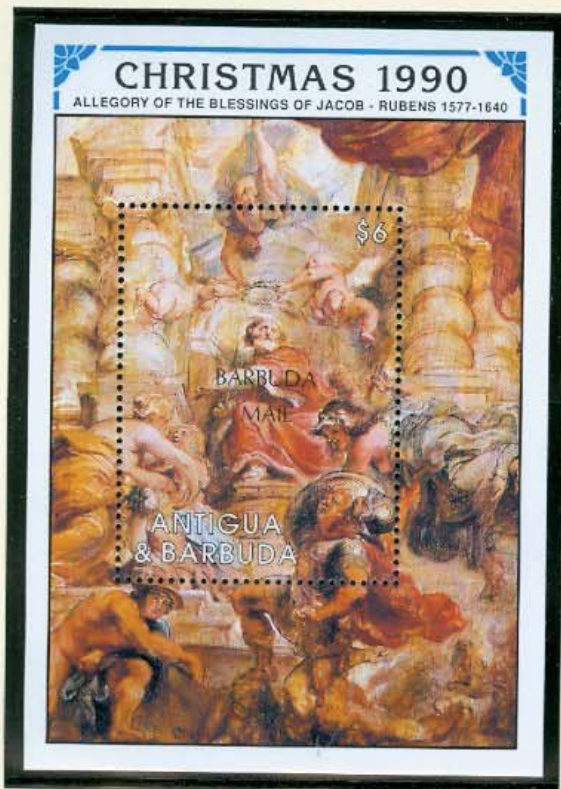


1131-2 55





1990





# BARBUDA

ISSUES OF 1990-1991



1154 55

1158 55



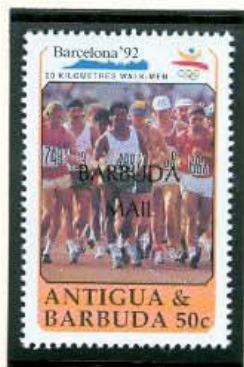
## ISSUES OF 1990-1991





# BARBUDA

ISSUES OF 1991



1207-8  
55





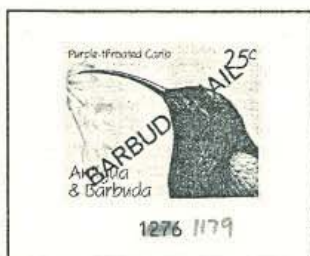
1991





# BARBUDA

ISSUES OF 1991



1186-751



1196-751



# BARBUDA

ISSUES OF 1991



1217-8 SS



1227-8  
SS

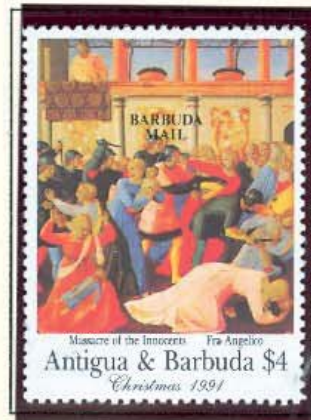
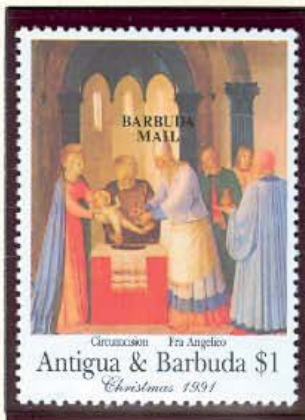
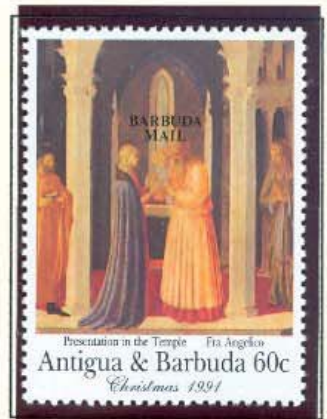
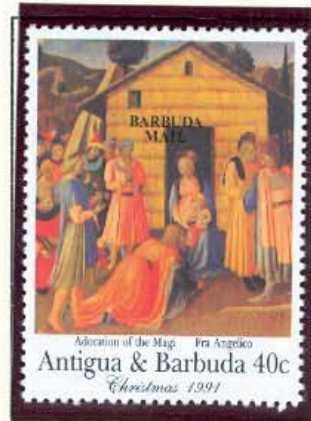


# BARBUDA

ISSUES OF 1991



123855





BARBUDA

1991





# BARBUDA

ISSUES OF 1992



1261-355



1992



1272-355



1282-355



BARBUDA

1992





BARBUDA

1992



129555

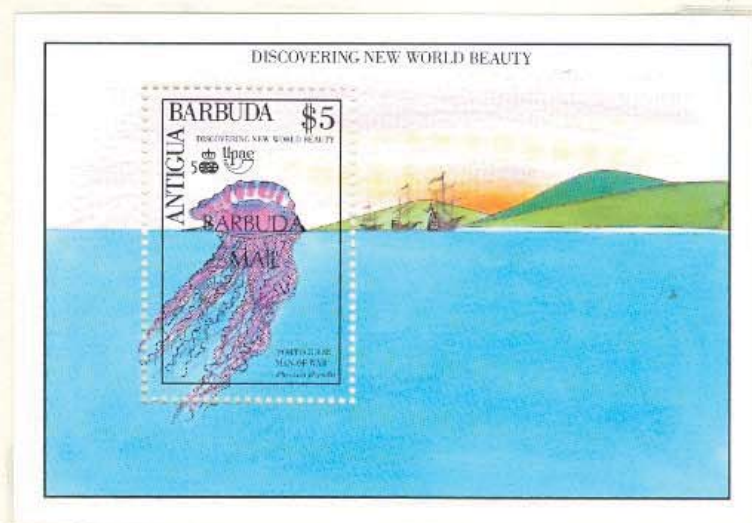
129555



130355



1992





BARBUDA

1992



1311 SS



1320-1 SS

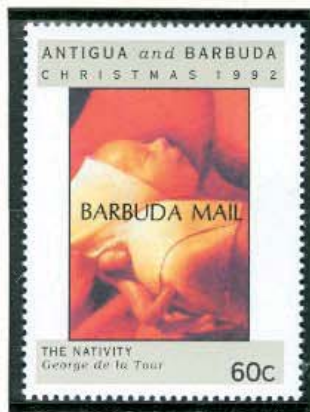
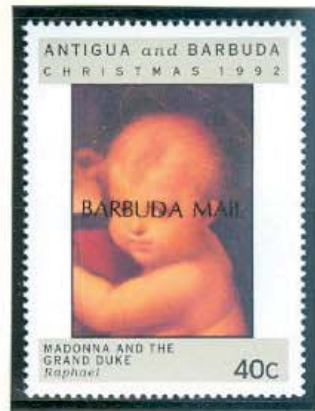


1992





BARBUDA  
1992-93



1330-155

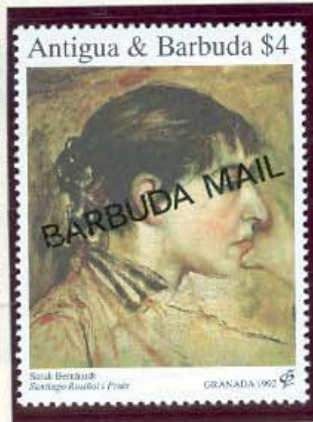


133255

1341-255



BARBUDA  
1993



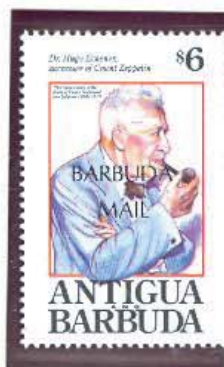
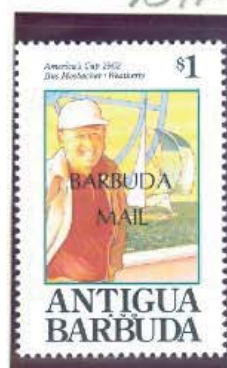
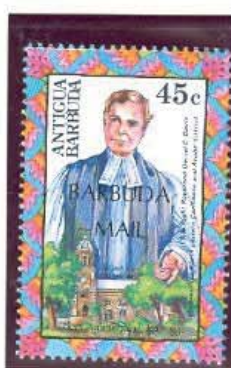
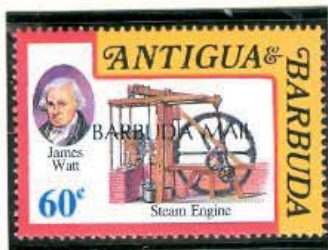
1351-255



1361-255



BARBUDA  
1993



1371-255

1387-9055



1993

# "ENDANGERED SPECIES"



Humpback Whales are one of eight species of whales on the endangered list.

1400a-d



BARBUDA  
1993-94



1399-140051



1416-755



1994

# PAINTINGS FROM THE LOUVRE



THE CAPTURE OF JULIUS  
RUBENS  
ANTIGUA & BARBUDA \$1



THE EXCHANGE OF PRINCESSES  
RUBENS  
ANTIGUA & BARBUDA \$1



THE HAPPINESS OF THE REGENCY  
RUBENS  
ANTIGUA & BARBUDA \$1



THE MAJORITY OF LOUIS XIII  
RUBENS  
ANTIGUA & BARBUDA \$1



Musée d' Louvre



THE FLIGHT FROM BLOIS  
RUBENS  
ANTIGUA & BARBUDA \$1



THE TREATY OF ANGOULÊME  
RUBENS  
ANTIGUA & BARBUDA \$1



THE PEACE OF ANGERS  
RUBENS  
ANTIGUA & BARBUDA \$1



THE QUEEN'S RECONCILIATION WITH HER SON  
RUBENS  
ANTIGUA & BARBUDA \$1

BICENTENNIAL 1793 – 1993

1401x55



# BARBUDA 1994



142055

143055



142455



142755

143255



143555

145855

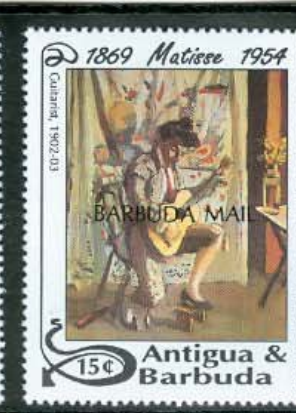




BARBUDA  
1994



1447-955



1454-55

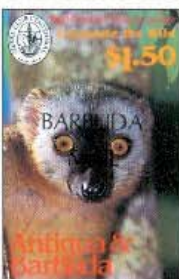
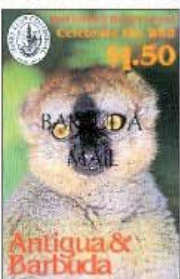
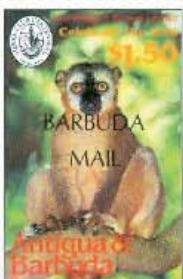
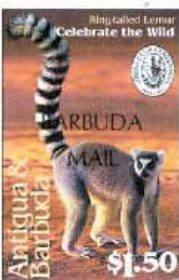
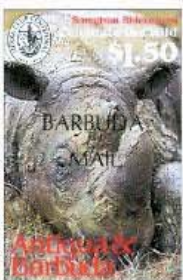
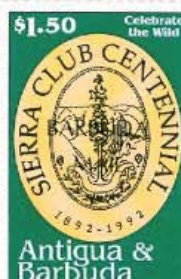
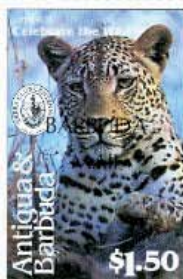
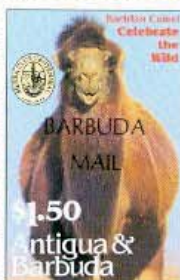
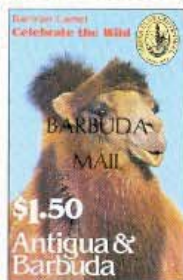


1455  
i-j  
55



BARBUDA

1994



1471-255



BARBUDA  
1994-95



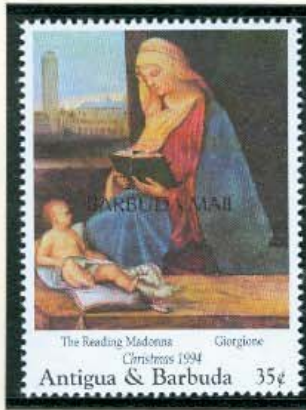
1467-855



1479-8055



BARBUDA  
1995



1996

1489-9055

1491-93



BARBUDA  
1995



1550

1552R-8 55

1523-4, 1526-7, 1529-30, 1531-2 55

1535-55, 1536-8, 1540 55

1544-5 55





# HONG KONG '94 February 18-21, 1994



Antigua & Barbuda 40c



Antigua & Barbuda 40c



Antigua & Barbuda 40c



Antigua & Barbuda 40c



Antigua & Barbuda 40c



Antigua & Barbuda 40c

Terra-Cotta Figures, Qin Dynasty



## PhilaKorea '94, Seoul, S. Korea Aug.16-25, 1994

Long-necked Bottle, Koryŏ dynasty



Antigua & Barbuda 75c

Jar, Punch'ong ware, Chosŏn dynasty



Antigua & Barbuda 75c

Jar, Punch'ong ware, Chosŏn dynasty



Antigua & Barbuda 75c

Jar in the form of Bamboo Shoot



Antigua & Barbuda 75c

Jar, Punch'ong ware, Chosŏn dynasty



Antigua & Barbuda 75c

Pear-shaped Bottle, Koryŏ dynasty



Antigua & Barbuda 75c

Jar, Porcelain, Chosŏn dynasty



Antigua & Barbuda 75c

Jar, Porcelain, Chosŏn dynasty

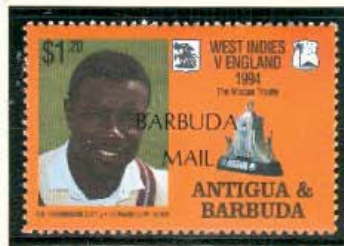


Antigua & Barbuda 75c

Ceramics, Chosŏn & Koryŏ Dynasty

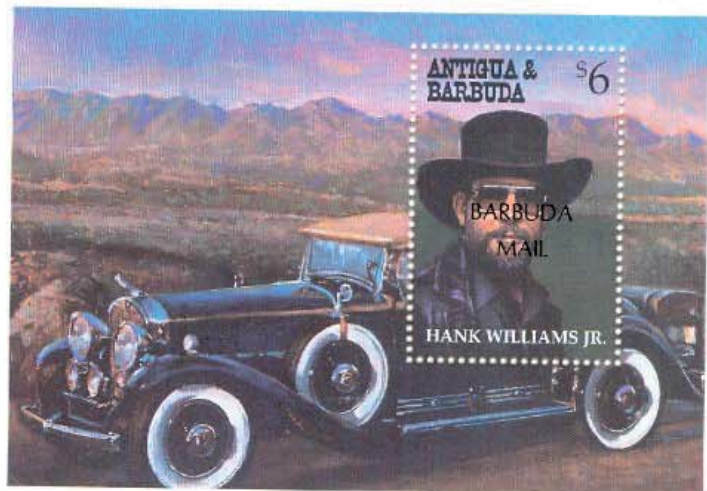
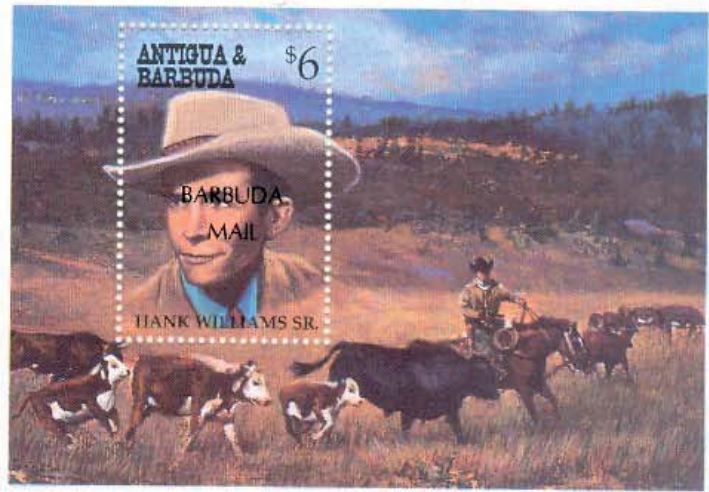
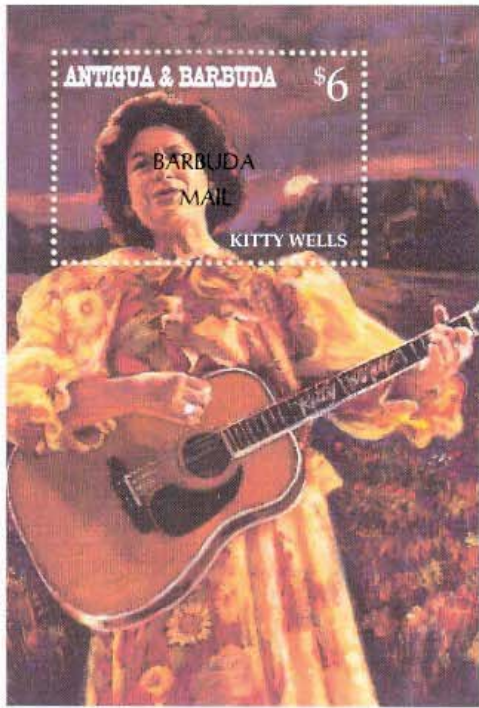


1995





BARBUDA  
1996





BARBUDA  
1996



1521-255

1497-1511

1512-455



BARBUDA  
1996

1553

1554

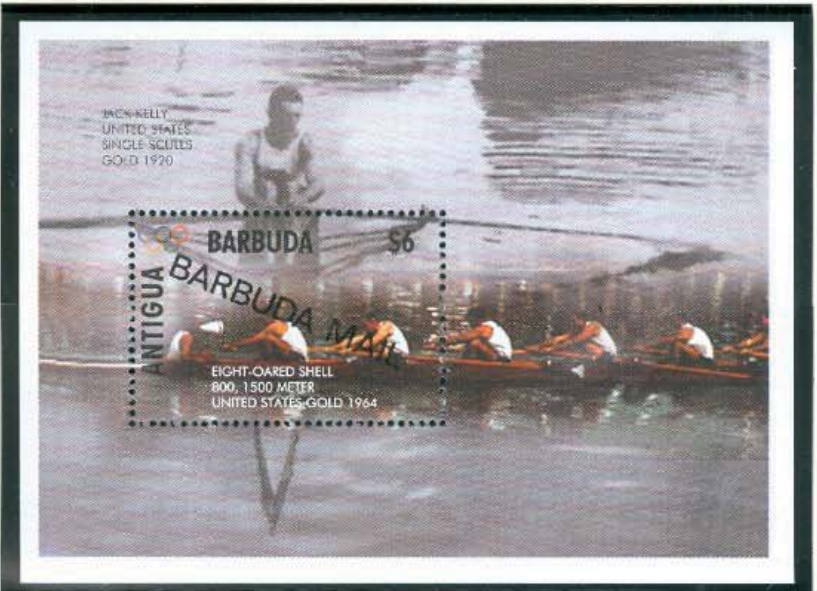
1555



1565-6655

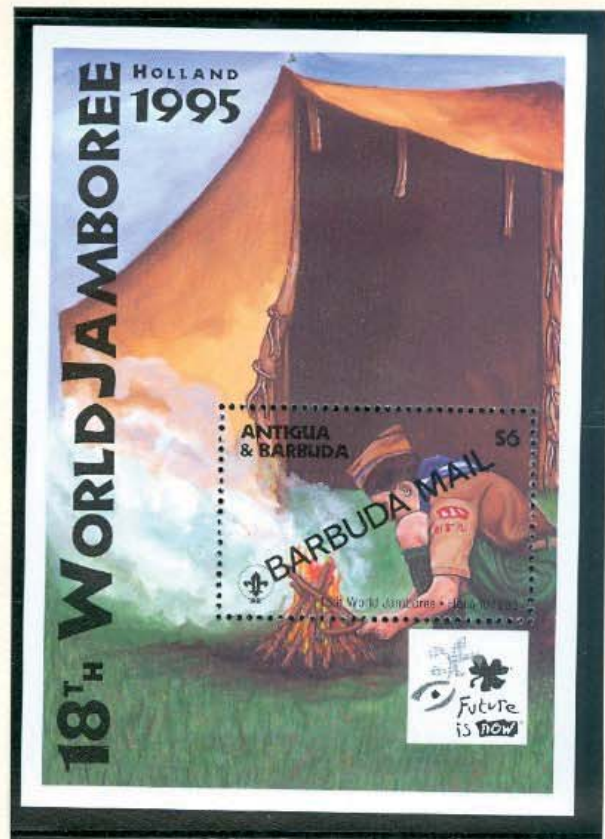


1996





1996



1579-82 55, 1583 (3), 1584 55



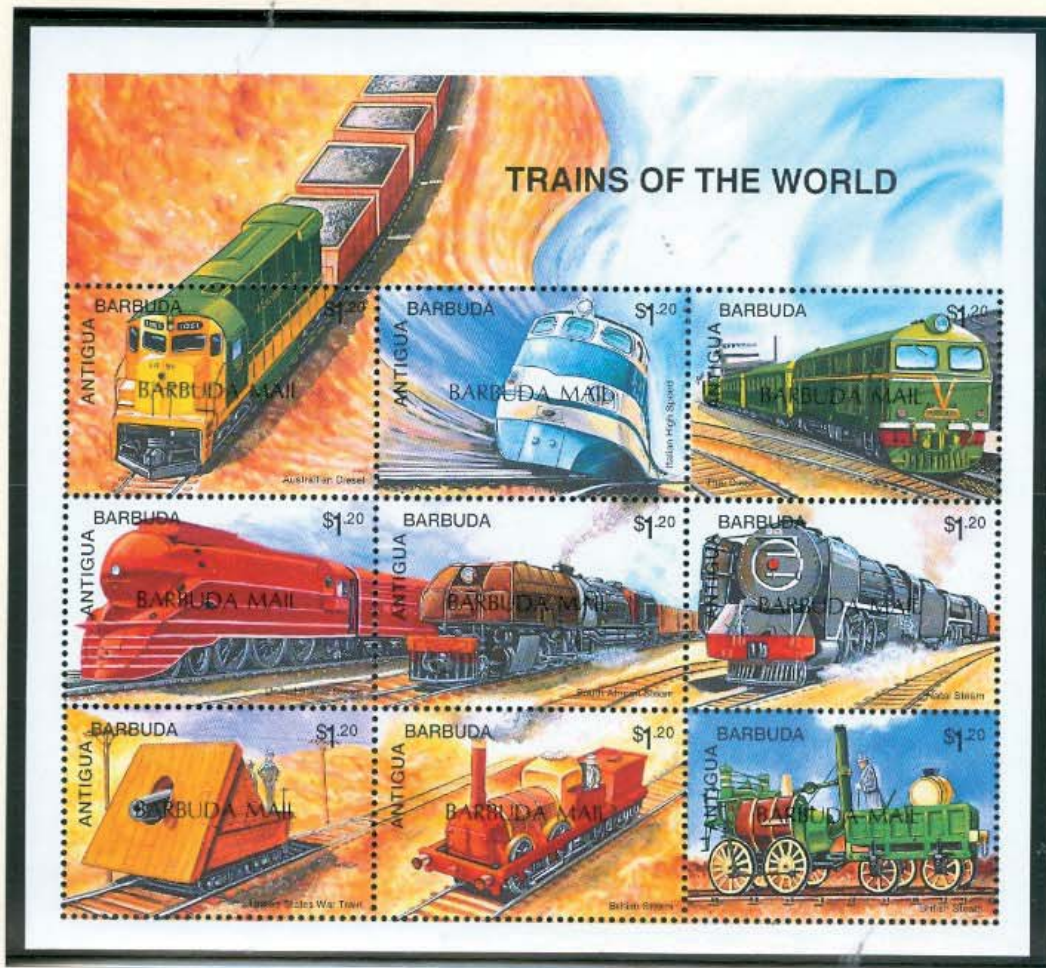
1997



1591-255

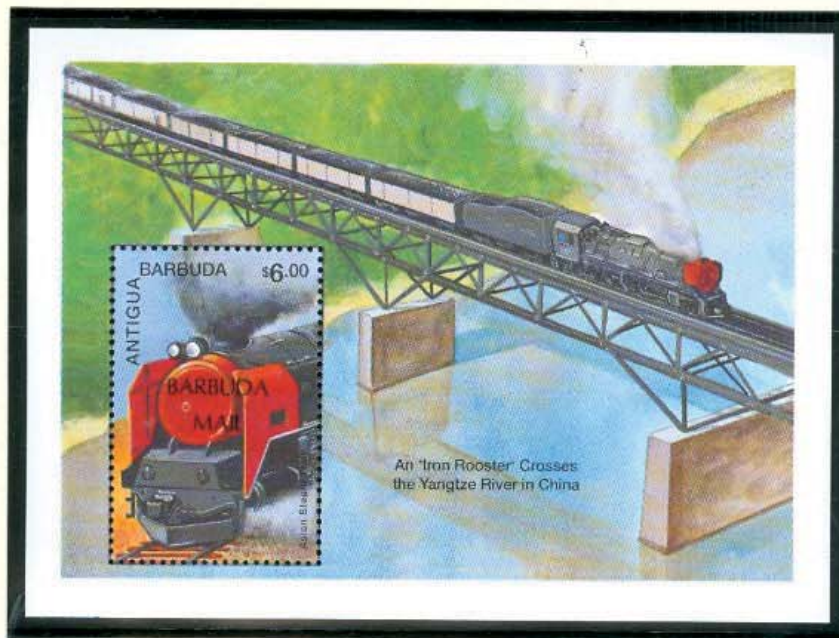
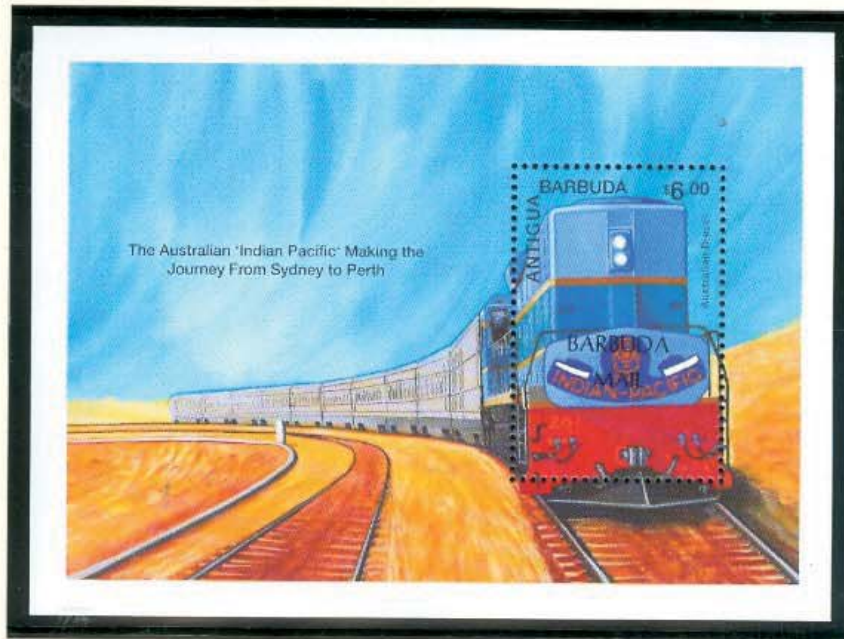


1997





1997





1997



1622 SS

1624-5 SS

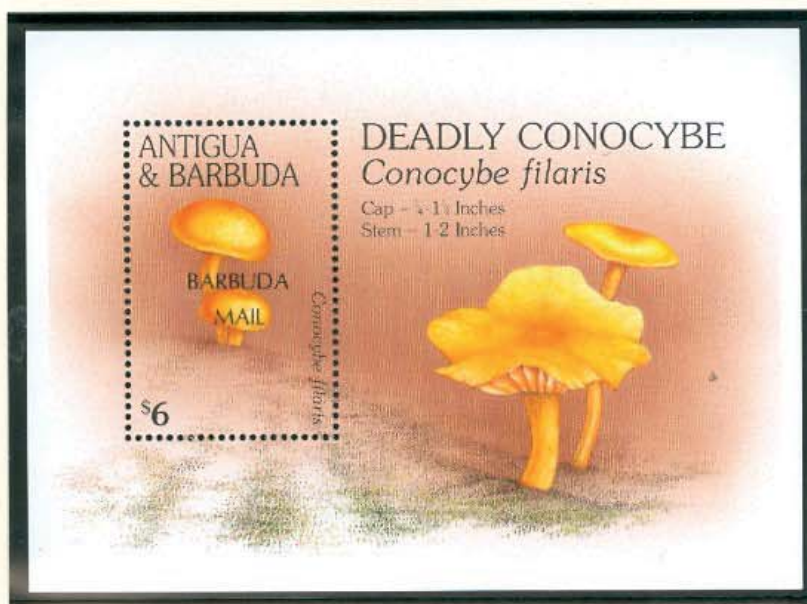


1997





1997



1629a-f

1629g-h 52



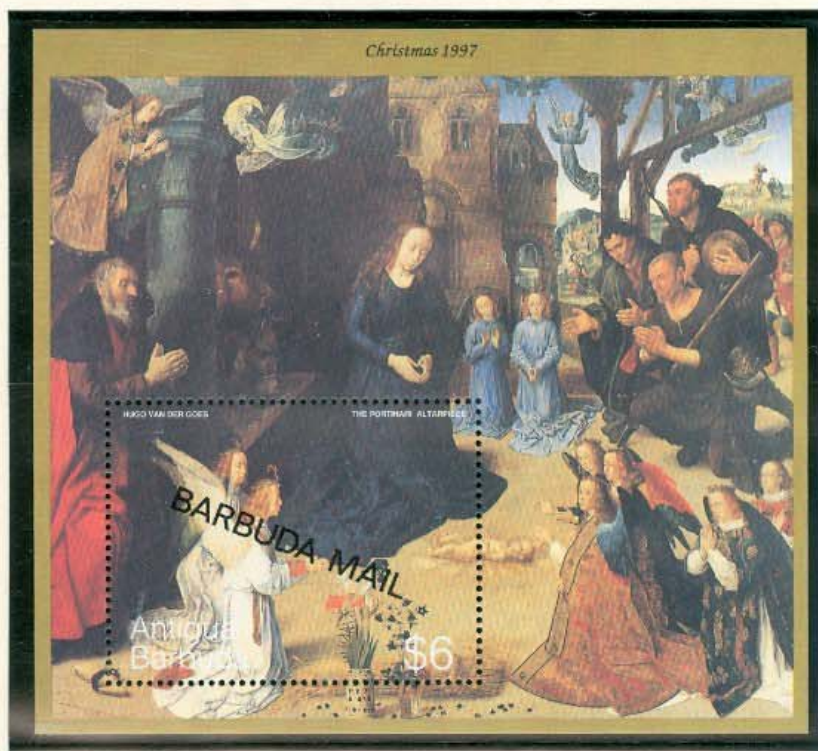
1997





1997

Christmas 1997



Christmas 1997





1997





1997





1997





1997



1945-1995 50th Anniversary Of the end of World War II

The final days . . .





1997





1997

## H.M. QUEEN ELIZABETH THE QUEEN MOTHER



THE LADY OF THE CENTURY

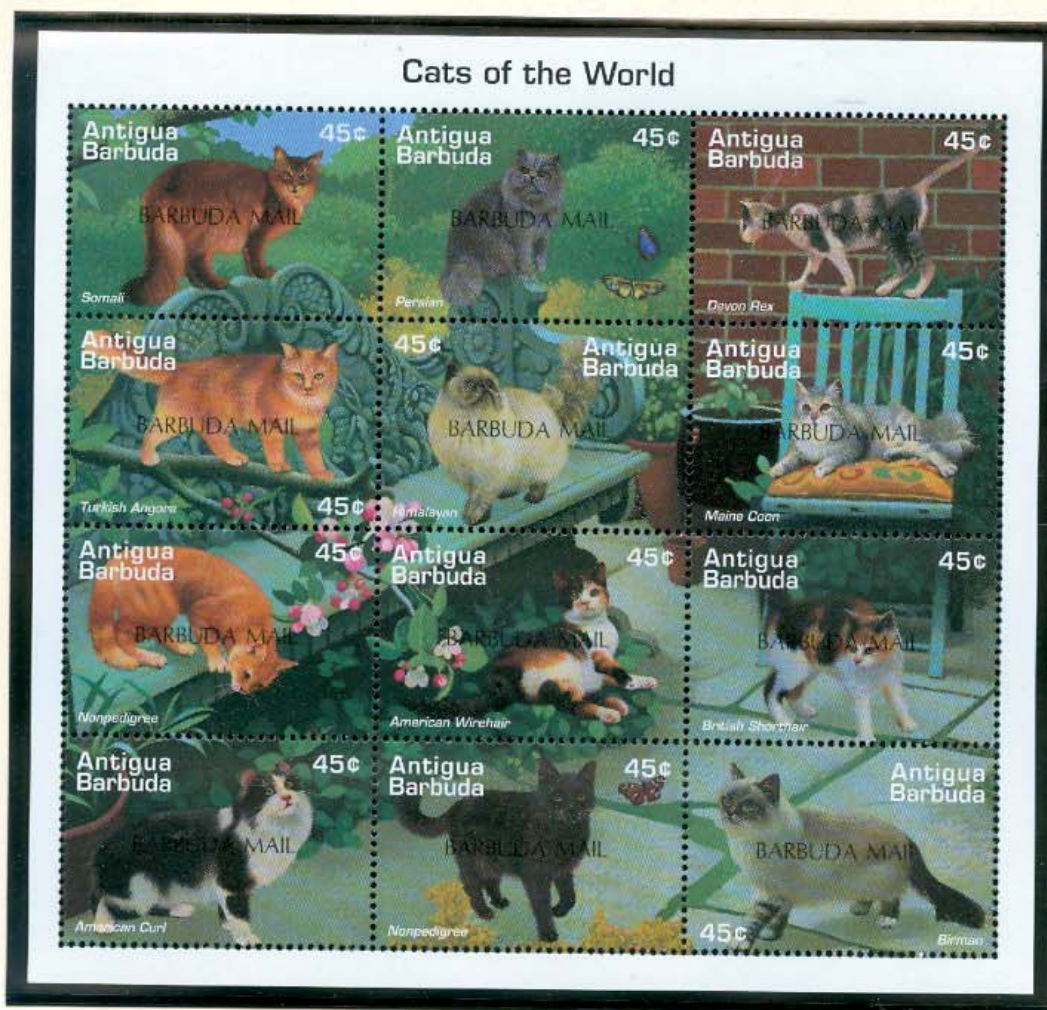


1997





1997



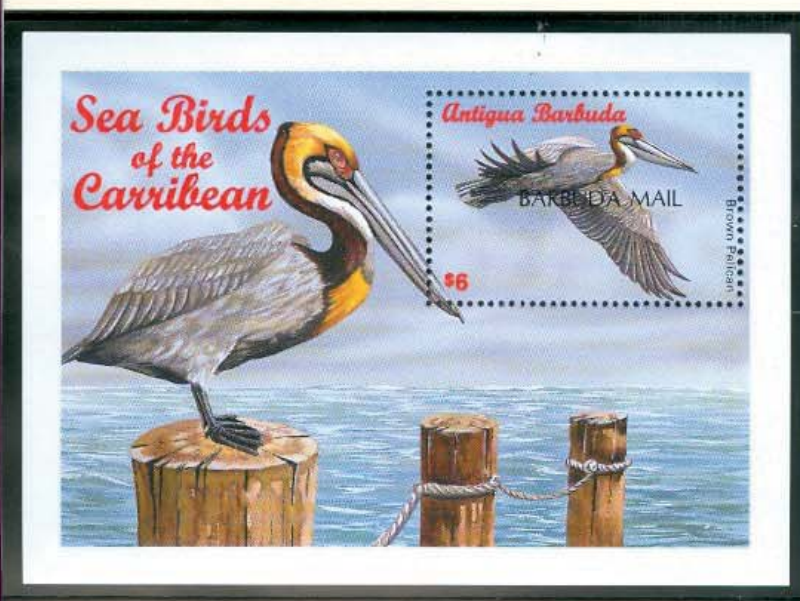


1997





1998





1998

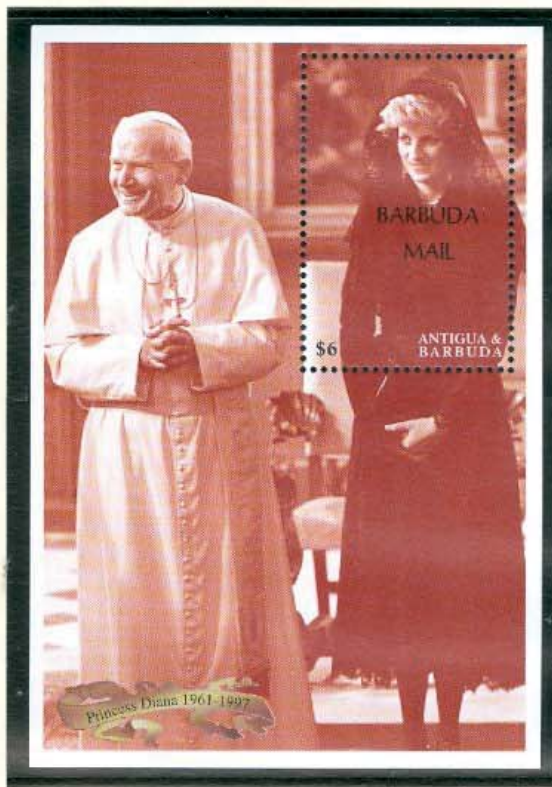


1663 SS

1664-6 SS



1998





1998

# ANTIGUA & BARBUDA Salutes BROADWAY







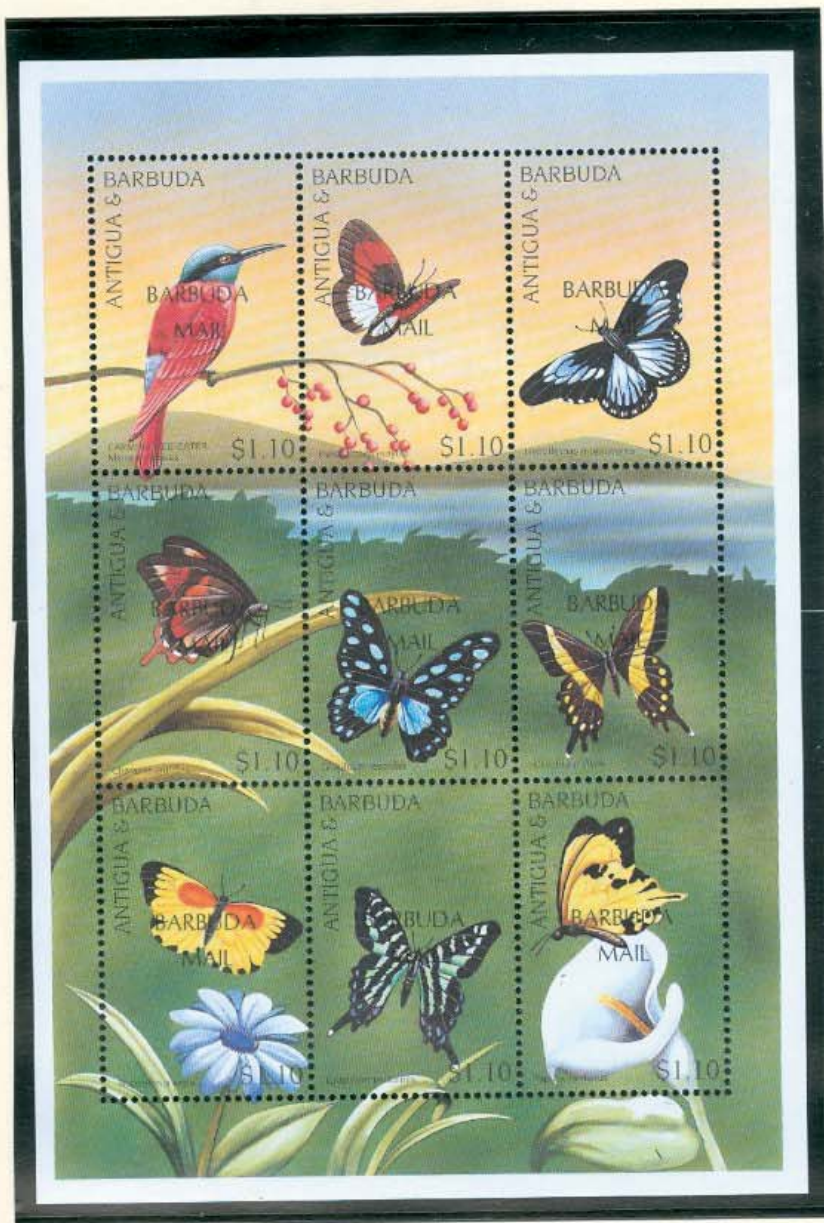


1998





1998



167652





1998

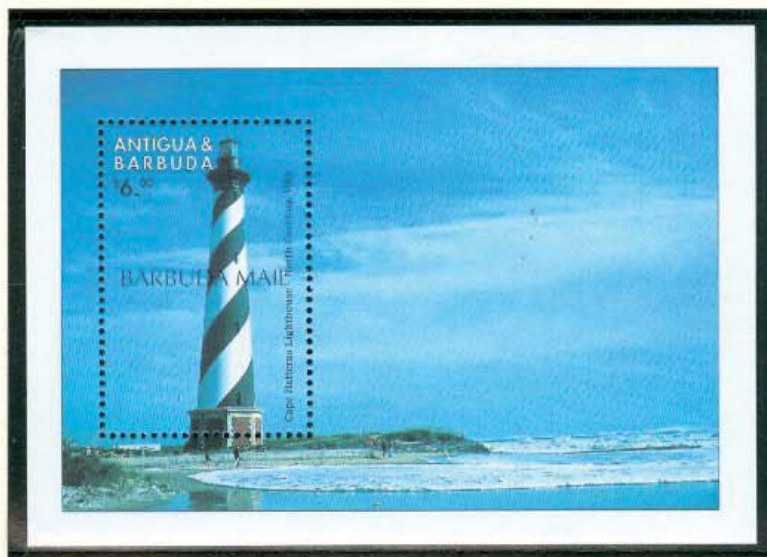




1998



1682



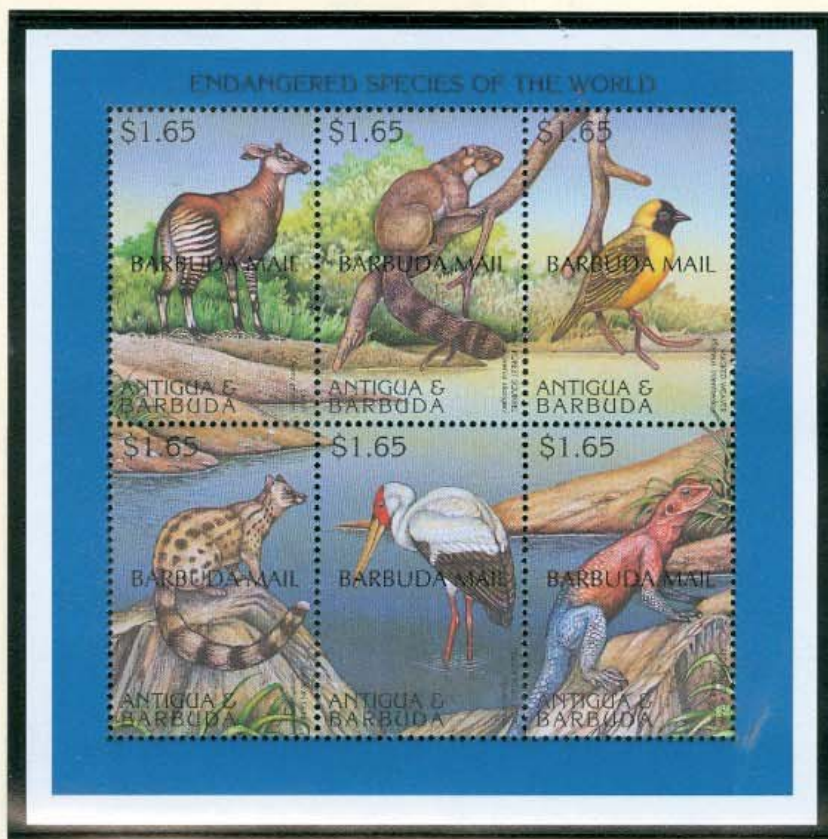
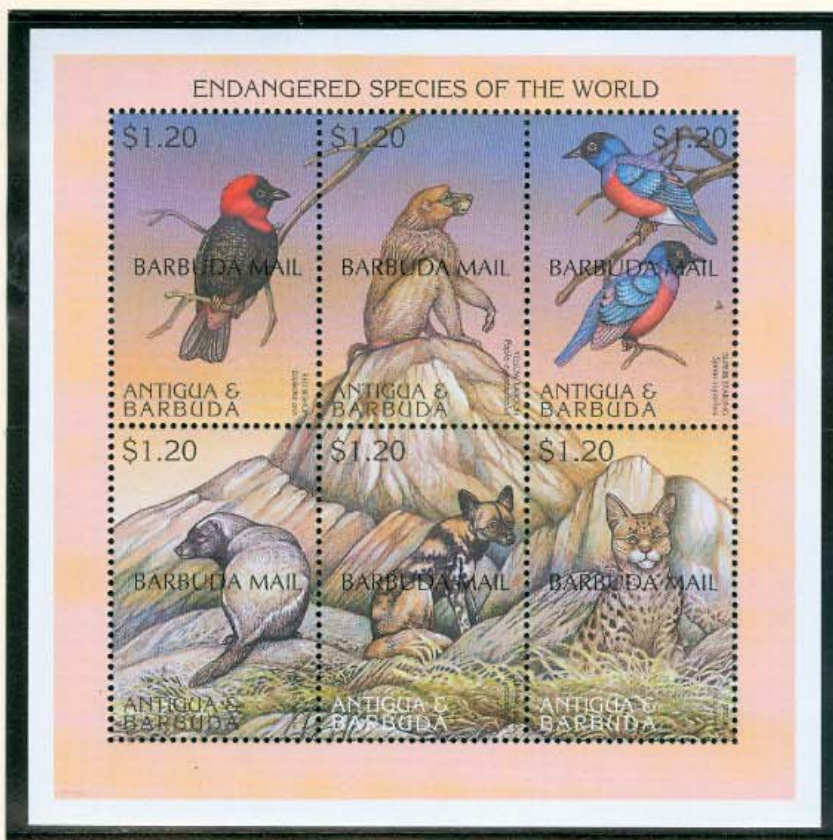


1998



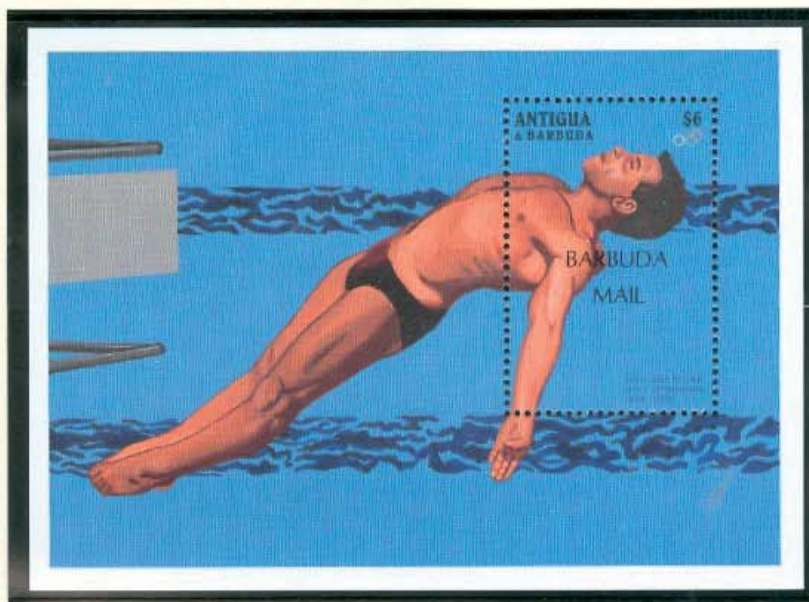
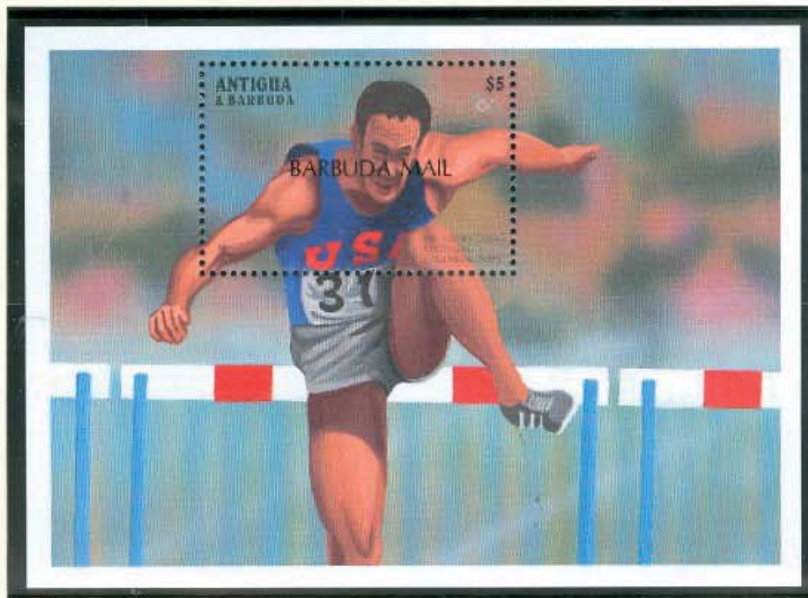


1998



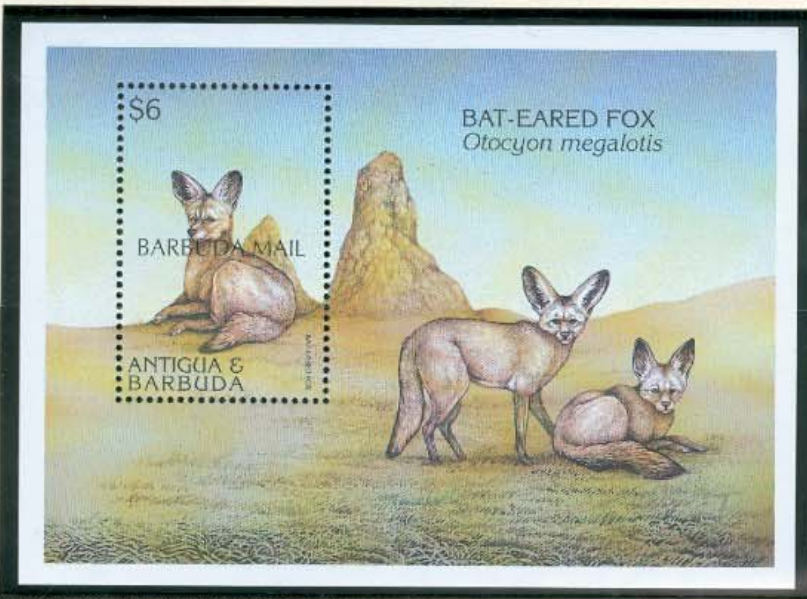


1998



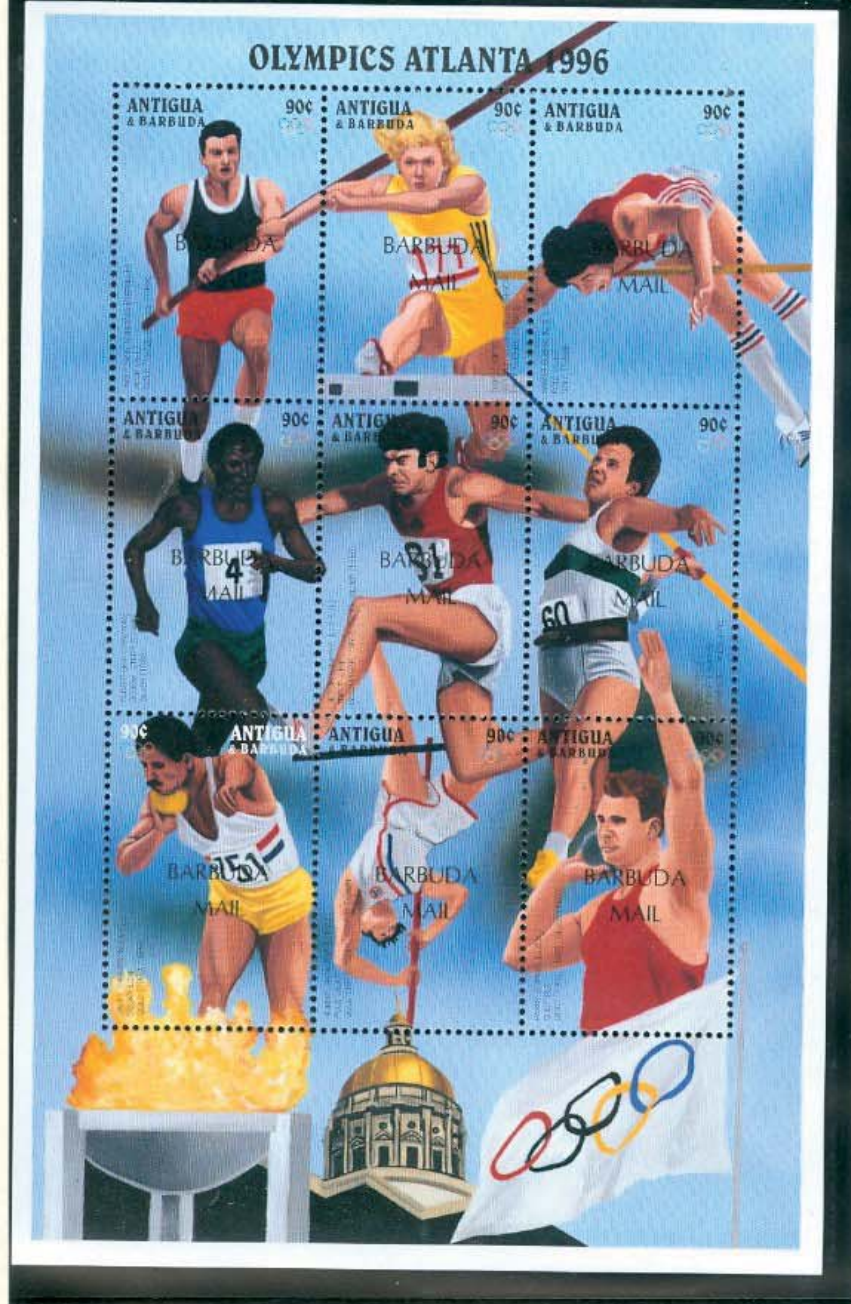


1998



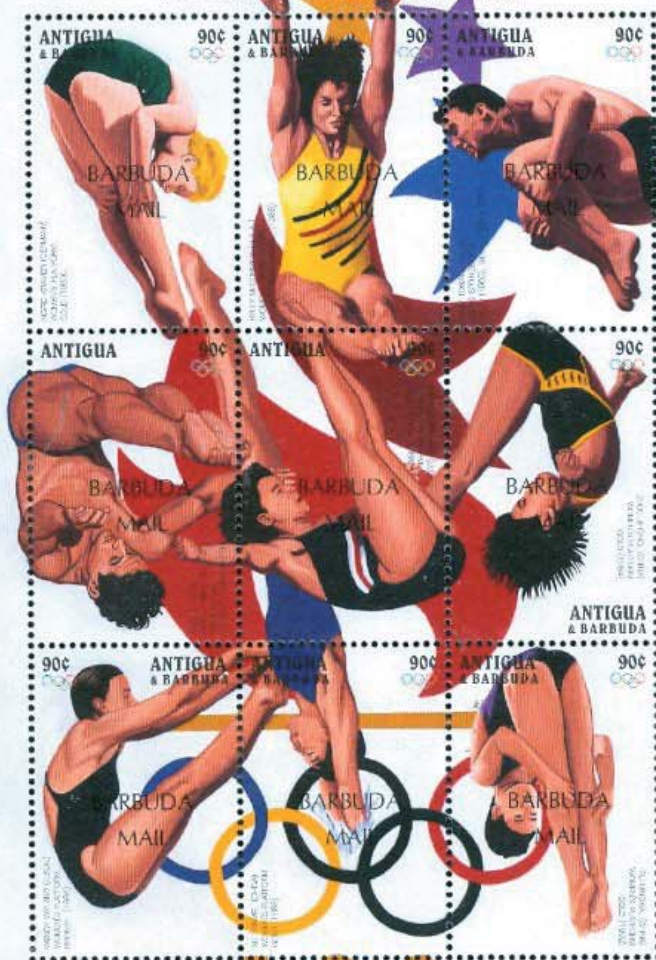


**OLYMPICS ATLANTA 1996**





## OLYMPICS ATLANTA 1996



100



1998





1998





1998





1998

# WORLD CUP '98



## TOP TOURNAMENT SCORERS



1998



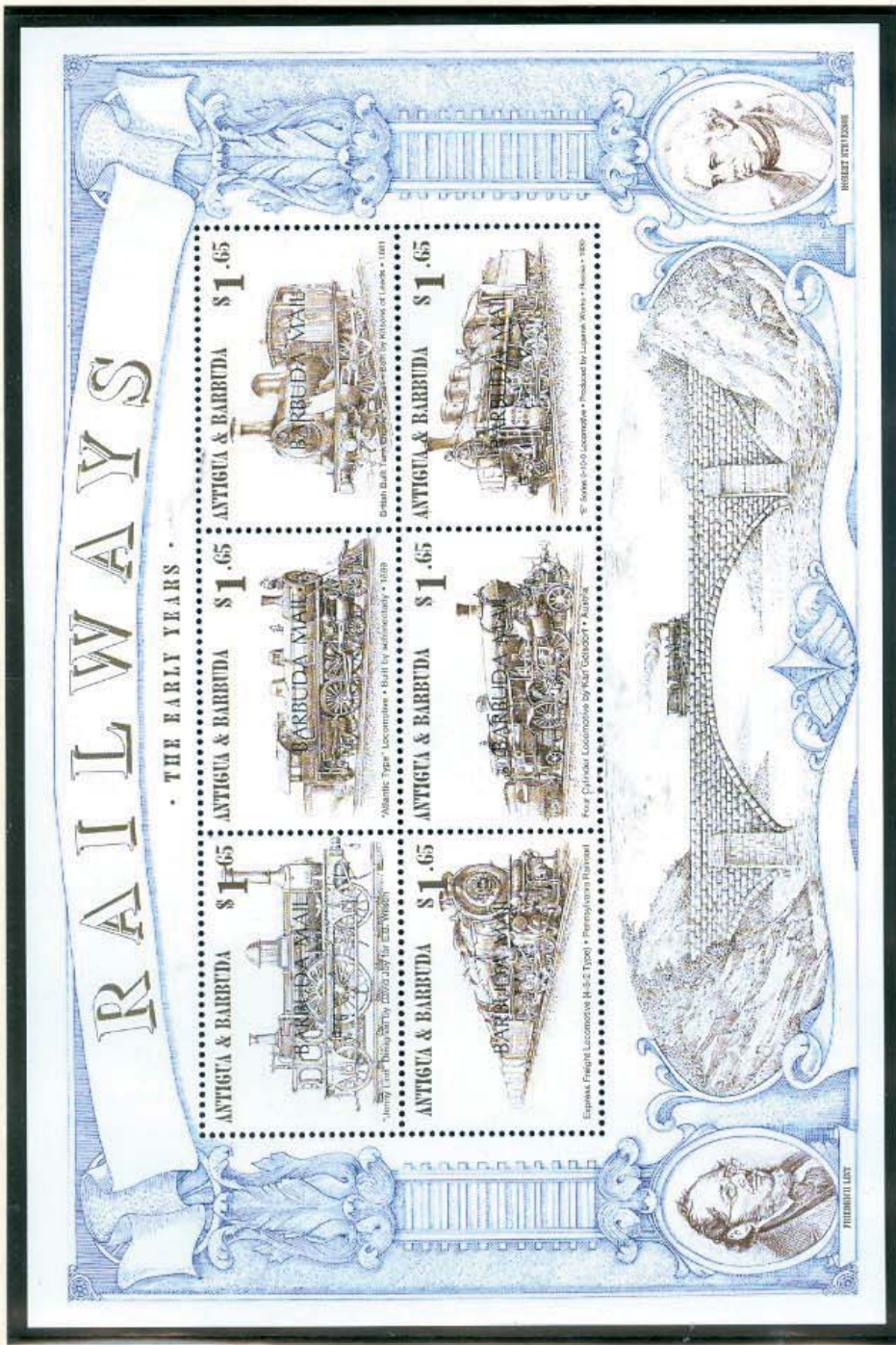


1999



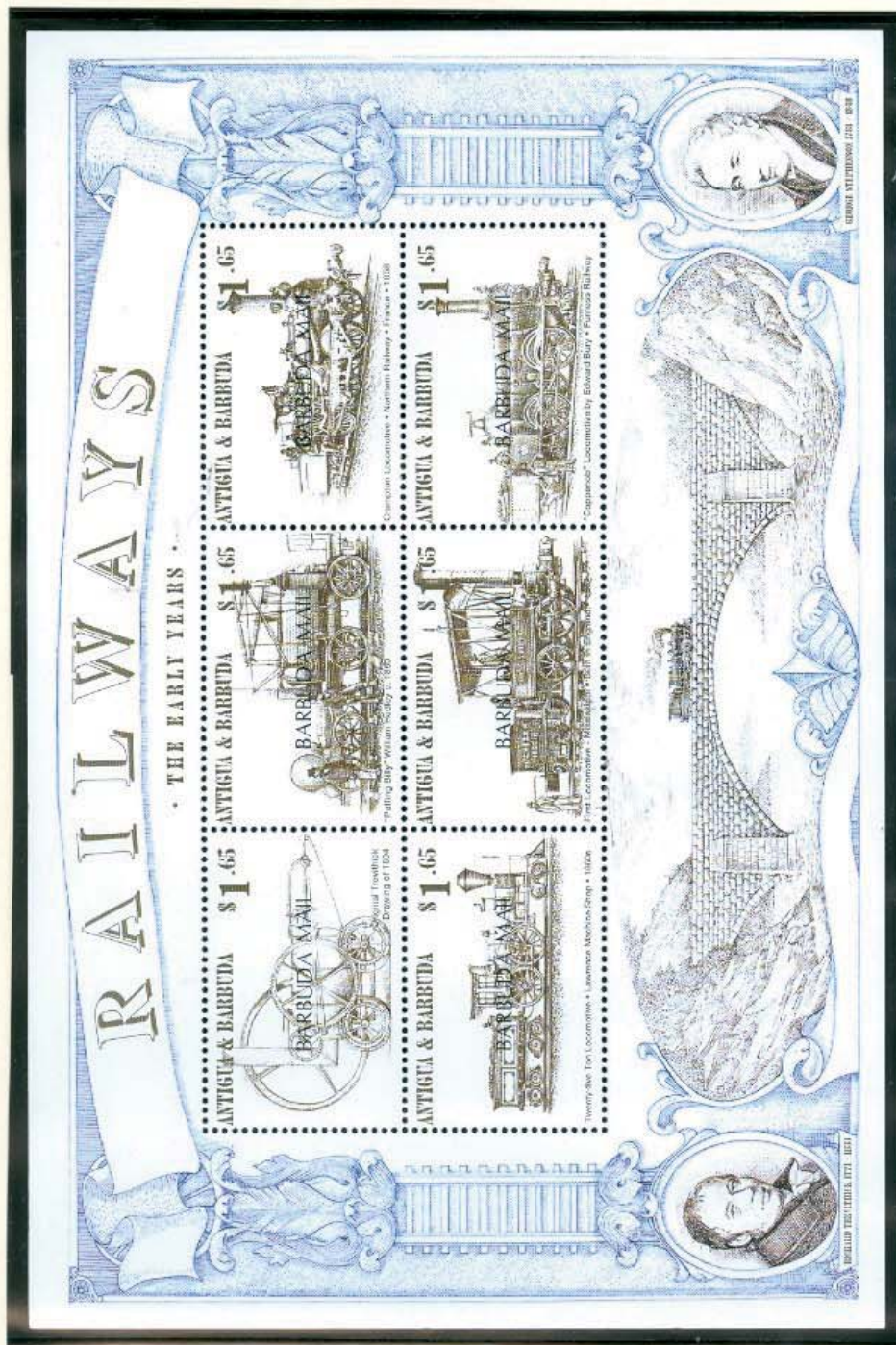


1999





1732-3 SS



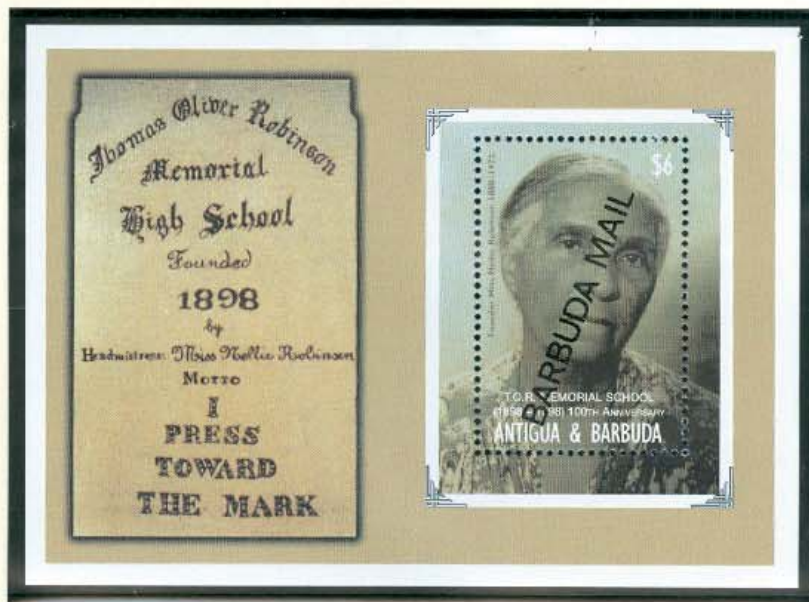


1999



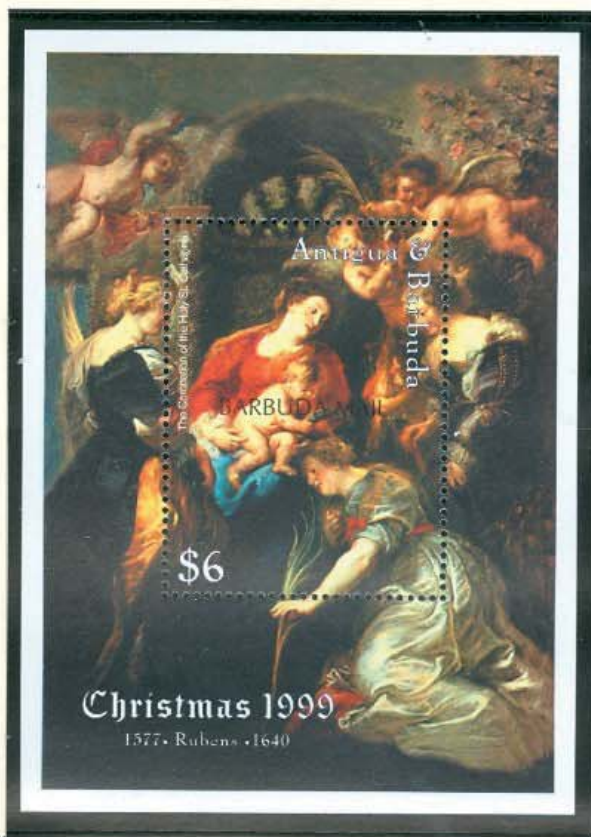


1999





1999





1999





1999





1999

# ORCHIDS OF THE WORLD



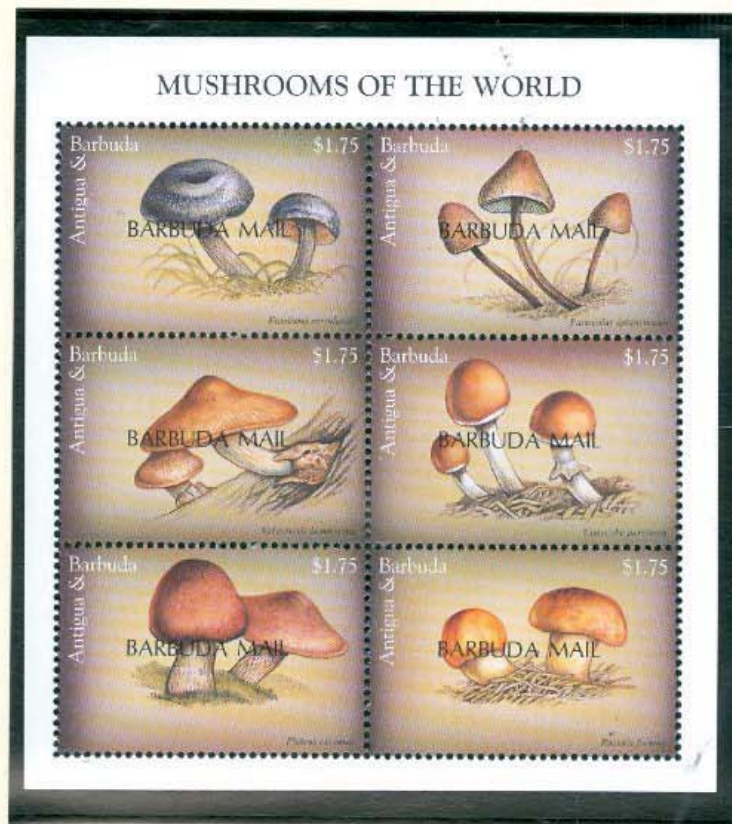
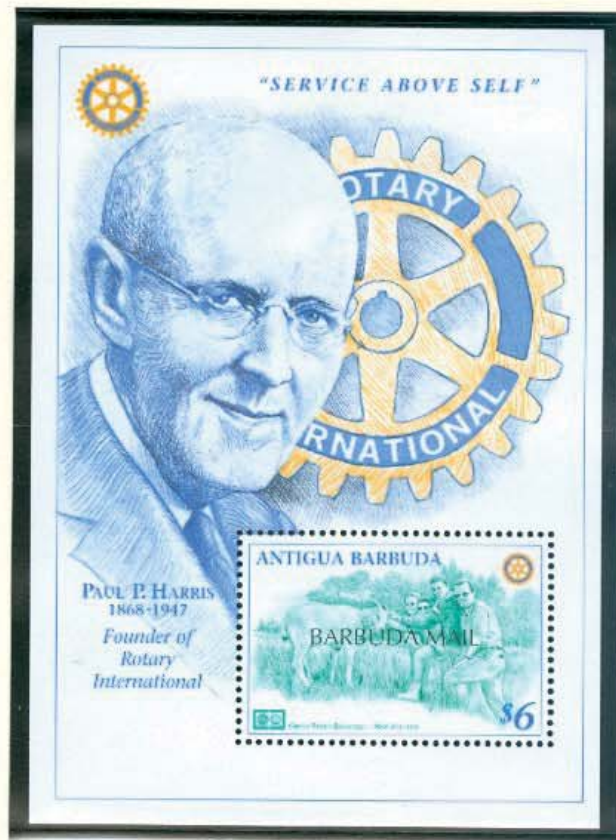
1708-13

1714 SS



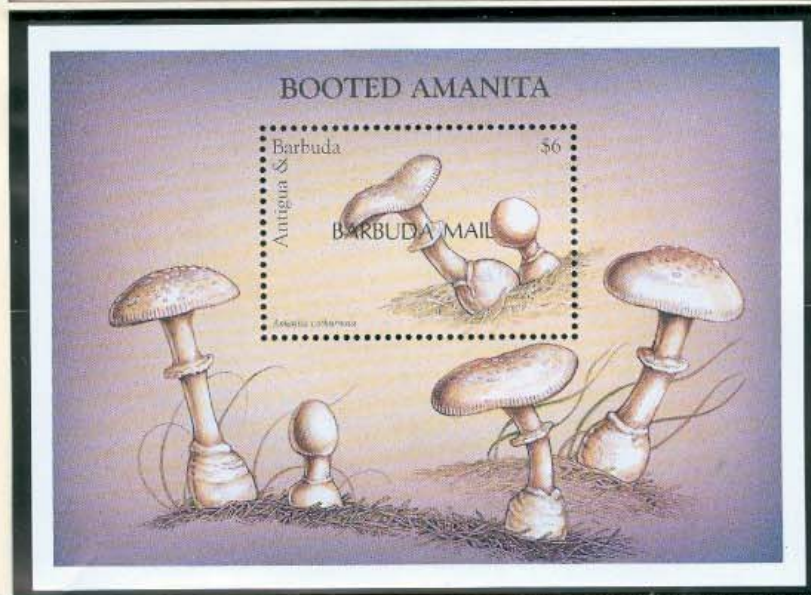
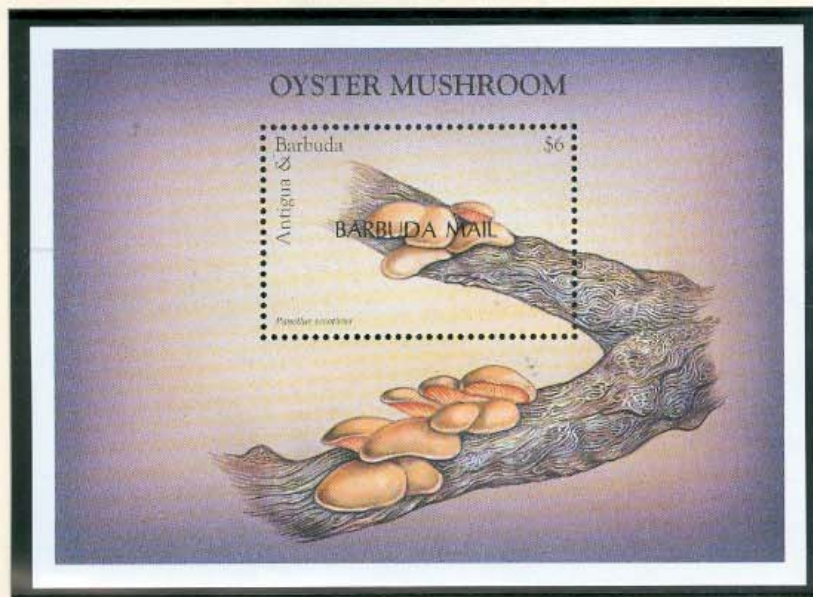


1999





1999





1999





1999





1999





2000



# DOMESTIC ANIMALS PUPPIES



# DOMESTIC ANIMALS KITTENS





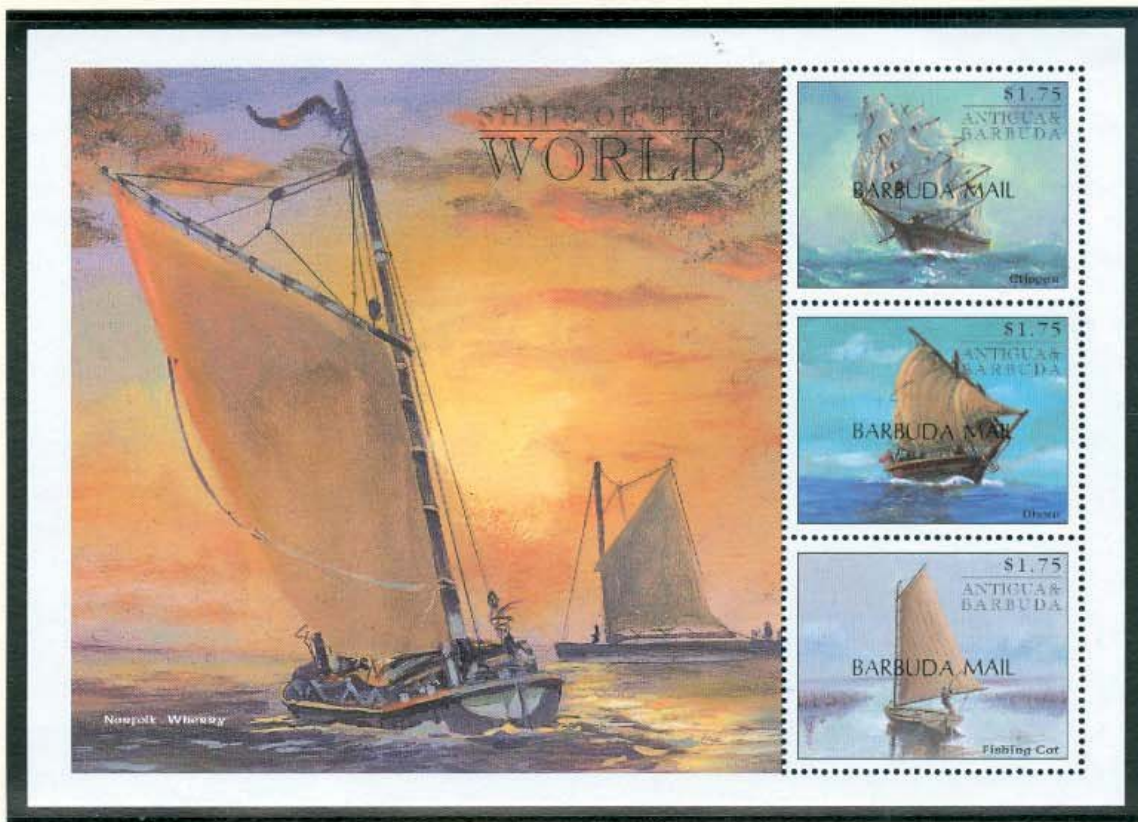
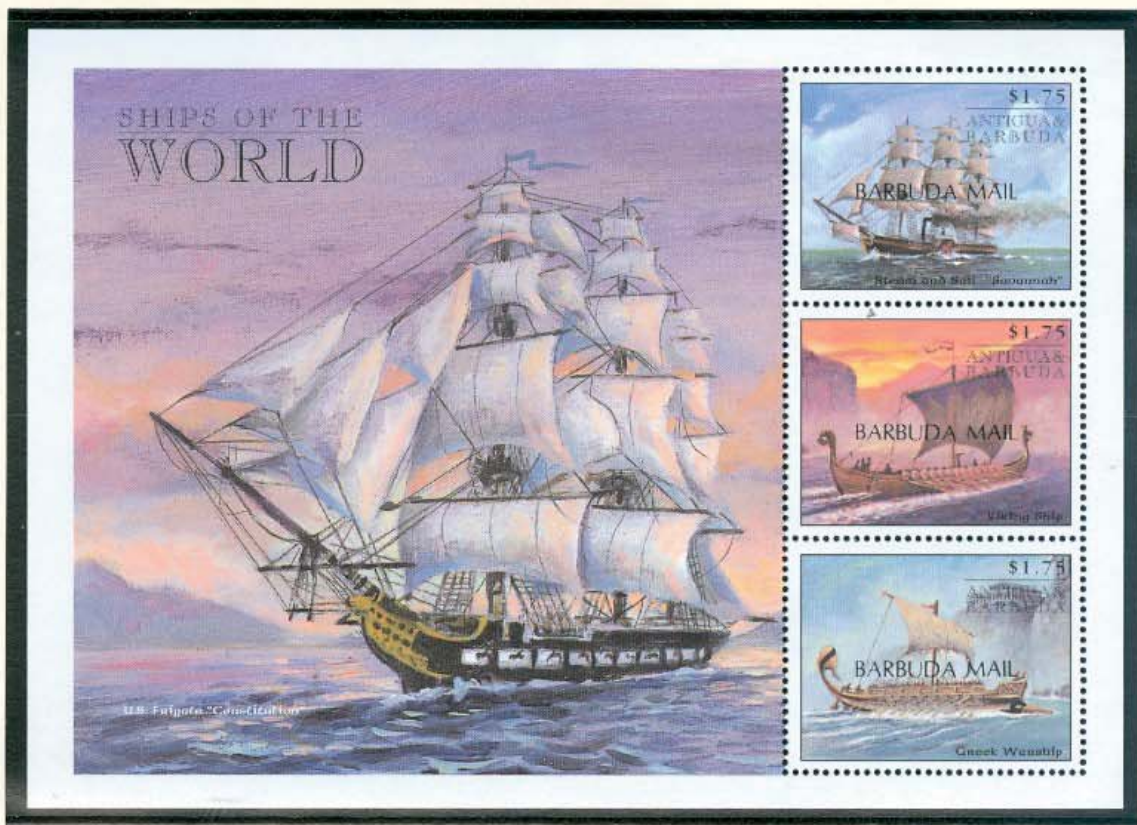
2000



1759-64, 1765-85



2000



1771-3 55



2000

# ANTIQUE AUTOMOBILES

\$1.65

ANTIGUA & BARBUDA



TORPEDO 1911

\$1.65

ANTIGUA & BARBUDA



MERCEDES 22 1915

\$1.65

ANTIGUA & BARBUDA



ROVER 1920

\$1.65

ANTIGUA & BARBUDA



MERCEDES-BENZ 1936

\$1.65

ANTIGUA & BARBUDA



PACKARD V-12 1934

\$1.65

ANTIGUA & BARBUDA



OPEL 1924

# ANTIQUE AUTOMOBILES

\$1.65

ANTIGUA & BARBUDA



FORD 1899

\$1.65

ANTIGUA & BARBUDA



FORD A 1909

\$1.65

ANTIGUA & BARBUDA



FORD T 1928

\$1.65

ANTIGUA & BARBUDA



FORD T 1922

\$1.65

ANTIGUA & BARBUDA



FORD BLACKHAWK 1929

\$1.65

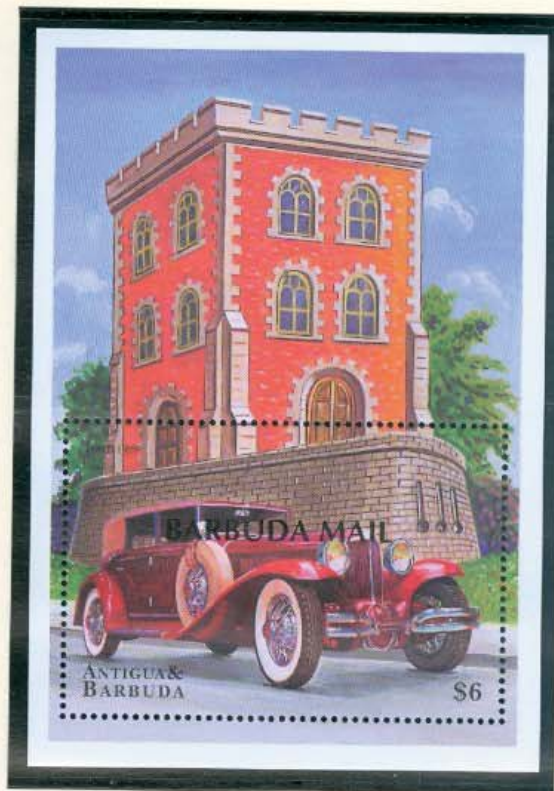
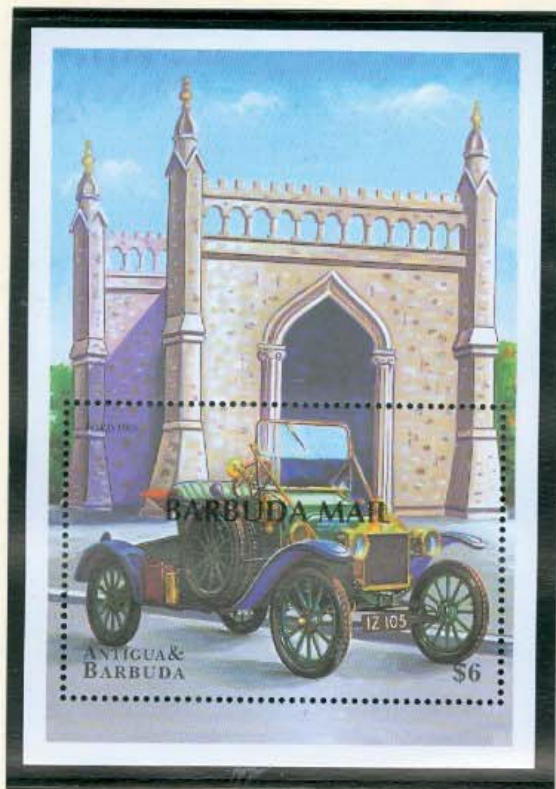
ANTIGUA & BARBUDA



FORD SEDAN 1931



2000



1778-80



2000

# AIRCRAFT TOWARDS 2000



1. NASA Space Shuttle  
Underside glowing red hot following re-entry.
2. SAA3 'Gripen'  
Advanced Technology Fighter entering  
service in Swedish Air Force.
3. Eurofighter EF2000  
ATF due to enter service in Europe in 2002.

4. Sukhoi SU 27  
Principal Russian Fighter into 21st Century.  
Painted in 1998 livery of 'Russian Knights'  
Aerobatic Display Team.
5. Northrop B 2  
Strategic 'stealth' bomber USAF.
6. Lockheed F-117 'Nighthawk'  
Tactical 'stealth' strike aircraft USAF.





2000

# AIRCRAFT TOWARDS 2000



1. Lockheed-Boeing General Dynamics YF-22  
Advanced Technology Fighter (ATF)  
selected to replace F-15 USAF
2. Dassault-Breguet Rafale BO 1  
Two-seat variant of Rafale ATF Multi-role  
strike and air defense French Air Force
3. MiG 29  
Advanced Technology Fighter (ATF) Russian  
Armed Forces

4. Dassault-Breguet Mirage 2000D  
Multi Role strike aircraft French Air Force
5. Rockwell B-1B Lancer  
Low-level Strategic Bomber USAF
6. McDonnell-Douglas C-17A  
Heavy lift strategic transport USAF

